



# The Congregation Mishkan Israel

*More than a place. We're a community.*

NOVEMBER/DECEMBER 2021

Series 106 Number 2



## *Creating Miracles as a Community*

*by Rabbi Brian P. Immerman*

A favorite bedtime story in our home tells the story of “Little Red Ruthie,” who encounters a wolf on the way to her grandmother’s house where she is making latkes. The wolf, who wants to eat her, decides instead to wait until after Ruthie eats the latkes so she will be a better meal.

Throughout the story, little Red Ruthie summons the courage of the Maccabees in order to confront the wolf. While the candles, latkes, presents and jelly doughnuts are often the focus of our holiday, today we might also want to channel the courage of the Maccabees.

This winter will hopefully be significantly better than last, with most of us vaccinated and the rates of COVID (at least as I am writing this) beginning to fall again. There is so much hope on the horizon. After tremendous High Holy Days, we are again repopulating our calendar with CMI traditions, old and new – the Torch Run, Mitzvah Mall, and lighting our giant outdoor Chanukiah generously created by our Brotherhood of Men and Women. We have been safely worshiping indoors for months and hope that we can have even more people for our annual Dr. Martin Luther King Jr. service. Finally, after 18 months, the sounds of children laughing and learning have filled the halls of CMI once again!

With all of the excitement, we know that there are still many obstacles that we face as individuals and as a society. Unemployment is still very high, COVID has exacerbated income inequality, our planet is warming at a rapid pace, and more. We also may be facing additional challenges such as the loss of friends or family, the struggles from our months of isolation, or simply the darkness that looms over us as our daylight grows shorter each day. By choosing to confront the Greeks, the Maccabees taught us that we can all be a source of light and can collectively summon courage. Most importantly, they taught us that when we work together to overcome challenges we are never alone.

While we will always pray for miracles, such as oil lasting longer than it should, the lesson from Chanukah is that we don’t need to wait for a miracle to occur, we can create miracles for ourselves and others. If we work hard, our collective light will last forever. May we all find courage, comfort, health and hope on our journey together.



## MEMBERSHIP CORNER WELCOME TO NEW MEMBERS

The Congregation extends a warm welcome to new members:

Joshua Groffman & Rebecca Van Tassell and children, Henry & Esther, Gary & Sharon Hochman, Ilana & Rick Miani and children, Zachary & Emily, Aaron Pine and children, Alexandra & Zachariah, Benjamin & Emily Schimelman and children, Laila & Gabriel, Erica Spatz & Jeffrey Turner and children, Julie, Owen & Jill Wurcel

## TODAH RABAH SHABBAT WELCOME TEAM

Thank you to our greeters:

### September

- 3 Dave Rodnick & Phil Jacobs
- 10 Karen Kimball & Bob Nobleman
- 17 Karen Kimball
- 24 Karen Kimball
- 26 Karen Kimball
- 28 Patricia Vener-Saavedra

### October

- 1 Dave Rodnick & Phil Jacobs
- 8 True & Cliff Wolff
- 15 Ivey Cooley
- 21 Karen Kimball  
Howard Lurie  
Leah Glaser
- 22 Alan Sturtz
- 29 Richard Shaw

For more information about our Team of greeters, contact co-chairs Karen Kimball at [kjkimball@sbcglobal.net](mailto:kjkimball@sbcglobal.net)

## THANK YOU

Our High Holy Day worship would not have been possible without the many people who participated in the services and gave generously of their time.

Thank you to:

**Sarah Greenblatt, Tamara Epstein &**

**Sarah Legassey** for coordinating and organizing the High Holy Day logistics.

**Aaron Singer, Levi York & Corey Stone** for beautifully chanting Torah.

**Julia Schroers, Michael Allen & Matthew Lupoli** for reading Haftara.

**David Schaefer, Michael Dimenstein, Mark Sklarz, Joan Lakin & Sarah Greenblatt** for holding the Torahs on Kol Nidre.

**Professor Shelly Kagan** for leading a text study group.  
**Stan Friedman** for organizing the Reflection Service.

**Rabbi Brockman** for offering words of comfort and blessing to our community.

**Dr. Kevin Mack** for your beautiful organ music.

**David Chevan & the Afro Semitic Experience** for the spirited music during our Contemporary Rosh Hashanah Service.

**Chad Emerson** for setting up the video and audio equipment.

**Ben Epstein & Michelle Goldstein** for running Zoom & monitoring Livestream.

**Mariusz Skula** – Cellist

**Louise Fateauz** – Soprano

**Pamela Frigo Johnson** – Alto

**Gene Stenger** – Tenor

**Dylan Armstrong** – Bass

**Lina Giglio** – Guest soloist

**Richard Shaw & Karen Kimball** for their reading a prayer for the congregation.

We would also like to thank the following greeters for their time and energy throughout the High Holidays.

Michael Allen, Peter Alpert, Dana Astmann, David Astrahcan, Tamar Braverman, Dana Brozinsky, Kim Braun Cohen, David Chevan, Julie Chevan, Ivey Cooley, Sarah Greenblatt, Rob Homer, Phil Jacobs, Karen Kimball, Howard Lurie, Sue McDonald, Ellen Nasper, Dave Rodnick, Diane Rosen, Fred Rosen, David Silverstone, Ana Sirota, Marie Shaw, Richard Shaw, Mark Sklarz, Sue Wildes.



## CANTOR'S NOTES

### Cantor Arthur Giglio

A semblance of normalcy is returning to CMI. Since September, we have been back in the sanctuary having services, and I am again teaching my B'mitzvah students in person. We are back inside the building; the CMI Community has returned! COVID has proved to be much more of an ongoing challenge to all of us and our families, but like everything else in life, this too shall pass. Not only will it pass, but it will make us so much stronger. It is amazing how much you realize you need something when it is taken away. Little things like meeting my students in person and being able to come to my office seem so huge to me now. We get caught up in the madness of the everyday pressures of life, so when it comes to a grinding halt, we suddenly are faced with a new reality, a new perspective. It is sad that it takes something as terrible as a pandemic to start to value all that is around us, all the miracles that have blessed us - but that is a silver lining to this terrible event. We had the time to sit back and touch our spiritual selves and realize that something as simple and wonderful as sitting peacefully in our sanctuary can be so wondrous! The CMI community is again worshipping together in our magnificent and very spiritual space. Religious School has returned, children are running down our magnificent halls and we can bring in our chanukiahs and light the Chanukah candles together again!

Rabbi Nachman of Breslov points out; every day of Chanukah we add a new candle to the chanukiah, yet we also rekindle the candles of the preceding days. In this way we include and remember our past even as we move towards the future. In other words, "Our future lies in our past." For all of us, we cannot move away fast enough from the recent past, but it will forever reshape our future. Do you wonder, like I do, what life would have been like if this pandemic had never occurred? How many hundreds of

*Continued on page 4...*



## PRESIDENT'S MESSAGE

### Michael Dimenstein

This year, as with all other Jewish festivals, Chanukah appears early on our secular calendar. Just as we conclude the Thanksgiving holiday weekend, we begin to kindle the first Chanukah lights. Although the winter solstice is nearly a month away, the shortened periods of daylight have already descended. The radiance of glowing candles in the menorah offers a welcome break from the shadows of evening that have come to shorten our day too soon.

The legendary story of Chanukah, our eight-day festival of lights, recalls the miracle of enduring light that would illuminate and liberate a people whose culture, religion and customs were suppressed and forbidden. While there is certainly more to the back story, including martyrdom and guerilla warfare, it's the miracle of light that has powered Chanukah's celebration in modern times. I am reminded of another Chanukah miracle told in a 20th Century short story by Nobel laureate, Isaac Bashevis Singer, who fled Poland four years before the Nazi invasion, and became a prominent international figure in the Yiddish literary movement.

Singer wrote about a young man and young woman who discover that they are among the very few to have escaped the ruins of the Warsaw ghetto following its destruction by Nazi bombs. Amid this unfathomable darkness, the man was able to salvage a single candle and some matches. He remembered that it was the beginning of Chanukah, and together with his companion, lit the candle and recited the Hebrew blessings recounting the miracle of light. The couple delighted in the splendor of the warm glimmer. They interpret the tranquility and brilliance of the solitary candle as a symbol of hope that would inspire them to persevere and overcome extraordinary

*Continued on page 4...*



CANTOR'S NOTES *continued...*

thousands of lives would have been saved? How our present and our future would have been different? The poignant words of Rabbi Nachman of Breslov really resonate for me. The past is the light that guides us to our future and the flicker of Chanukah lights recall those memories, good or bad. Despite all the things that could have or should have happened in our lives, every one of us here today are blessed, very blessed!

Speaking of Blessings, celebrate Chanukah with us on Friday, December 3rd. Bring your favorite chanukiah so we can light the candles, sing songs and praise God for letting us be together. December brings us another blessing with the return of David Chevan and the Nu Haven Kepelye on Saturday, December 25th. Join us as we return to our tradition of a few hours of unmitigated joy with the tunes of Klezmerim and maybe some Yiddish too! Come to kvell, dance in the aisles, clap and shout with joy because the Kepelye will lift you out of your seats like never before. Watch the CMI announcements for the exact time!

## IS SOMEONE IN THE HOSPITAL?

If you know of a congregant who is in the hospital and would appreciate a call or visit, please contact Rabbi Immerman's office at (203) 288-3877 or [rabbi@cmihamden.org](mailto:rabbi@cmihamden.org).

## PROTOCOL FOR MI SHEBERACH (HEALING PRAYER) LIST

To add or delete a name to our Mi Sheberach (healing prayer) list that is read at services, please call Rabbi Immerman's office at (203) 288-3877. You must have permission from the individual to have their name read in public. (There is always the Hebrew option as well.) Names will remain on the list for one month, unless renewed or requested to be deleted.

## PRESIDENT'S MESSAGE

*continued...*

obstacles. Together, encouraged by the powerful Chanukah light the couple made a treacherous journey that took them through the ruins, around barbed wire, past armed guards, through sewers, forests, farms and onto a boat that ultimately took them to their new home in pre-state Israel.

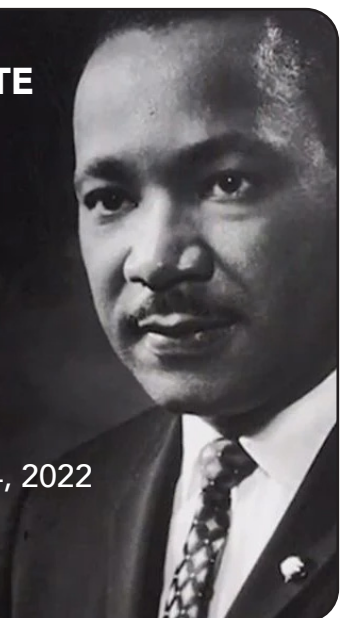
This allegory of the Holocaust belies the horrors of history's darkest time, but it does present us with an opportunity to consider how we might find powerful light in the turbulence of our world. Our lives have been challenged by more than a year of a global pandemic, exacerbated by more infectious variant strains. We encounter the threats and effects of climate change on an almost daily basis. We witness the incidents of divisive politics and hate that give rise to incidents of racial inequity, anti-Semitism, and injustice. Yet, every day we see so many indications of powerful light in our world and in our CMI congregation. Our commitment to the Jewish value of tikkun olam—repairing the world is strong. We are a community that thrives through its connections amongst ourselves, with those who share our values, and those who need our support.

May you find the blessing of powerful light this Chanukah season. Chag sameach!

**SAVE THE DATE**

**ANNUAL  
MLK  
SERVICE**

Friday, January 14, 2022  
7:00 p.m.



## SOCIAL ACTION NEWS

### Jewish Community Alliance for Refugee Resettlement (JCARR)

by Julie Perlman

If, like me, the horror of recent events in Afghanistan brings to mind the past exodus from ravaged countries like Syria, you may wonder what you can do. How can you have hope? How can you give it to others, especially in this season of teshuvah? CMI has an answer: JCARR – the Jewish Community Alliance for Refugee Resettlement.

Through our activities with JCARR, my sons and I have had the opportunity to feel we are making at least a tiny difference in the lives of people in an hour of real need. JCARR is a partnership of six New Haven area synagogues and the Jewish Federation of Greater New Haven. As a co-sponsor for the Integrated Refugee and Immigration Services (IRIS) they help refugee and immigrant families acclimate and adapt to life in their new community in the Greater New Haven area. CMI members are involved through tutoring in ESL, transportation, healthcare, housing, legal work, social services coordination, identifying educational and extracurricular activities for the nine children who have come thus far, and numerous other ongoing tasks. In addition, they have made monetary and household contributions that have enabled JCARR to continue its important work. Our wonderful rabbis have been extremely involved and supportive since the beginning and CMI's Brotherhood of Men and Women have made generous financial donations.

Since 2015, JCARR's coordinator and numerous volunteers have welcomed one asylum seeking and five refugee families who fled their home countries to escape persecution and violence.

JCARR's sixth family arrived on August 24 and we are excited to engage once again in the intense resettlement process.

You, too, can help. If you would like to help make a small but mighty difference in the lives of people in need of a helping hand, please contact me for more information: Julie Perlman, wyndorf@mac.com

Other CMI contacts:

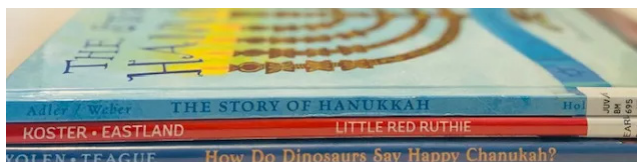
Sue Millen at smillen179@sbcglobal.net

Lina Lawall at lalawall250@gmail.com

True and Cliff Wolff at truefezerwolff@gmail.com

## CONFRONTING RACISM, 2.0

CMI's Confronting Racism Series will start up again in January 2022. Organizers Beth Stenger, Nancy Yedlin, Nancy Moss-Racusin and Karen Baar are developing the program and will invite congregants who registered and/or attended last year's sessions to a meeting in early December to share next steps. Watch for an email in November and an announcement in the CMI News. We're excited to see everyone again and to continue our journey in the coming year!



### CMI BOOK TALK WITH PEOPLE GET READY BOOKSTORE

**Sunday, November 7, 2021**

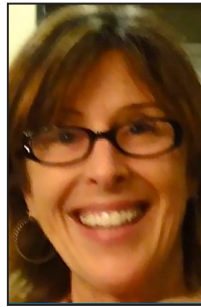
**9:45 a.m. 11:15 a.m.**

The organizers of CMI's Confronting Racism Series are partnering with **People Get Ready (PGR)**, a New Haven-based bookstore and community space to host a Book Talk event on Sunday, November 7 for CMI members just in time for Chanukah gift giving! The Book Talk will be held in the CMI sanctuary and livestreamed for remote attendees. **All in-person attendees must provide proof of vaccination when arriving at CMI.**

PGR owners have special expertise in books for children, youth, and "reluctant" readers that address race, racism and other important diversity, equity, and inclusion topics. PGR will be sharing their book picks for children in different age groups and making reading suggestions for adults looking for resources to help them in discussing race and racism with children.

The PGR website will soon have links to enable attendees to order books online from their bookstore in time for holiday gift giving.

Watch for event updates in the weekly CMI News. For more information, please contact Nancy Yedlin at nyedlin@aol.com.



## NURSERY SCHOOL NEWS

**Susan Witten Nason**  
**Early Childhood Director**

It has been a very busy and wonderful beginning to the new school year!

We have excitedly welcomed back our old friends and warmly greeted many new friends. The teachers worked hard to prepare and had their classrooms ready and love to engage with the children every day!

Every Friday, we enjoy celebrating Shabbat with Rabbi Immerman and Cantor Giglio, where we sing songs and say good bye to another busy week. We are now busy getting ready to celebrate Thanksgiving and Chanukah with many special projects and activities that the children truly enjoy! We also look forward to lighting the Chanukah candles together and singing the usual Chanukah songs.

Enjoy the holiday season with your families!

## CONNECT WITH CMI ONLINE

We offer multiple ways to participate in CMI services and events. Many events include a Zoom option, where you can chat with your friends and see others face-to-face. For security reasons a password is required for Zoom. You can find the password in your weekly CMI news or by calling the office. We also livestream services and events at [cmihamden.org/](http://cmihamden.org/) livestream which offers a view-only experience. There you can also find past services in the archive.

*Please note that if you join via Zoom, your name and picture may appear on the livestream.*

Visit [cmihamden.org](http://cmihamden.org) for the latest information about CMI events, services, links for donations, articles and more! If you do not receive our weekly newsletter and want to subscribe, please contact the CMI office at 203-288-3877.

## MAZEL TOV TO OUR NEWEST B' MITZVAH



**Tal Berkowitz**  
 November 13, 2021  
 Son of Anne Watkins & David Berkowitz



**Victorija Brin**  
 December 4, 2021  
 Daughter of Len & Amy Brin



**Jacob David Fasano**  
 December 11, 2021  
 Son of Emily & Christopher Fasano



**Elijah Jackson**  
 December 18, 2021  
 Son of Scott & Mandi Jackson

## MEMORIAL PLAQUES

Please consider preserving the memory of your loved ones on CMI Memorial Plaques that are displayed in the synagogue. By doing so, they become a special part of our congregation's celebrated history. Individual plaques may be purchased for \$500. If you choose to purchase more than 1 plaque (this includes reserved plaques for future use), each plaque will then cost \$450 each. To order a plaque, please contact Tamara at [tepstein@cmihamden.org](mailto:tepstein@cmihamden.org) or by calling the office at 203-288-3877.



## Chanukah Blessings

The following is the order of Service for each night: (1) light the shamash (the serving candle) (2) recite the Chanukah blessings (3) light the candles (4) recite one of the following readings each day. Place the candles right to left, and light them with the shamash left to right.

### Chanukah Blessings (recited each night)

#### Blessing over the candles:

ברוך אתה יי אלהינו מלך העולם אשר קדשנו במצותיו וצונו להדליק נר של חנוכה.

*Baruch atah, Adonai Eloheinu, Melech haolam, asher kid'shanu b'mitzvotav v'tsivanu l'hadlik ner shel Chanukah.*

Blessed are You, Adonai our God, Sovereign of all, who hallows us with mitzvot, commanding us to kindle the Chanukah lights.



#### Blessing for miracles:

ברוך אתה יי אלהינו מלך העולם שעשה נסים לאבותינו בימים  
ההם בזמן הזה.

*Baruch atah, Adonai Eloheinu, Melech haolam, she-asah nisim laavoteinu v'imoteinu bayamim haheim baz'man hazeh.*

Blessed are You, Adonai our God, Sovereign of all, who performed wondrous deeds for our ancestors in days of old at this season.

### Shecheyanu (Blessing for joy)

*(for first night only)*

ברוך אתה יי אלהינו מלך העולם שהחיינו וקיימנו והגיענו לזמן הזה.

*Baruch atah, Adonai Eloheinu, Melech haolam, shehecheyanu v'kiy'manu v'higianu laz'man hazeh.*

BLESSED are You, Adonai our God, Sovereign of all, for giving us life, for sustaining us, and for enabling us to reach this season.

# November 2021

	1		2	3	4	5	6
			No Hebrew School - Election Day 7:00 p.m. Mussar Class			6:00 p.m. Evening Service	9:00 a.m. Torah Study
7	8	9	4:00 p.m. Hebrew School 7:00 p.m. Mussar Class	10	11	12	13
9:30 a.m. Religious School 9:45 a.m. CMI Book Talk 12:00 p.m. Confirmation and CMI High		4:00 p.m. Hebrew School 7:00 p.m. Mussar Class				6:00 p.m. Family Service	9:00 a.m. Torah Study 10:30 a.m. Morning Service Celebrating the Bar Mitzvah of Tal Berkowitz
14	15	16	4:00 p.m. Hebrew School 7:00 p.m. Mussar Class	17	18	19	20
9:30 a.m. Religious School 12:00 p.m. Confirmation & CMI High 2:00 p.m. 11th & 12th Grade group meet up		4:00 p.m. Hebrew School 7:00 p.m. Mussar Class	7:00 p.m. Executive Committee Meeting			6:00 p.m. Evening Service	9:00 a.m. Torah Study
21	22	23	No Hebrew School	24	25	26	27
9:30 a.m. Religious School 10:00 a.m. Mitzvah Mall 12:00 p.m. Confirmation & CMI High					Office & School Closed - Thanksgiving	Office & School Closed 6:00 p.m. Evening Service	9:00 a.m. Torah Study
28	29	30	4:00 p.m. Hebrew School				
No Religious School Chanukah First Candle							



# December 2021

				1 7:00 p.m. Board Meeting	2	3 6:00 p.m. Chanukah Family Service	4 9:00 a.m. Torah Study 10:30 a.m. Morning Service Celebrating the Bar Mitzvah of Victorija Brin
5 9:15 a.m. Torch Run 9:30 a.m. Religious School Chanukah – 8th day	6	7 4:00 p.m. Hebrew School	8	9	10 6:00 p.m. Evening Service	11 9:00 a.m. Torah Study 10:30 a.m. Morning Service Celebrating the Bar Mitzvah of Jacob David Fasano	
12 9:30 a.m. Religious School 9:30 a.m. 4th & 5th Grade BMitzvah Program 12:00 p.m. Confirmation & CMI High	13 9:00 a.m. Blood Drive	14 4:00 p.m. Hebrew School	15 7:00 p.m. Executive Committee Meeting	16	17 6:00 p.m. Evening Service	18 9:00 a.m. Torah Study 10:30 a.m. Morning Service Celebrating the Bar Mitzvah of Elijah Jackson	
19 9:30 a.m. Religious School 12:00 p.m. Confirmation & CMI High	20	21 No Hebrew School Winter Break	22	23	24 Office & School Closed 6:00 p.m. Evening Service	25 7:00 p.m. December Concert featuring the Nu Haven Kapelye	
26 No Religious School Winter Break	27	28 No Hebrew School Winter Break	29	30	31 6:00 p.m. Evening Service		

# DECEMBER CALENDAR

## 2021-2022 CHAI HOLY DAY CAMPAIGN

Thank you to everybody who made unrestricted gifts this fall! Well over one hundred families responded to David Astrachan's powerful appeal from the bimah at Rosh Hashanah. Your generous unrestricted contributions will allow CMI to address some of the financial challenges our congregation has faced during the pandemic. Together, we have exceeded our goal of \$180,000, set to honor the lives of the many people who have been part of our congregation's 180 year history. We are grateful to every person who has reached deep into their pockets to make sure that CMI will stay strong now and well into the future.

Below are gifts received at the time of press. We look forward to including a more complete list of contributors in the January bulletin. Thank you, and L'Chaim!

### **Chai Circle Donors:**

Anonymous  
Jason & Suzanne Alderman\*\*\*  
Norman & Caron Alderman  
Sandy Allison & Jim Horwitz\*\*  
Michael Allen & Eun-Mi Shim\*\*\*\*  
Peter & Randi Alpert  
Mark & Marian Altman\*\*\*  
The Astmann Family  
Batja Astrachan\*\*  
David & Karen Astrachan\*\*\*\*\*  
Ruthann & David Beckerman  
Karina Berg & Joseph Ross  
David Berkowitz & Anne Watkins  
Dr. Irwin M. Braverman  
The Michael & Tamar Braverman Family  
Stuart & Hedy Bush  
Floyd & Letty Caplan  
Harvey Cheskis  
David & Julie Chevan  
The David & Allison Cohen Family\*  
Scott & Abigail Friedman  
Stanley & Roberta Friedman  
Tamar Gendler & Zoltan Szabo  
Laura Goldblum\*  
John & Frances Gordon  
Sarah B. Greenblatt  
The Hahn Family\*

John & Susan Hoffmann  
Robert Homer & Susan Fishbein  
Rabbi Brian and Jennifer Immerman  
The Koizim Family  
The Alan Lakin Memorial Fund\*\*  
The Ethel & Abe Lapidés Foundation  
Robert & Ruth Lesser  
Jennifer Levin-Tavares  
Sue McDonald & Corey Stone  
Ira & Marsha Moses\*\*\*  
Matthew Nemerson & Marian Chertow  
Susan G. Oberstein  
Madeline Ravich & Scott Gaul  
William & Elaine Ravich  
Lawrence & Betsy Rosenthal  
Michael Ross & Elisabeth Stenger  
Hedda Rubenstein & Michael Dimenstein\*\*\*  
Jeffrey & Alyse Sabina  
David Schaefer & Janet Hall  
Larry Schaefer & Lina Lawall  
Shirley F. Scholder  
Mark & Lynne Schpero  
Carol Schreiber  
Jeremy Schwartz & Tracy Rabin  
Richard & Marie Shaw  
James Shure\*\*\*\*\*  
David Silverstone\*\*  
Aaron Singer and Elizabeth Caspe  
Mark & Judith Sklarz\*\*\*  
The Slattery Family  
David Spiegel & Kathryn Picanso  
Andrew Ullman  
Marc Wallman & Cynthia Carr  
Bert & Martha Weisbart

*\*Torah*

*\*\*Double Chai*

*\*\*\*Double Torah*

*\*\*\*\*Quadruple Torah*

*\*\*\*\*\*Simchah*

### **Additional Gifts:**

Michele Abrams & Dalton King  
Anonymous  
Brenda Arovas  
Antony Astmann  
Dana & Cynthia Astmann  
Zhozefina Averbukh  
Karen Baar  
Irma Bachman  
Allen & Fern Bailis

Estelle Baltimore  
Betsy Barnston  
Larry & Phyllis Bausher  
Alice Baxter  
Peter & Nancy Berdon  
Sylvia Betcher  
Bruce & Tansy Birenbaum  
Elaine Blumenthal  
Lydia Bornick  
Jane Silva Brodie  
Dana Brozinsky & John Keegan  
Robert & Laura Cannon  
Jay & Carol Charkow  
Marvin & Arlene Cohen  
Robert Cole  
Judith Connolly  
Jacob (Jack) Crane  
The Dowgiewicz Family  
Robert & Tamara Epstein  
Deborah Faehnel  
Leonard & Stephanie Farber  
Jack & Harriet Fast  
Lisa Feldman  
Burt & Suzanne Finkel  
Gerald & Marilyn Fishbone  
Eden & Allan Fisher  
Dr. Gerald & Bayle Forman  
Michael & Erika Forte  
Lisa Frankes  
Bernice Giskin  
Leah Glaser & Stephen Amerman  
Albert Burton Glassman  
Saul & Sonya Goldberg  
Andrew Graham  
Neil & Marlene Greenberg  
Alan Hillman & Penny Marcus  
Judith & Robert Jacobson  
Priscilla Jencks  
Dr. Benjamin & Hon. Maria Kahn  
Dr. David Kaminsky  
Tim Kavanagh  
Paulette Kenney  
Matthew & Carrie Kerzner  
Sheila Kerzner  
Ellen Abrams King  
Kelly King  
Alvin Klevorick & Susan Bender  
Carolyn Kone & Allan Rubenstein  
Jerome Korman

Alice & Paul Kosowsky  
Joel & Lucinda Kramer  
Raymond Kubick  
Meir & Barbara Kryger  
Hilary Landorf  
Ellen Landowne  
Jeremy Leven  
Lawrence Levenson  
J. Lance Lichtor  
Philip & Sondra Lublin  
Howard Lurie  
Rob & Robyn Merritt  
Jerome & Roslyn Meyer  
David & Susan Millen  
Leonard & Ellen Milstone  
Marian Montano & Charles Spatz  
Nancy Moss-Racusin  
Charles & Judith Naden  
Robert & Susan Nobleman  
Karen Orzack-Moore & Daniel Moore  
Linda Proscio  
Eleanor Rachleff-Serow  
The Rashba Family  
Peter & Marcy Rathman  
Melissa & Robert Rich  
Joel & Lorraine Roseman  
Diane Rosen  
Susan Rubino  
David & Debra Samuels  
Judy & Harvey Schatten  
Kenneth & Suzanne Seltzer  
Dr. Jerome Max Serling & Mrs. Cecelia Serling  
Susan Skolnick  
Paula Shemitz  
Jeffrey Smith & Edith Rotkopf  
James & Linda Soha  
Rabbi Howard Sommer & Dr. Linda Waldman  
Gennadiy Sorochan  
Lois Spivack  
Rabbi Steve & Caryl Steinberg  
Jeanne Steiner & Will Rosenblatt  
Joseph Ticotsky  
Gordon & Erica Weiss  
Marian Wexler  
James & Susan Wildes  
Randy and Tanya Wingate  
Edward Wittenstein & Alyssa Greenwald  
Nancy Yedlin & Peter Blasini

**NOVEMBER 5**

Lewis B. Aaron \*  
 Arnold Baltimore \*  
 Judge Robert Berdon  
 Frances Bolton \*  
 Eva Chetrick \*  
 Jean Cohen \*  
 Irene Lesnie Cohn \*  
 Roberta Danza \*  
 Stanley P. Darer  
 Joseph Eisenbuch  
 Virginia Fineberg  
 Lena Wrubel Greenbaum \*  
 Beatrice Hahn  
 Lilo Hanauer  
 Julia Jacobson \*  
 Nell King  
 Paula Kirsch  
 Esther Labacz  
 Isaiah Lambert \*  
 Dr. Morton J. Loeb \*  
 Dinah M. Mendoza \*  
 Cantor Bertram Naden  
 Frances Polak \*  
 Elinor Pollock  
 Mollie Rattner  
 Marvin Rosenbaum  
 Abraham E. Rubington \*  
 Reuben Shapiro  
 Murray B. Shemitz \*  
 Howard J. Spodick  
 Esther Steiglitz \*  
 Gay Steinbach  
 Ursula Lauber Steinhardt \*  
 Rebecca Wilensky

**NOVEMBER 12**

Bertram B. Adler \*  
 Louis Arnopolsky  
 Bella Averbuch  
 Sylvia Beckerman  
 William Beckerman  
 Edward Bernstein  
 Eva B. Black \*  
 Stanley Brown  
 Robert Carberry  
 Joel Cogen  
 Saul Finkelstein  
 Dr. Jacob Benjamin Fishman \*  
 Marion Goldberg  
 Milton W. Grossman \*  
 Judge Charles Henchel \*  
 Caroline G. Herrmann \*  
 Jean Sherres Kahn  
 Anne Keegan  
 Charles Kleiner \*  
 Ruth Klevorick  
 Florence Klugman  
 Arthur Lesser  
 Norton M. Levine \*  
 Herbert Daniel Lewis \*  
 Dr. Bernard Lipin \*  
 Benjamin Lipka  
 Bruin Lipman  
 Frieda Lonard  
 Evelyn Newman  
 Charles Perrow  
 Morton Proscio \*  
 Greta Puklin \*  
 Bernard I. Schub  
 Aramina Schwartz \*  
 Jack Shapiro  
 Esther K. Silverman \*  
 Esther Soffer  
 Hermine Swimmer \*  
 Edna May Thalheimer \*  
 Jacob B. Ullman \*  
 Adele Ida Yudkin  
 Minnie B. Yudkin \*  
 Elsbeth Zabin  
 Beth Zakar

**NOVEMBER 19**

Robert Abels  
 Mollie Aronson  
 Anna S. Baskin \*  
 Jane Bender  
 Abraham Berger \*  
 Robert Allen Caesar \*  
 Gertrude Caplan  
 Sylvia Greenbaum Cohen \*  
 Sidney Eder  
 Lauren V. Farber \*  
 Rhoda Weiner Feldman \*  
 Christopher Rodney Gennett  
 Robert Goldberg  
 Esther G. Goldstein \*  
 Barbara Goodman \*  
 Frances Gordon  
 Mark Gredinger  
 Rita D. Hershenson \*  
 Nathan C. Herz \*  
 Rose Altschuler Hozer  
 Elaine Jacobson  
 Rose Johnson \*  
 Anne Kasterbaum  
 Charles D. Keegan  
 Alan Lakin  
 Pauline Lichtenstein \*  
 Shirley K. Lichtman \*  
 Sylvia Mangen  
 Marcia Margolis  
 Olga Nobleman  
 Ray Olderman  
 Rose Proctor  
 Sheila L. Rauch \*  
 Sadie S. Robin \*  
 Ruth Rubington \*  
 Sarah Sasson  
 Bernice Felix Schnitman \*  
 Lillian Siskin  
 Jean Solomon \*  
 Daniel A. Steinbach \*  
 Florence Amelia Wallack \*  
 Paul D. Wingate \*

**NOVEMBER 26**

Robert Ackerman  
 Isabel Baar  
 Harriet F. Berger \*  
 Eva Berkowitz  
 Ruth Birnbaum \*  
 Dora Bostin \*  
 David Steven Braverman  
 William Cohen  
 Philip Stephen Dicks \*  
 Benjamin Dunn  
 David Ehrlich  
 Jack Eisman  
 Jenny Yudkin Enkelis  
 Lucille Enson  
 Bertram "Frankenberger Sr." \*  
 Arthur Giglio Sr  
 Max Goldfarb  
 Morris Harrison \*  
 Matthew W. Kaminsky  
 Hilda Kaminsky \*  
 Max Kern \*  
 Bessie Kraft  
 Clara L. Langrock \*  
 Edward Phillips Levine \*  
 George Lublin  
 Aaron Mack  
 Ruth Hahn Meyer  
 Michael Milles  
 Anna Montlick \*  
 Rose O. Osterweis \*  
 Flora Rothchild \*  
 M. Alan Rubin  
 Irwin Schoen  
 Tesse D. Shemitz \*  
 Sidney Silverstone  
 Rabbi Edgar E. Siskin \*  
 Louis Soffer  
 William P. Spear \*  
 Benjamin H. Spier \*  
 Solomon J. Stein \*  
 Richard M. Stiner \*  
 George Swirsky \*  
 Howard M. Weinick \*  
 Marion Ullman Weinstein \*  
 Abraham Weissman \*  
 Harry Jay Wexler  
 Freda Zanker  
 Hyman Zimmer

\*In Perpetual Memory

IN SYMPATHY

Sheila Greenstein on the passing of her husband, Edward Biondi  
 Steven Germaine on the passing his mother, Janet Germaine  
 Mark Germaine on the passing his mother, Janet Germaine  
 Donald Germaine on the passing his wife, Janet Germaine  
 Matthew Kerzner on the passing of his father, Michael M. Kerzner



**DECEMBER 3**

Meyer ben Ya'akov Averbuch  
Theresa B. Cahn \*  
Fay Ehrlich  
Alvin Evans  
Samuel Evans  
Norma Firtel \*  
Beatrice Franks  
Eleanor Freedman  
Elizabeth Anne Gans \*  
Harry Goldberg  
Nelson M. Hahn \*  
Sara C. Heller  
Milton Heller  
Don Hellerman  
Beverly Kasten  
Phyllis Kauffman \*  
Mabel Goodman Kaufman \*  
Anne Ketover  
Benjamin Klatsky  
Robert Klugman  
Jean S. Maltzman \*  
Trudy Miller  
Dr. Burness E Moore  
Doris Parmet  
Martin Pripstein  
Marjorie Rogowski \*  
Marjorie Rosenthal  
Dorothy Setlow  
Morris Silverberg  
Milton A. Steinbach \*  
Henry Stinow \*  
Lou Stone  
Irwin Weill  
Marvin Yudkin  
David Paul Zudekoff

**DECEMBER 10**

Alfred Barnston  
Mae Berman  
Joel Bolsky  
Abraham S. Brown  
Bertha Brown \*  
Rhoda Lipofsky Cahn  
Rhoda Lipofsky Cahn  
Benjamin Davis  
Sarah Feinstein  
Louis Goldberg  
Seymour M. Golden \*  
Rose Dorfman Goldhamer \*  
Enid Frank Goldsmith  
Belle Gordon  
Mr. David Grossman  
Ilse Horn  
Mr. Philip Horowitz  
George C. Howard \*  
Estelle Levine Jacobs  
Louis Kahn  
Mae Proscio Katz \*  
William B. Koufman \*  
Rose Kryger  
Joseph Kugler  
Bessie Lazarus \*  
Gale M. Leibowitz  
Stanley Lichtenstein \*  
Rosa F. Lyons \*  
Mona V. Maizell \*  
Samuel H. Montlick \*  
Nathan Passell \*  
Lawrence Paul \*  
Ernest Paul  
Morton Pechter \*  
Abraham Rashba  
Edward A. Reich \*  
Dorothy Rosenberg  
Betty Seltzer  
Beatrice Miller Shapiro  
Celia Shukovsky  
Herman Shukovsky  
Samuel Silverman \*  
Estelle Silverstone  
Louis M. Sonnenberg \*  
William Steckerl  
Edward Stern  
Herman Tenin  
Matthew E. Ticotsky  
Philip S. Ticotsky  
Barney Trotsky \*  
Marian L Young

**December 17**

Muriel Aaron \*  
Sadie Ackerman  
Leon Aries  
Harry Baskin \*  
Sylvia Bailey Berkowitz  
Sarah Prince Cheskis  
Peter Dermer  
Ethel Donath  
Herman Epstein \*  
Benjamin Gittler  
Gertrude Gittleson \*  
Hattie Glasner  
James R. Glassner \*  
Bernard Goldman  
Clara Phillips Goodhart \*  
Albert L. Grodd  
Mae Maisie Hammer  
Tz'vi-Hersh Ben-Avraham Hanina  
Abe Harris  
Herbert (Herb) Horowitz  
Mitchel Jones  
Augusta Kean \*  
Yefim Khait  
Mae Reinstein Klatsky  
Leo Kornicker \*  
Celia C. Levine \*  
Joshua Loewenbaum  
Susan Loshier  
Mildred Orzack  
Marion L. Perloth \*  
Sadie Rotberg Rifkin \*  
Barbara Fisher Rosenthal \*  
Mark B. Schatten \*  
Mark B. Schatten \*  
Leopold Schoenberger \*  
Herbert Siperstein  
Leo Sklarz \*  
Bernard P. Spear \*  
Jeanne Tiven

**DECEMBER 24**

Jennie Rogowsky Alderman  
Jack Baltimore \*  
George Bennett \*  
Irving Bleich  
Sara A. Brown  
Harriet K. Cahn \*  
Ethel Horn Caminear  
Sadie Caplan  
Richard Cohen \*  
Edith Koosis Donen  
Annie Evans  
Herbert B. Goldberg \*  
Hattie J. Goodman \*  
Louis Green \*  
Julius Hartenstein \*  
Eleanor Jacobs  
Howard Kaplan  
Samuel Kasterbaum  
Frances Landowne  
Robert E. Lapidus \*  
Meyer Leshine  
Nancy Mack  
Aida Y. Mettler \*  
Michael Myers \*  
James O'Brasky \*  
Abraham Ominsky  
Marlene Paige  
Benjamin Pious  
Herman Roseman \*  
Marvin L. Rosenfeld  
Bernice Rubinstein  
Elaine Samplinear  
Irwin Mellion Siegel \*  
Nathan Siperstein  
Ann Sklarz  
Robert C. Spodick \*  
Nancy Weiner Stiner \*  
Lester B. Weiss  
Carl Zelson

**DECEMBER 31**

Martha Abrams  
Jeffrey Abrams  
Robert Adams  
Simon Arovas \*  
Dr. Merrill Abner Baratz \*  
Jacob Bass  
Richard Lyon Belford  
Frances Belman  
Ann Berland  
Jeanette Blech  
Eve Bovilsky  
Mollie Osias Burness \*  
Celia Byer  
Samuel Campner  
Annette Cohen  
Joseph Cohn  
Estelle Corper \*  
Dorothy Katz Greenblatt  
Donald Henry Grinder \*  
Adrian Hirschhorn  
Esther Hubelbank  
Marion Kauffman \*  
Minna Kleeberg \*  
Jack Krug  
Paul H. Lavietes \*  
Marshall Lavin  
Zelman Evans Leshine  
Lydia Levine  
Phyllis Palmieri Loewenbaum  
Sigmund Loewenbaum  
Sybella Ruth Maskel \*  
Forester Newick  
Minnie Perlman  
Theresa Phillips  
Rebecca Polsky \*  
Joseph Rattner  
Susan E. Rosen \*  
Sidney C. Rosenberg \*  
Max Rubenstein  
Miriam Hamerman Rudnick \*  
Jeannette Schycon \*  
Miriam Shapiro  
Louis Eli Shapiro \*  
Hon. Arthur J. Sills \*  
Barbara Silverstone  
Pauline Smolinsky  
Martha Solnit  
Abraham Louis Starin \*  
Kate Gootenberg Starin \*  
Fred H. Steiger  
Leo Stein \*  
Yetta Steinklein \*  
Marvin Stone  
Flora Switko  
Martin Stuart Weisbart \*  
Meyer Werzburg \*  
Mollie S. White \*  
Annette G. Zelson \*  
William Zwickler

~ IN MEMORIAM ~

*Remebering those lost in the last 2 months*

Edward Biondi  
Janet Germaine  
Paul Goldstein

Michael M. Kerzner  
Beverly Zakar

*May their memory be for a blessing*

\*In Perpetual Memory

“...who donates much to charity becomes the richer for it...”

Zohar iii 110b

JULY 1, 2021– OCTOBER 1, 2021

**ENDOWMENT FUNDS:** (invested to generate annual income for specific purposes)  
**Cemetery Fund**

Kenneth Winer **In Memory of**  
LAWRENCE WINER

**Robert E. Goldberg Peace & Justice Fund**

Jay & Carol Charkow **In Honor of**  
DAVID MILLEN  
Bill & Nancy Horowitz EDWARD BIONDI  
Nancy Kramer JULIUS ALDERMAN

**Kauffman Family Fund**

Steven & Alisa Germaine **In Memory of**  
STUART GRODD

**Bernard D. Miller Fund** (youth)

Charles & Elinor Miller **In Memory of**  
DOROTHY P. MILLER

**Isidor E. Offenbach Musical Service Fund**

Russell D. Offenbach **In Memory of**  
FRIEDA BURKE OFFENBACH

**J. Yale Rubin Fund**

Carole Greenbaum & Family **In Memory of**  
IDA RUBIN LAPPIN  
David Rubin Family IDA RUBIN LAPPIN

**TARGET AREAS:** (meant for immediate use of funds)

**General**

The Astmann Family  
Zhozefina Averbukh  
Priscilla Jencks

Anonymous	<b>In Appreciation of</b> PETER ALPERT for his continuous dedication in our transition
Anonymous	MICHAEL DIMENSTEIN for his continuous dedication in our transition
Anonymous	SARAH B. GREENBLATT for her continuous dedication in our transition
Anonymous	LAWRENCE SCHAEFER for his continuous dedication in our transition
Allen & Fern Bailis	CMI and the HIGH HOLY DAYS
Sylvia Betcher & Martin Korn	HHD Livestream hospitality
Lisa Feldman	HHD Livestream hospitality
Sheila Kerzner	MICHAEL DIMENSTEIN for leading a shiva service
Ellen Abrams King	THE CMI COMMUNITY that “I have grown up in and my parents love so dear.”
Estelle Baltimore	<b>In Honor of</b> IRMA BACHMAN and wishes for a speedy recovery, with much love and caring
Michael Dimenstein & Hedda Rubenstein	DAVID SILVERSTONE'S new grandson and the first haircut of his 3 year old grandson
Gerald & Bayle Forman	NEIL & MARLENE GREENBERG'S 60th Wedding Anniversary
Linda Proscio	RABBI BROCKMAN
Michael Ross & Elizabeth Stenger	CANTOR ARTHUR GIGLIO in gratitude for soaring melodies & uplifting vocals
Gordon & Erica Weiss	CANTOR ARTHUR GIGLIO
Gordon & Erica Weiss	RABBI BRIAN IMMERMEN

Brenda Arovas  
Brenda Arovas  
Brenda Arovas  
Elizabeth Barnston  
Larry & Phyllis Bausher  
Peter & Nancy Berdon  
Michael & Rachel Berman  
Elaine Blumenthal  
Stuart & Hedy Bush  
Stuart & Hedy Bush  
Robert & Laura Cannon  
Robert Cole

Robert Cole  
Judith Connolly  
Michael Dimenstein & Hedda Rubenstein  
Michael Dimenstein & Hedda Rubenstein  
Michael Dimenstein & Hedda Rubenstein  
The Dowgiewicz Family  
The Dowgiewicz Family  
Susan Engelhardt  
Deborah Faehnel  
Burton & Suzanne Finkel  
Burton & Suzanne Finkel  
Burton & Suzanne Finkel  
Burton & Suzanne Finkel  
Allan & Eden Fisher  
Lisa Franks  
Bernice Giskin  
Bernice Giskin  
Albert Burton Glassman  
Andrew J. Graham, MD  
Neil & Marlene Greenberg  
Neil & Marlene Greenberg  
Neil & Marlene Greenberg  
Sarah B. Greenblatt  
Sarah B. Greenblatt  
Sarah B. Greenblatt  
Judith Hahn  
Robert & Judith Jacobson  
Dr. David Kaminsky  
Thomas Kavanaugh  
Paulette Kenney  
Kelly King  
Ruth Koizim  
Ruth Koizim  
Jerome Korman  
Joel & Cindy Kramer  
Raymond Kubick  
Hilary Landorf  
Jeremy Leven  
Lawrence Levenson  
Philip & Sondra Lublin  
Howard Lurie  
Nancy Moss-Racusin  
Karen Orzack-Moore & Daniel Moore  
Karen Orzack-Moore & Daniel Moore  
Howard & Susan Rashba  
Peter & Nancy Rathman  
Robert & Melissa Rich  
Joel & Lorraine Roseman

**In Memory of**

JOSEPH AROVAS  
ALFRED SIMON  
GRETA SIMON  
LEILA GOMPERTZ  
SYDNEY BRUSKIN  
ROBERT E. FRANKES  
HARRIET G. RASHBA  
DONALD F. BLUMENTHAL  
LEWIS BUSH  
SUSAN BUSH  
EDWARD BIONDI  
RICHARD H. COLE, my father, of blessed memory  
CLARE COLE, my mother, of blessed memory  
EDWARD BIONDI  
EDWARD BIONDI  
MICHAEL KERZNER  
RELLA RUBENSTEIN  
EDWARD BIONDI  
JANET GERMAINE  
HARRIET G. RASHBA  
EDWARD BIONDI  
PHILIP D'ARCO  
TERESA D'ARCO  
FAY FINKEL  
JOSEPH FINKEL  
EDWARD BIONDI  
ROBERT E. FRANKES  
LILLIAN FLEISCHNER  
HENRY GISKIN  
BERNICE “BUNNI” GLASSMAN  
DORA PIOUS  
ANNA BARKIN  
ESTHER GREENBERG  
MORRIS GREENBERG  
EDWARD BIONDI  
JANET GERMAINE  
MICHAEL KERZNER  
DR. RICHARD SHELLING  
BERNICE ABRAMS  
ALICE KAMINSKY  
EDWARD BIONDI  
CHARLES KENNEY  
BEVERLY ZAKAR  
PHILIP DALE  
FANNIE GOLDFARB  
LILLIAN “BUNNI” KORMAN  
JONATHAN CANTOR  
JANET GERMAINE  
HERBERT LANDORF  
ROBERTA DANZA  
LESLEY SIEGEL  
RISA GORDON BECKER  
JOSEPH HOZER  
SHIRLEY RACUSIN  
MILDRED L. ORZACK  
MILDRED L. ORZACK  
DORIS E. MOORE  
HARRIET G. RASHBA  
MARTIN SELIGMAN  
HERBERT SAXE  
SADIE ROSEMAN

Lawrence & Betsy Rosenthal	The KRAFT, ALTERMAN, & ROSENTHAL families
David & Debra Samuels	RUTH SAMUELS
Lawrence Schaefer & Lina Lawall	AUGUSTA LAWALL
Harvey & Judy Schatten	LEO MANSDORF
Carol Schreiber	DR. SANFORD SCHREIBER
Paula Shemitz	HARRET SCHIFF
Jane Silva	JOSEPH SILVA
Jane Silva	LILLIAN SILVA
Mark & Judith Sklarz	SEYMOUR ZELLMAN
Susan E. Skolnick	DAVID W. SKOLNICK
Jeffrey Smith & Edith Rotkopf	MARJORIE SMITH
Charles Spatz & Marian Montano	IRVING SPATZ D.D.S.
Kenneth Spitzbard	JANET GERMAINE
Marc Wallman & Cynthia Carr	BEATRICE WALLMAN
Nancy Yedlin & Peter Blasini	RITA YEDLIN

**Building Fund**

Michael Dimenstein & Hedda	<b>In Honor of</b> MAX ALDERMAN becoming a Bar Mitzvah
Paula Adelson & Janet Rozman	<b>In Memory of</b> SIMON GROSSMAN
Diane Lublin	SAMUEL ALLEN
Charles & Judith Naden	ROBERT NADEN
Lawrence Schaefer & Lina Lawall	AUGUSTA LAWALL
Mark & Judith Sklarz	SEYMOUR ZELLMAN

**Hunger Fund**

Katherine Benard  
Liza Comita & Simon Queenborough  
James Horwitz & Sandra Allison  
John & Barbara Lichtman  
Nancy Olins

Philip & Sondra Lublin	<b>In Honor of</b> MERLE LEVY
Saul & Sonya Goldberg	<b>In Memory of</b> BERTHA ROSENTHAL KAHN
Frederick J. Rosen	EDWARD BIONDI
Frederick J. Rosen	JANET GERMAINE
Frederick J. Rosen	BERTHA ROSENTHAL KAHN
Frederick J. Rosen	MICHAEL KERZNER
Shirley Scholder	MICHAEL KERZNER, beloved brother of Elliott

**Library Fund**

Diane Lublin	<b>In Honor of</b> NICOLE & DUSTIN HELFGOTT'S wedding
--------------	--

**Music Fund**

Ruth Koizim	<b>In Memory of</b> EDWARD BIONDI
Steven & Alisa Germaine	JAMES DEFEO
Diane Lublin	AUGUSTA LAWALL
Lawrence Schaefer & Lina Lawall	

**Nursery School Fund**

Lewis Bower	<b>In Memory of</b> JANET GERMAINE
Herbert Cohen	JANET GERMAINE
Marvin & Arlene Cohen	JANET GERMAINE
Michael Dimenstein & Hedda Rubenstein	JANET GERMAINE
Michael & Erika Forte	JANET GERMAINE
Mitchell Goldblatt	JANET GERMAINE
Paul & Ilene Kauffman	JANET GERMAINE
Robert Kauffman	JANET GERMAINE
George & Susan Krall	JANET GERMAINE
Peter & Cindy Lazaroff & Family	JANET GERMAINE
Howard Lipton	JANET GERMAINE
Ellen Massey-Ross & Family	JANET GERMAINE
Joanne McAuliffe	JANET GERMAINE
Holly Ohanesian Coulter	JANET GERMAINE
Richard & Marcia Witten	JANET GERMAINE

**Peah Garden**

Linda Altieri	<b>In Memory of</b> PAUL FREEDMAN
Brenda Burt	PAUL FREEDMAN
Barb Cole	PAUL FREEDMAN
Kathy DePasquale	PAUL FREEDMAN
Caroline Griffin	PAUL FREEDMAN
Sue Jannitto	PAUL FREEDMAN
Stephanie Kollet	PAUL FREEDMAN

**Religious School Scholarship Fund**

Allan Hillman & Millicent Marcus	<b>In Appreciation of</b> CARYL STEINBERG
Joyce Romanow	<b>In Memory of</b> ANNA EISEN

**Social Action Fund**

Susan Rabin	<b>In Honor of</b> DRS. TRACY RABIN, JEREMY SCHWARTZ, NAOMI & NOAH SCHWARTZ leading services on Friday, July 2.
Barbara Marcus	<b>In Memory of</b> DENNIS FIBEL
Barbara Marcus	HARRIET FIBEL
Barbara Marcus	KALMAN FIBEL
Charles & Judith Naden	FRANK GOLDSMITH

**SPECIAL THANKS:**

Scott & Abigail Friedman for contributing towards the rental of the tent during the High Holy Days.



## CMI MENORAH LIGHTING

Join us each night at sunset as we light our beautiful outdoor Menorah on the lawn outside. Visit the website, [cmihamden.org](http://cmihamden.org) for more information.

**NOVEMBER WORSHIP SERVICES & STUDY**

**SHABBAT NITZAVIM**  
Deut. 29:9 – 30:20

**Friday, November 5**  
6:00 p.m. Evening Service

**Saturday, November 6**  
9:00 a.m. Torah Study  
10:30 a.m. Tot Shabbat

**SHABBAT VAYEILECH**  
Deut 31:1 – 31:30

**Friday, November 12**  
6:00 p.m. Evening Service

**Saturday, November 13**  
9:00 a.m. Torah Study  
Morning Service Celebrating  
The Bar Mitzvah of Tal Berkowitz

**SHABBAT HA'AZINU**  
Deut 32:1 – 32:52

**Friday, November 19**  
6:00 p.m. Evening Family Service

**Saturday, November 20**  
9:00 a.m. Torah Study

**SHABBAT VEZOT HABERAKHAH**  
Deut 33:1 – 34:12

**Friday, November 26**  
6:00 p.m. Evening Service

**Saturday, November 27**  
9:00 a.m. Torah Study  
10:30 a.m. Tot Shabbat

**DECEMBER WORSHIP SERVICES & STUDY**

**SHABBAT BERESHIT**  
Genesis 1:1 – 6:8

**Friday, December 3**  
6:00 p.m. Chanukah Family Service

**Saturday, December 4**  
9:00 a.m. Torah Study  
10:30 a.m. Morning Service Celebrating  
The Bat Mitzvah of Victorija Brin

**SHABBAT NOACH**  
Genesis 6:9 – 11:32

**Friday, December 10**  
6:00 p.m. Evening Family Service

**Saturday, December 11**  
9:00 a.m. Torah Study  
10:30 a.m. Morning Service Celebrating  
The Bar Mitzvah of Jacob David Fasano

**SHABBAT LECH-LECHA**  
Genesis 12:1 – 17:27

**Friday, December 17**  
6:00 p.m. Evening Service

**Saturday, December 18**  
9:00 a.m. Torah Study  
10:30 a.m. Morning Service Celebrating  
The Bar Mitzvah of Elijah Jackson

**SHABBAT VAYERA**  
Genesis 18:1 – 22:24

**Friday, December 24**  
6:00 p.m. Evening Service

**Saturday, December 25**  
9:00 a.m. Torah Study  
10:30 a.m. Morning Service

**SHABBAT CHAYEI SARA**  
Genesis 2:1 – 25:18

**Friday, December 31**  
6:00 p.m. Evening Service

**Saturday, January 1**  
9:00 a.m. Torah Study

*Service times are subject to change. For the most up-to-date information and to hear sample tunes from services, go to [cmihamden.org](http://cmihamden.org)*





# ROBERT E. SHURE, INC.

— FUNERAL HOME —

Dedicated to the Dignity and Respect of Tradition.

543 George Street, New Haven, CT 06511

**Robert E. Shure**  
Founder


**203-562-8244**  
[shurefuneralhome.com](http://shurefuneralhome.com)

**James M. Shure**  
President

**Larry Lazaroff** **Arnold's Jewelers**  
The North Haven Diamond Center

117 Washington Avenue  
North Haven Shopping Center  
North Haven, CT 06473

**Phone:** (203) 239-4291  
**Fax:** (203) 230-9287  
**Email:** [laztwo@aol.com](mailto:laztwo@aol.com)  
**Web:** [TheArnoldsjewelers.com](http://TheArnoldsjewelers.com)




**Ear Nose and Throat**  
Specialists of Connecticut

David I. Astrachan, M.D.  
Craig S. Hecht, M.D.

**David I. Astrachan, M.D.**  
Ear, Nose and Throat Medicine • Head and Neck Surgery

Phone 203.248.8409  
Fax 203.281.2905  
[www.entct.com](http://www.entct.com)



**What will your Jewish Legacy be?**



**CREATE A JEWISH LEGACY**  
GREATER NEW HAVEN

Create your legacy for Congregation **Mishkan Israel**

**Jewish Foundation**  
OF GREATER NEW HAVEN




For more information about creating your legacy for CMI, contact Lisa Stanger, (203) 387-2424 x382, [lstanger@jewishnewhaven.org](mailto:lstanger@jewishnewhaven.org), [www.newhavenjewishfoundation.org](http://www.newhavenjewishfoundation.org) | [www.jewishlegacynewhaven.org](http://www.jewishlegacynewhaven.org)



Athena Cummings  
Johns Hopkins University



Spencer McCleery  
Harvard University



# Have you heard?

Our Class of 2021 graduates are attending some of the finest colleges and universities in the world! Discover *The Hamden Hall Experience*: challenging academics, a dynamic learning environment, and faculty who love their craft.

Visiting Opportunities:

Open House Nov. 7 / 1-3 p.m.

Coffee and Campus Tours Dec. 9 / 9-10:30 a.m.

Jan. 20 / 9-10:30 a.m.

Registration Required

## HAMDEN HALL COUNTRY DAY SCHOOL

Educating students in PreSchool through Grade 12  
1108 WHITNEY AVE. HAMDEN, CT. 203.752.2610  
WWW.HAMDENHALL.ORG TRANSPORTATION AVAILABLE



Steven Zhang  
Yale University



Rebecca McChesney  
Rensselaer Polytechnic Institute

MONUMENTS ERECTED IN ALL CEMETERIES

# ***NOLAN'S HAMDEN MONUMENT COMPANY LICHTENSTEIN COMPANY***

323 WASHINGTON AVE., HAMDEN, CT 06518

(203) 288-8486 • (203) 287-1593

CT Toll Free Only (800) 852-8865 • Fax (203) 287-1593

JOHN R. NOLAN

MICHAEL F. NOLAN

nolansmonuments@att.net

# Weller Funeral Home

The oldest Jewish family funeral home serving the Jewish community of greater New Haven with dignity since 1881.

424 Elm Street, New Haven, CT 06511

(203) 624-6912

[www.wellerfuneralhome.com](http://www.wellerfuneralhome.com)



*Congregation Mishkan Israel  
Annual Chanukah  
Torch Run*



**Sunday, December 5 • 9:15 AM**

Let's gather at East Rock Park parking lot at 9:15 a.m. and run to Mishkan Israel (a 2.5 mile downhill course) carrying the authentic torch found in Modiin, the town where Chanukah originated. All ages welcome! PK-6<sup>th</sup> grade must be accompanied by an adult. RSVP for the Torch Run to Sarah in the CMI office at [slegassey@cmihamden.org](mailto:slegassey@cmihamden.org) or (203) 288-3877. We are unable to provide any transportation this year.

## CMI'S ANNUAL MITZVAH MALL IS BACK IN OUR BUILDING!

**Sunday, November 21, 2021 at 10:00 AM**

Instead of purchasing gifts at the mall, why not "buy" a warm meal for a person experiencing homelessness, clothing for a family in need or toys for hospitalized children? All gift donations come with a certificate and envelope to present to a loved one in their honor for the holidays. Participants experience the gratifying mitzvah of charity (tzedakah) as they learn about and donate to non-profit agencies. For more information visit our website, [cmihamden.org](http://cmihamden.org).



**The Congregation Mishkan Israel**  
785 Ridge Road  
Hamden, CT 06517

*Next Bulletin Deadline 11/1/21*

Time Value Data  
Deliver No Later than November 1

Non Profit Org  
US POSTAGE  
PAID  
Permit #156  
New Haven, CT

**THE CONGREGATION MISHKAN  
ISRAEL BULLETIN**

November/December 2021 Series 106, #2  
THE CONGREGATION MISHKAN ISRAEL  
785 Ridge Road, Hamden, CT 06517  
Phone: (203) 288-3877 Fax: (203) 248-2148  
<http://cmihamden.org>

**Rabbi Brian P. Immerman** x236  
[rabbi@cmihamden.org](mailto:rabbi@cmihamden.org)

**Rabbi Emeritus Herbert N. Brockman, Ph.D. D.D.** x243  
[cmirabbi@cmihamden.org](mailto:cmirabbi@cmihamden.org)

**Cantor Arthur Giglio** x244  
[cantorg@cmihamden.org](mailto:cantorg@cmihamden.org)

**Michelle Goldstein**, Religious School Director x237  
[mgoldstein@cmihamden.org](mailto:mgoldstein@cmihamden.org)

**Susan Witten Nason**, Early Childhood Director x245  
[sperry@cmihamden.org](mailto:sperry@cmihamden.org)

**Michael Dimenstein**, President  
[president@cmihamden.org](mailto:president@cmihamden.org)



## CHANUKAH FAMILY SERVICE

---

Please join us on Friday, December 3 at 6:00 p.m. for a Chanukah Family Service. Rabbi Immerman and Cantor Giglio will share the story of Chanukah and we will sing our favorite songs! We invite all families to bring a menorah and candles to light together so we can enjoy the warmth of their glow.