



# The Congregation Mishkan Israel

*More than a place. We're a community.*

NOVEMBER/DECEMBER 2020

Series 105 Number 2

## **CMI Virtual Cantor's Concert and Fundraiser To Celebrate CMI at 180 years**

### **Featuring Mark Berman**

*Broadway, television performer and composer  
comes home to Mishkan Israel  
and our own Cantor G & Special Friends*

**November 14, 2020**





## MEMBERSHIP CORNER WELCOME TO NEW MEMBERS

The Congregation extends a warm welcome to new members: Allan & Eden Fisher, Ellery & Penny Frahm and their children Liev & Sylvie, Alice & Paul Kosowsky.



## ONEG SHABBAT & PULPIT FLOWERS

One of the nicest ways to honor a special occasion is to sponsor an Oneg Shabbat and/or pulpit flowers for services. Congregation Mishkan Israel is grateful to the following OnegShabbat/Flower Sponsor

**September 27** - Yom Kippur flowers given in memory of Evelyn L. Greenblatt, with love from her daughter, Sarah B. Greenblatt.

To arrange for your sponsorship, contact Sarah at (203) 288-3877 or [slegassey@cmihamden.org](mailto:slegassey@cmihamden.org)

## IS SOMEONE IN THE HOSPITAL?

Area hospitals are not permitted to notify us when a congregant has been admitted. If you know of a congregant who is in the hospital and would appreciate a call or visit, please contact Rabbi Immerman's office at (203) 288-3877 or [rabbi@cmihamden.org](mailto:rabbi@cmihamden.org).



## THANK YOU!

Our High Holy Day worship would not have been possible without the many people who participated in the services and gave generously of their time.

Thank you to:

- **Sue Millen, Lina Lawall**, and our “Zoom” **B’nai Mitzvah** students for the aliyot.
- **Corey Stone, Aaron Singer** and **Max Jackson** for beautifully chanting Torah.
- **Julia Schroers, Leo Slattery** and **Eli Jackson** for translating Torah.
- **Matthew Lupoli, Sircia Levitt**, and **Eliana Ross** for reading Haftara.
- **Michael Braverman** for sounding the Shofar.
- **Professor Shelly Kagan** for leading a text study group
- **David Chevan** and **Stan Friedman** for organizing the Reflection Service.
- **Karen Baar, Nancy Yedlin, Nancy Moss-Racusin** and **Beth Stenger** for guiding us in a conversation about race.
- **Rabbi Brockman** for offering words of comfort and blessing our community.
- **Ben Epstein** and **Jason Immerman** for running Zoom.
- **Kevin Mack** for your beautiful organ music.
- **Chad Emerson** for setting up the video and audio equipment.
- **David Trovarelli** for on-site sound production.
- **Sarah Greenblatt** for beautifying our sanctuary by sponsoring flowers.
- The **CMI Staff** for assisting with tech support and your ongoing commitment to our community.



## A MESSAGE FROM THE RABBI

**Rabbi Brian P. Immerman**

Navigating the Uncertain Together

I will never forget the overwhelming positive energy I felt when I walked out of our empty sanctuary and building after Yom Kippur to see over 40 people in the parking lot for Havdalah and a final blast of the Shofar. This year's High Holy Days were so many things: uplifting, sad, meaningful, lonely, joyful, and challenging. While we have used those words to describe our holidays in the past because life is a combination of all of those moments, entering the year 5781 brought these emotions to the surface like never before. The outpouring of support and gratitude that I felt during and after has uplifted me like I could have never imagined. Jenny, Maggie, Aiden and I are so grateful to be part of this community that embraces and supports each other during these most challenging days of our lives.

The days ahead are going to be challenging for our country as we continue to cast our ballots and begin to tally the votes. Judaism teaches us to love those who are like us and those who are different, those who agree with us and those who don't. We will continue to live our lives based upon our sacred values in the Torah that grow from this love. We will continue welcoming the stranger, clothing the poor, feeding the hungry, and caring for the sick and we will not compromise these values because of fear. We will continue to help those who are struggling within our community and those outside of our walls as well. All human beings are created b'tzelem Elohim, in the image of God, and we must work to see the divine in each person whom we encounter.

As I write this in early October, the leaves are changing and we now must put on coats and hats to engage safely with friends and family outdoors. Searching for shade has changed to searching for outdoor heaters as we face the unpredictable challenges that await us this winter. The

unknown can make us fearful but we just remember that it also allows for endless positive possibilities. We will continue to learn and pray together online, to help our community through learning, prayer and actions that help repair the brokenness in our world. As we continue to learn how to adapt and grow together over these next many months, please know that you are never alone and I and the rest of the CMI community are always just a phone call or click away. I wish you all warmth, comfort and peace as we navigate the uncertainty in our world together.

SAVE THE DATE

## MLK Service

January 15, 2021

7:00 p.m.



## PROTOCOL FOR MI SHEBERACH (HEALING PRAYER) LIST

To add or delete a name to our Mi Sheberach (healing prayer) list that is read at services, please call Rabbi's office at (203) 288-3877. You must have permission from the individual to have their name read in public. (There is always the Hebrew option as well.) Names will remain on the list for one month, unless renewed or requested to be deleted.



## CANTOR'S NOTES

### Cantor Arthur Giglio

Your Cantor wants to begin by thanking everyone whose combined efforts turned our COVID High Holy Days into a complete success. Let it be known, if it was not for the herculean efforts of Rabbi Immerman, our Temple Administrator Merav Canaan, the support staff of Tamara Epstein and Sarah Legassey, Chad Breer our resident Sound Savant and his very talented colleague David Trovarelli, and all wonderful lay volunteer & participants; we would not have been able to pull it off. Even with everything working technically on our end the website that hosts our LiveStream went offline for 20 minutes at the beginning of Rosh Hashanah! You can do everything possible to be prepared and still something will happen to toss a wrench into the mix. Then again, this is very much like real life, except it is real virtual life.

*Continued on page 5...*

### CMI Virtual Cantor's Concert and Fundraiser To Celebrate CMI at 180 years

#### Featuring Mark Berman

Broadway, television performer and composer  
comes home to Mishkan Israel  
and our own Cantor G & Special Friends



direct from  
The *Marvelous Mrs. Maisel*  
season three

November 14, 2020

Join us via ZOOM, Livestream, or your Phone

7:00 pm to 8:30 pm

"Doors" open at 6:30 pm for Socializing – BYOB!

Registration required – [cmihamden.org](http://cmihamden.org) - Deadline November 12, 5:00 pm



## PRESIDENT'S MESSAGE

### Michael Dimenstein

As falling temperatures and shorter periods of daylight replace the vibrant colors of Fall, we cherish the memory of the beautiful High Holy Day services and CMI outdoor gatherings. Although COVID precautions required modification of format, I appreciated receiving notes and chat messages from many of you who attended and expressed how pleased and moved you were by the experience. My sincere thanks to all who shared our joys and challenges as we found new ways to usher in this New Year at CMI. I am especially grateful for the extraordinary efforts by Rabbi Immerman, Cantor Giglio, Michelle Goldstein, Kevin Mack, Merav Canaan, Tamara Epstein and Sarah Legassey, who spent countless hours preparing for, and presenting a most memorable and satisfying set of Yom Tov offerings.

For many of us, one of the most meaningful rituals of our worship is the Birkat Kohanim, the Priestly Blessing, led by our beloved Rabbi Emeritus Herbert Brockman. At this year's Yom Kippur morning service Rabbi Brockman approached the Bimah, this time donning a protective facemask, as he prepared to ensure the continuity of our connections with our loved ones and other virtual participants. I pray that this tradition continues for many New Years to come.

Giving contemporary context to the ritual, Rabbi Brockman brought us back to our founders, who 180 years ago, named our congregation "Mishkan Israel", literally "tabernacle of Israel", as they established a sacred community in a new land. While these men and women were unable to immediately erect an edifice to house their congregation, they took up their mission, first in an apartment above a furniture store, and later in reclaimed houses of worship, until they could build for their descendants a more permanent sacred place. Nevertheless—even as they could

*Continued on page 8...*

## CANTOR'S NOTES *continued...*

Through all of this we still need to maintain a sense of humor. Besides, humor has always been one of the most wonderful defining traits of the Jewish experience. This year, instead of saying "Next year in Jerusalem!" we are saying, "Next Year in the Sanctuary"!

Due to the COVID pandemic we were not able to have our Cantor's Concert Fundraiser in the Spring. Instead, we are having it on Saturday, November 14th at 7 PM. We have been doubly blessed at still being able to have the most talented Mark Berman headlining the Concert. In case you do not recall, Mark Berman and his brothers grew up in CMI and ran down the halls just like all your children. Check our website if you would like more details about Mark but suffice to say Mark is a brilliant musician who will not fail to thrill and move your soul. Your Cantor may also have a surprise up his sleeve as well, so you will just have to be there! This is a Fundraiser for our CMI community. CMI will be celebrating its 180th milestone, and the pandemic has hit CMI very hard and we are doing all we can to keep it going so we are there for you when we can finally re-open the doors. We cannot do it without your help, so please join our Fundraiser and be part of the solution to send CMI forward into the next 180 years!

I would like to close with a bit of learning from "The Cantor's Corner."

**Missinai tunes:** This word has been around for a long time to describe our most favorite tunes and familiar tunes we hear in services, like the Bar'chu and Sh'ma, Kol Nidre on Yom Kippur, Avinu Malkeinu! Missinai means "from Sinai", so does that mean these tunes were handed down on Mount Sinai to Moses as well? Not quite. The term Missinai apparently dates back to 11th Century Europe. Melodies evolved among the Jews of the Rhineland in Western Germany, which were to become the traditional "Nusach Hat'filah," the prayer tunes for every occasion of Worship: morning, noon, and night, Sabbath and weekday, Festival and High Holy Days. These are the basis of modes and melodies that came over from Europe when our ancestors emigrated to the United States. We see their development from the standpoint of each country where Jews lived, and they way they

adapted the tunes they heard to prayers. We don't only have Jews from Western Europe, but Eastern Europe and their melodies were different as well. Today we have Jews from all parts of the globe in the United States and with them comes their own Missinai tunes... so does that mean, "What is Jewish Music?" Since we have no recordings of music from the beginning of the Diaspora we can only go on what we hear today and the most accurate answer is, there is no real Jewish Music. It is an amalgam of tunes from wherever Jews lived and we have lived all over this big wide world, including Asia! That is a wonderful thing! You Cantor has an endless smorgasbord of music before him that is ever evolving and dates back many centuries. It is a learning experience that would take many lifetimes to absorb. When I was in Cantorial School I was struck by the fact that you could fill buildings with all the music that has been written by Cantors, Rabbis and Jewish Composers. It was one of those, "my head is going to explode" moments. Fortunately my head is still intact and I will always be a perpetual student. Yet, isn't that what it means to be a Jew?

## 2020-2021 CHAI APPEAL

It is with immense gratitude that we acknowledge those families who as of this publication have responded to the menu of additional giving opportunities with a commitment above their standard dues and to the holiday appeal.

### **Our Pacesetters:**

Michael Dimenstein & Hedda Rubenstein  
Judith Hahn\*\*

James Horwitz & Sandra Allison\*

Jerome & Roslyn Meyer\*\*

Larry Schaefer & Lina Lawall

Jerome & Cecelia Serling

Mark & Judith Sklarz

\*Double Chai

\*\*Torah Circle

### **Additional Gifts:**

Floyd & Letty Caplan, Bernice Giskin, Saul & Sonya Goldberg, Benjamin & Maria Kahn, Dalton King & Michele Abrams, Al Klevorik & Susan Bender, Priscilla Jencks, Joel & Lucinda Kramer, Jennifer Levin-Tavares, J. Lance Lichtor, Judith Schwartz (z'l), Jeffrey Smith & Edith Rotkopf, Rabbi Steve & Caryl Steinberg



## NURSERY SCHOOL NEWS

**Susan Witten Nason**  
**Early Childhood Director**

We are pretty well adjusted to our new 'normal' here at school.

The kids are so adaptable and cooperative with all our new policies and requirements, not the least of which is mask wearing.

I always tell parents that change is usually harder for the adults than children, and it is so true.

We will spend November learning about Thanksgiving and sharing what we are thankful for.

There is so much to be thankful for!

In December we will be busy learning about Hanukkah through stories, songs, and lighting the menorah.

We wish everyone a Happy Hanukkah, and a Happy, Healthy New Year, (from our mouths to God's ears, as my Bubbe used to say!)

# TOT SHABBAT

**Friday, November 6**  
**5:30 PM**

**Friday, December 4**  
**5:30 PM**

Join Cantor Giglio  
 And Early Childhood Director  
**Susan Witten Nason** for this celebration of  
 Shabbat with  
**prayers, song and stories.**

Tot Shabbats are designed for families with children age  
 6 years and under and are open to the community

CMI • 785 Ridge Road Hamden, CT 06517 • 203-288-3877 • www.cmihamden.org

## NOVEMBER B'NAI MITZVAH



Lillian Miller  
 November 7, 2020  
 Daughter of Jordon & Elise Miller



Lilly Geddes  
 November 14, 2020  
 Daughter of Victoria DaRe



Sydney Geddes  
 November 14, 2020  
 Daughter of Victoria DaRe

Vikram Kent  
 November 21, 2020  
 Son of Philip & Nagasree Kent

## ANNUAL CHANUKAH LATKE SALE

A fundraiser for the religious school and no muss - no fuss  
 frozen, easy to serve latkes for all of your holiday  
 celebrations!!

24 Latkes/Box  
 \$15/Box • \$25/Two Boxes  
 All orders are due December 2nd

Latkes must be picked up at CMI on Sunday, December 13<sup>th</sup>  
 starting at 10:00 a.m.  
 Plan to participate in our drive-thru Mitzvah Mall when  
 you pick up your latkes.  
 More details to come!

CMI • 785 Ridge Road Hamden, CT 06517 • 203-288-3877 • www.cmihamden.org

## JCARR

### Immigrant Families Coping with COVID

The Jewish Community Alliance for Refugee Resettlement (JCARR) has successfully resettled four refugee families from the Democratic Republic of Congo, Syria, and Iraq, and we are assisting with support for an asylum-seeking family from Angola, as a co-sponsor with Integrated Refugee and Immigrant Services (IRIS), the main refugee agency in Connecticut.

JCARR recently received a Kraus Immigration Justice Mini-Grant of \$5,000 to support vulnerable children during the Covid-19 pandemic. The Kraus grant will enable JCARR to assist three immigrant families, with a total of ten children, who are struggling during the Covid-19 crisis. The funds will be used: 1) to bolster the families' access to high-speed internet to support the children's education while school is conducted partly or wholly online; 2) to buy a set of ESL materials designed for specific grade levels; and 3) to select and train tutors to work individually with each child who needs assistance, and 4) to provide stability by helping the families meet emergency needs at a time of reduced income due to the pandemic. While JCARR's goal is to help our families become self-sufficient, we consider it our responsibility to provide an educational and financial safety net for them during this crisis.

JCARR's lead ESL tutor shared this comment: "Research has shown that learning is less cognitively taxing and more permanent when gained through books and paper as opposed to screens. ("Why the Brain Prefers Paper" Scientific American November 2013 Vol. 309 Issue 5 pp. 48-53) "This is why I am grateful to the Kraus Grant for enabling us to put appropriate reading materials into the hands of JCARR students, their parents, and their tutors."

Donate online at <https://jewishnewhaven.org/refugee-resettlement/give>. Or, send checks payable to The Jewish Federation, with JCARR in the memo line, Attention: Amy Holtz, 360 Amity Road, Woodbridge, 06525. We greatly appreciate your support!

## CONNECT

*"Not everything that is faced can be changed.  
But NOTHING can be changed until it is faced."*

James Baldwin

This year has shaken most of us to the core. Especially disturbing are the police violence, health care disparities and other forms of institutional racism laid bare by the pandemic. We wonder what we can do, but we must do something. As Elie Wiesel has said: "We must take sides. Neutrality helps the oppressor, never the victim. Silence encourages the tormentor, never the tormented. Sometimes we must interfere. When human lives are endangered, when human dignity is in jeopardy, national borders and sensitivities become irrelevant. Wherever men and women are persecuted because of their race, religion, or political views, that place must - at that moment - become the center of the universe."

In keeping with that spirit, and with the meaning of Yom Kippur – when we repent and reflect on our lives in the past year and our hopes and intentions for the year ahead – CONNECT's Core Team offered a workshop about race on the holiday. More than 40 CMI members joined together to discuss *White Privilege: Unpacking the Invisible Knapsack*, by Peggy McIntosh. Written in 1988, this paper is sadly relevant today.

McIntosh, an American feminist, anti-racism activist, scholar, speaker, and Senior Research Scientist of the Wellesley Centers for Women, conceived of the knapsack metaphor when she was studying male privilege; she quickly realized how well it also related to white privilege. "White privilege is like an invisible weightless knapsack of special provisions, maps, passports, codebooks, visas, clothes, tools, and blank checks," she has said.

Like McIntosh herself, most of us grow up as unconscious beneficiaries of the knapsack. "I was taught to see racism only in individual acts of meanness, not in invisible systems conferring dominance on my group," she said.

*Continued on page 15...*

## PRESIDENT'S MESSAGE

*continued...*

not pray in a proper sanctuary, their Mishkan allowed them virtual and meaningful participation in and access to religious, social and educational life.

At this milestone in our long history, we are blessed to have a synagogue building of great beauty and historical significance. Throughout the months that our 60-year old building has been closed to congregational activity, our office staff and Oscar Hernandez, who provides exceptional maintenance support, have been attending to CMI's business and physical needs. While we have worshiped virtually from our personal Mishkanim, the level of behind the scenes activity at our synagogue has only been heightened.

It takes a combination of dedicated staff, volunteers and charitable donations to sustain our home base. This support enabled us to thoroughly clean heating and air conditioning ductwork and replace filters in preparation for the reopening of our CMI Nursery School and Daycare Center. We worked on cleaning and polishing our many square feet of floor space, and repainted common areas. The social hall ceilings and floor, damaged by last year's storms, have been repaired. The rotunda roof has received some well needed repairs, and damaged trees on our grounds have been trimmed or removed.

In our kitchen that is so important to Life Is Delicious and to the receptions and social events we hope will soon return to CMI, the CMI Brotherhood of Men and Women has generously replaced the dishwasher, and the hood over our oven and range is now functioning properly.

Our Pe'ah Garden team has remained dedicated to supporting food security in our community with the harvest of crops it has lovingly planted and donated. Our volunteers led cleanup of the garage, and updated its doors and electric service so we can safely store the harvest until it can be delivered to local food banks.

It is our fondest hope and fervent prayer to, in Rabbi Brockman's words, "one day soon be together in our beautiful beacon of home, love and justice, as it welcomes us back into its loving arms". Let us say Amen.

## CMI LIVESTREAMS SERVICES

We livestream services so that members and friends may enjoy services and the holidays. Regular services are available for viewing on your computer or mobile device. Simply go to <http://cmihamden.org/worship/livestream/>. Copies of past services are available under the Archived Videos tab. If you do take advantage of this service, please let us know of your experience.

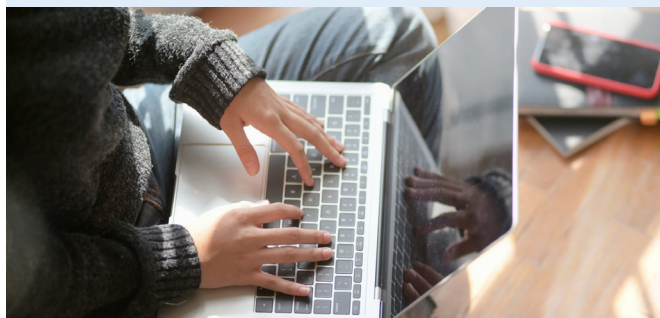
The implementation of livestreaming capability was made possible in part by a grant from the Jewish Home Building Fund Corporation.

## CONNECT WITH CMI ONLINE

Keep up-to-date with all CMI events. Check our website regularly at [cmihamden.org](http://cmihamden.org). You will find announcements, upcoming events, calendar, worship service times, and contact information. New members can join the congregation, and everyone can register for religious school and nursery school, pay your bills and make contributions.

We have several e-newsletters to keep our congregational family informed of upcoming events, recent passings, and school events. If you're not currently receiving our e-newsletters, contact Sarah at [slegassey@cmihamden.org](mailto:slegassey@cmihamden.org) so that you can get on the distribution list.

CMI is on Facebook. Click the icon on our website or go to <http://www.facebook.com/cmihamden>. You'll want to "like" us.







**Chanukah Blessings**

The following is the order of Service for each night: (1) light the shamash (the serving candle) (2) recite the Chanukah blessings (3) light the candles (4) recite one of the following readings each day. Place the candles right to left, and light them with the shamash left to right.

**Chanukah Blessings  
(recited each night)**

**Blessing over the candles:**

בָּרוּךְ אַתָּה יְיָ אֱלֹהֵינוּ מֶלֶךְ הָעוֹלָם אֲשֶׁר קִדְּשָׁנוּ בְּמִצְוֹתָיו וְצִוָּנוּ לְהַדְלִיק נֵר שֶׁל חֲנֻכָּה.

*Baruch atah, Adonai Eloheinu, Melech haolam, asher kid'shanu b'mitzvotav v'tsivanu l'hadlik ner shel Chanukah.*

Blessed are You, Adonai our God, Sovereign of all, who hallows us with mitzvot, commanding us to kindle the Chanukah lights.



**Blessing for miracles:**

בָּרוּךְ אַתָּה יְיָ אֱלֹהֵינוּ מֶלֶךְ הָעוֹלָם שֶׁעָשָׂה נִסִּים לְאַבוֹתֵינוּ בַּיָּמִים  
הָהֵם בַּזְּמַן הַזֶּה.

*Baruch atah, Adonai Eloheinu, Melech haolam, she-asah nisim laavoteinu v'imoteinu bayamim haheim baz'man hazeh.*

Blessed are You, Adonai our God, Sovereign of all, who performed wondrous deeds for our ancestors in days of old at this season.

**Shecheyanu (Blessing for joy)**

*(for first night only)*

בָּרוּךְ אַתָּה יְיָ אֱלֹהֵינוּ מֶלֶךְ הָעוֹלָם שֶׁחַיָּנוּ וְקִיְּמָנוּ וְהִגִּיעָנוּ לַזְּמַן הַזֶּה.

*Baruch atah, Adonai Eloheinu, Melech haolam, shehecheyanu v'kiy'manu v'higianu laz'man hazeh.*

BLESSED are You, Adonai our God, Sovereign of all, for giving us life, for sustaining us, and for enabling us to reach this season.

# November 2020

1 10:00 a.m. Religious School	2	3 4:00 p.m. Hebrew School	4	5	6 5:30 p.m. Tot Shabbat 6:00 p.m. Evening Service	7 9:00 a.m. Torah Study 10:30 a.m. Morning Service celebrating the Bat Mitzvah of Lillian Miller
8 10:00 a.m. Religious School 10:00 a.m. Brotherhood Book Club with Session Facilitator: David Chevan	9	10 4:00 p.m. Hebrew School	11 6:00 p.m. Executive Committee Meeting 7:00 p.m. Board Meeting	12	13 6:00 p.m. Family Service	14 9:00 a.m. Torah Study 10:30 a.m. Morning Service celebrating the Bnot Mitzvah of Lily & Sydney Geddes 7:00 p.m. Cantor's Concert
15 10:00 a.m. Religious School	16	17 4:00 p.m. Hebrew School	18 6:00 p.m. Executive Committee Meeting 7:00 p.m. Board Meeting	19	20 6:00 p.m. Evening Service	21 9:00 a.m. Torah Study 10:30 a.m. Morning Service celebrating the Bar Mitzvah of Vikram Kent
22 10:00 a.m. Religious School	23	24 No Hebrew School	25 7:00 p.m. Executive Committee Meeting	26 Thanksgiving Office and School Closed	27 Office & School Closed 6:00 p.m. Evening Service	28 9:00 a.m. Torah Study
29 No Religious School	30					

# December 2020

					1 4:00 p.m. Hebrew School	2	3	4 5:30 p.m. Tot Shabbat 6:00 p.m. Evening Service	5 9:00 a.m. Torah Study 10:30 a.m. Morning Service
6 10:00 a.m. Religious School	7	8 4:00 p.m. Hebrew School	9 7:00 p.m. Executive Committee Meeting	10 Chanukah First Candle	11 6:00 p.m. Chanukah Family Service	12 9:00 a.m. Torah Study 10:30 a.m. Morning Service			
13 9:30 a.m. Tot Program - Chanukah 10:00 a.m. Torch Run & Drive through Mitzvah Mall	14	15 4:00 p.m. Hebrew School	16	17	18 Chanukah - 8th Day 6:00 p.m. Evening Service	19 9:00 a.m. Torah Study 10:30 a.m. Morning Service			
20 10:00 a.m. Religious School 10:00 a.m. 4th/5th Grade B'nai Mitzvah Family Lifecycle Program	21	22 4:00 p.m. Hebrew School	23 7:00 p.m. Board Meeting	24	25 Office & School Closed 6:00 p.m. Evening Service	26 9:00 a.m. Torah Study 10:30 a.m. Morning Service			
27 No Religious School	28	29 No Hebrew School	30	31					

**NOVEMBER 6**

Louis Arnopolsky  
 Arnold Baltimore \*  
 Sylvia Beckerman  
 Thelma Bolsky  
 Frances Bolton \*  
 Eva Chetrick \*  
 Jean Cohen \*  
 Irene Lesnie Cohn \*  
 Roberta Danza \*  
 Joseph Eisenbuch  
 Virginia Fineberg  
 Saul Finkelstein  
 Lena Wrubel Greenbaum \*  
 Beatrice Hahn  
 Caroline G. Herrmann \*  
 Julia Jacobson \*  
 Nell King  
 Paula Kirsch  
 Ruth Klevorick  
 Esther Labacz  
 Isaiah Lambert \*  
 Dr. Bernard Lipin \*  
 I. Albert Lipman  
 Dr. Morton J. Loeb \*  
 Cantor Bertram Naden  
 Frances Polak \*  
 Elinor Pollock  
 Mollie Rattner  
 Marvin Rosenbaum  
 Abraham E. Rubington \*  
 Murray B. Shemitz \*  
 Howard J. Spodick  
 Esther Steiglitz \*  
 Rosalyn Vener  
 Rebecca Wilensky

**NOVEMBER 13**

Bertram B. Adler \*  
 Bella Averbuch  
 William Beckerman  
 Abraham Berger \*  
 Edward Bernstein  
 Eva B. Black \*  
 Stanley Brown  
 Robert Carberry  
 Joel Cogen  
 Dr. Jacob Benjamin Fishman \*  
 Marion Goldberg  
 Milton W. Grossman \*  
 Judge Charles Henchel \*  
 Rita D. Hershenson \*  
 Jean Sherres Kahn  
 Anne Kasterbaum  
 Anne Keegan  
 Charles Kleiner \*  
 Florence Klugman  
 Alan Lakin  
 Arthur Lesser  
 Norton M. Levine \*  
 Herbert Daniel Lewis \*  
 Benjamin Lipka  
 Frieda Lonard  
 Sylvia Mangen  
 Evelyn Newman  
 Morton Proscio \*  
 Greta Puklin \*  
 Bernard I. Schub  
 Aramina Schwartz \*  
 Jack Shapiro  
 Reuben Shapiro  
 Esther K. Silverman \*  
 Esther Soffer  
 Hermine Swimmer \*  
 Edna May Thalheimer \*  
 Jacob B. Ullman \*  
 Adele Ida Yudkin  
 Minnie B. Yudkin \*  
 Elsbeth Zabin

**NOVEMBER 20**

Mollie Aronson  
 Anna S. Baskin \*  
 Jane Bender  
 Harriet F. Berger \*  
 Robert Allen Caesar \*  
 Gertrude Caplan  
 Sylvia Greenbaum Cohen \*  
 Benjamin Dunn  
 Sidney Eder  
 Lauren V. Farber \*  
 Rhoda Weiner Feldman \*  
 Christopher Rodney Gennett  
 Robert Goldberg  
 Esther G. Goldstein \*  
 Barbara Goodman \*  
 Frances Gordon  
 Nathan C. Herz \*  
 Rose Altschuler Hozer  
 Rose Johnson \*  
 Charles D. Keegan  
 Edward Phillips Levine \*  
 Pauline Lichtenstein \*  
 Shirley K. Lichtman \*  
 Bruin Lipman  
 Marcia Margolis  
 Olga Nobleman  
 Ray Olderman  
 Rose Proctor  
 Sheila L. Rauch \*  
 Sadie S. Robin \*  
 Ruth Rubington \*  
 Sarah Sasson  
 Lillian Siskin  
 Jean Solomon \*  
 Solomon J. Stein \*  
 Daniel A. Steinbach \*  
 Florence Amelia Wallack \*  
 Marion Ullman Weinstein \*  
 Paul D. Wingate \*

**NOVEMBER 27**

Robert Ackerman  
 Isabel Baar  
 Eva Berkowitz  
 Dora Bostin \*  
 Theresa B. Cahn \*  
 William Cohen  
 David Ehrlich  
 Jenny Yudkin Enkelis  
 Alvin Evans  
 Bertram Frankenberg Sr. \*  
 Beatrice Franks  
 Arthur Giglio Sr  
 Max Goldfarb  
 Morris Harrison \*  
 Sara C. Heller  
 Matthew W. Kaminsky  
 Hilda Kaminsky \*  
 Max Kern \*  
 Bessie Kraft  
 Clara L. Langrock \*  
 Ruth Hahn Meyer  
 Trudy Miller  
 Michael Milles  
 Anna Montlick \*  
 Dr. Burness E Moore  
 Rose O. Osterweis \*  
 Martin Pripstein  
 Flora Rothchild \*  
 M. Alan Rubin  
 Irwin Schoen  
 Tesse D. Shemitz \*  
 Louis Soffer  
 William P. Spear \*  
 Benjamin H. Spier \*  
 Richard M. Stiner \*  
 Lou Stone  
 George Swirsky \*  
 Abraham Weissman \*  
 Harry Jay Wexler  
 Hyman Zimmer

*In Sympathy*

Geraldine Katz on the passing of her mother,  
 Pearl Carmasin

Heidi Parlato on the passing of her mother,  
 Betty Puklin

*In Memoriam*

Judith Schwartz

*May her memory be for a blessing*

**DECEMBER 4**

David Steven Braverman  
 Bertha Brown \*  
 Abraham S. Brown  
 Fay Ehrlich  
 Samuel Evans  
 Eleanor Freedman  
 Seymour M. Golden \*  
 Rose Dorfman Goldhamer \*  
 Milton Heller  
 Don Hellerman  
 Phyllis Kauffman \*  
 Mabel Goodman Kaufman \*  
 Anne Ketover  
 Benjamin Klatsky  
 Robert Klugman  
 Mona V. Maizell \*  
 Doris Parmet  
 Marjorie Rogowski \*  
 Bernice Felix Schnitman \*  
 Beatrice Miller Shapiro  
 Celia Shukovsky  
 Morris Silverberg  
 Henry Stinow \*  
 Irwin Weill  
 Howard M. Weinick \*  
 Russel Sunny Weinstein  
 Marian L Young  
 Marvin Yudkin  
 Freda Zanker

**DECEMBER 11**

Alfred Barnston  
 Mae Berman  
 Rhoda Lipofsky Cahn  
 Benjamin Davis  
 Sarah Feinstein  
 Louis Goldberg  
 Enid Frank Goldsmith  
 Belle Gordon  
 David Grossman  
 Tz'vi-Hersh Ben-Avraham Hanina  
 Ilse Horn  
 Mr. Philip Horowitz  
 George C. Howard \*  
 Estelle Levine Jacobs  
 Louis Kahn  
 Mae Proscio Katz \*  
 William B. Koufman \*  
 Joseph Kugler  
 Bessie Lazarus \*  
 Gale M. Leibowitz  
 Celia C. Levine \*  
 Stanley Lichtenstein \*  
 Rosa F. Lyons \*  
 Aaron Mack  
 Samuel H. Montlick \*  
 Nathan Passell \*  
 Lawrence Paul \*  
 Ernest Paul  
 Morton Pechter \*  
 Marion L. Perloth \*  
 Edward A. Reich \*  
 Betty Seltzer  
 Herman Shukovsky  
 Samuel Silverman \*  
 Rabbi Edgar E. Siskin \*  
 Leo Sklarz \*  
 Louis M. Sonnenberg \*  
 Bernard P. Spear \*  
 William Steckerl  
 Edward Stern  
 Herman Tenin  
 Matthew E. Ticotsky  
 Philip S. Ticotsky  
 Jeanne Tiven  
 Barney Trotsky \*

**DECEMBER 18**

Muriel Aaron \*  
 Sadie Ackerman  
 Leon Aries  
 Harry Baskin \*  
 Sylvia Bailey Berkowitz  
 Joel Bolsky  
 Ethel Donath  
 Max Drabkin  
 Herman Epstein \*  
 Benjamin Gittler  
 Gertrude Gittleson \*  
 Hattie Glasner  
 James R. Glassner \*  
 Bernard Goldman  
 Clara Phillips Goodhart \*  
 Albert L. Grodd  
 Mae Maisie Hammer  
 Herbert (Herb) Horowitz  
 Mitchel Jones  
 Yefim Khait  
 Mae Reinstein Klatsky  
 Rose Kryger  
 Joshua Loewenbaum  
 Susan Losher  
 Nancy Mack  
 Michael Myers \*  
 Mildred Orzack  
 Benjamin Pious  
 Sadie Rotberg Rifkin \*  
 Barbara Fisher Rosenthal \*  
 Leopold Schoenberger \*  
 Ann Sklarz  
 Viola Sklaver  
 Lester B. Weiss

**DECEMBER 25**

Jennie Rogowsky Alderman  
 Jack Baltimore \*  
 Dr. Merrill Abner Baratz \*  
 Irving Bleich  
 Sara A. Brown  
 Harriet K. Cahn \*  
 Ethel Horn Caminear  
 Sadie Caplan  
 Richard Cohen \*  
 Edith Koosis Donen  
 Alice Enson  
 Annie Evans  
 Hattie J. Goodman \*  
 Louis Green \*  
 Abe Harris  
 Julius Hartenstein \*  
 Eleanor Jacobs  
 Howard Kaplan  
 Samuel Kasterbaum  
 Frances Landowne  
 Robert E. Lapides \*  
 Meyer Leshine  
 Aida Y. Mettler \*  
 James O'Brasky \*  
 Dorothy Rosenberg  
 Marvin L. Rosenfeld  
 Bernice Rubinstein  
 Elaine Sampliner  
 Irwin Mellion Siegel \*  
 Hon. Arthur J. Sills \*  
 Herbert Siperstein  
 Joseph Sklaver  
 Robert C. Spodick \*  
 Abraham Louis Starin \*  
 Nancy Weiner Stiner \*  
 Carl Zelson  
 William Zwickler

“...who donates much to charity becomes the richer for it...”

Zohar iii 110b

## AUGUST 1, 2020– OCTOBER 1, 2020

### ENDOWMENT FUNDS:

(invested to generate annual income for specific purposes)

#### General Fund

Lisa & Lynn Frankes

**In Memory of**  
ROBERT FRANKES

#### Duhan Library Fund

George & Diane Lublin  
George & Diane Lublin

**In Memory of**  
JAMES DEFEO  
SYLVIA GOLDBAUM

#### Robert E. Goldberg Peace & Justice Fund

Elizabeth Koskoff

Bert & Martha Weisbart  
Bert & Martha Weisbart  
Bert & Martha Weisbart  
Bert & Martha Weisbart  
Bert & Martha Weisbart

**In Memory of**  
SUZI VARGA FELLER  
PHYLLIS WEISBART LITOFF  
DAYA WEISBART  
ETHEL WEISBART  
IRENE ELLEN LESNIE COHN

#### Benjamin Levine Scholarship Fund (RS)

George S. Levine

**In Memory of**  
MILTON STRAUSS

#### Dr. Louis H. Nahum & Stella K. Nahum Music Fund

Alan & June Sturtz

**In Memory of**  
WALTER LESNICK

#### Schaefer Family Fund

Michael Dimenstein &  
Hedda Rubenstein

**In Honor of**  
MARJI LIPSHEZ-SHAPIRO'S  
30 years of service to the ADL

#### Abraham S. & Helen Ullman Youth Fund

Andrew M. Ullman  
Andrew M. Ullman

**In Memory of**  
ABRAHAM S. ULLMAN  
SYLVIA L. ULLMAN

#### TARGET AREAS: (meant for immediate use of funds)

##### General

Bluma Lesch for Shana Tova wishes  
Robert & Maxine Wallace

with many thanks for providing high  
holiday services to the community  
which were wonderful

**In Appreciation of**  
CMI STAFF  
CANTOR GIGLIO  
RABBI IMMERMANN  
RABBI IMMERMANN  
LARRY & BETSY ROSENTHAL

Sunday AM Judaism Class

**In Honor of**  
RABBI STEVE STEINBERG for his  
Sunday Morning instruction

Michael Dimenstein & Hedda  
Hedda Rubenstein  
Stan & Bobbi Friedman

CYNTHIA & DANA ASTMANN'S  
5th anniversary  
MARTHA WEISBART'S  
milestone birthday

Ellen Landowne

Grandson, ADRIAN WERNER becoming  
a Bar Mitzvah

Norm & Marian Adams  
Bob & Irma Bachman  
Estelle Baltimore  
Estelle Baltimore  
Michael Dimenstein  
& Hedda Rubenstein  
Peter & Nancy Berdon  
Stuart & Hedy Bush  
Lisa Feldman  
Lisa Feldman  
Lisa Feldman  
Judi Hahn  
Brian Hasbrouck  
Brian Hasbrouck  
Ann Coleen Hellerman  
Paul Knapp  
Ruth Koizim  
Ruth Koizim  
Nancy Kramer  
Selma Krinick  
Ellen Landowne  
Lina Lawall & Larry Schaefer  
Philip & Sondra Lublin  
Howard A. Lurie  
Howard A. Lurie  
Nancy Moss-Racusin  
Marcy Nathman  
Judy Olian

Marilyn Rittner  
Joel & Lorraine Roseman  
David Samuels  
Harvey & Judith Schatten  
Harvey & Judith Schatten  
Harvey & Judith Schatten  
Harvey & Judith Schatten  
Harvey & Judith Schatten  
Jane Shapiro  
Jane Shapiro  
Jane Silva  
Jane Silva  
Jeffrey Smith & Edith Rotkopf  
Dr. Linda Waldman &  
Rabbi Howard Sommer

#### Building

Charles & Judith Naden

**In Memory of**  
ROBERT NADEN

#### Cemetery

Sheila Klein  
Ken & Ellie Levine  
Andrew & Maryann Postman  
Kenneth Winer

**In Memory of**  
SHIRLEY CHASIN  
SHIRLIE LEVINE  
ALAN POSTMAN  
LAWRENCE WINER

#### Hunger Fund

Brenda Arovas  
Brenda Arovas  
Brenda Arovas  
Brenda Arovas  
Bob & Irma Bachman  
Irving & Harriet Calechman  
Richard & Nedra Gusenburg  
Edith Heiger

**In Memory of**  
JOSEPH AROVAS  
SHIRLEY CHASIN  
ALFRED SIMON  
GRETA SIMON  
SONIA BROWN  
SHIRLEY CHASIN  
CHERYL SATIN GUSENBURG  
SHIRLEY CHASIN

Frederick J. Rosen  
Alan & June Sturtz

SUSAN E. ROSEN  
BERNICE LESNICK

---

**Library**

Allan Hillman & Penny Marcus

**In Appreciation of**  
CHUCK & JUDY NADEN with congratulations  
to LAURA & MASON

---

**Music**

Cynthia Jedynak

**In Appreciation**  
CANTOR GIGLIO and his kindness

Cynthia Jedynak  
Michael & Ellen Rosenthal  
Lina Lawall & Larry Schaefer

**In Memory of**  
SHIRLEY CHASIN, loving mother  
LARRY LAYCOB  
AUGUSTA LAWALL

---

**Social Action Fund**

Lydia Bornick  
Robert Bornick  
Bob, Tamara, Ben & Dan Epstein

**In Memory of**  
DENNIS BORNICK  
DENNIS BORNICK  
SANTO VITALE, beloved grandpa and GGPa

---

**SPECIAL FUNDS:**

**Herbert N. Brockman Rabbinic Endowment Fund**

Howard A. Lurie  
Mark & Judith Sklarz

**In Memory of**  
ROBERTA (BOBBI) LURIE  
SEYMOUR ZELLMAN

We would like to extend a special thank you to these members who contributed to the High Holy Day special Hunger Fund drive to help those in the community facing food instability.

Brenda Arovas  
Alan & Katherine Benard  
Lydia Bornick  
David & Kim Cohen  
Matthew & Michele Cohen  
Liza Comita & Simon Queenborough  
Rochele Cummings  
Michael Dimenstein & Hedda Rubenstein  
Jack & Harriett Fast  
Michael & Erika Forte  
Steven & Miriam Giskin  
Neil & Marlene Greenberg  
Sarah Greenblatt  
Benjamin & Maria Kahn  
Benjamin & Tammy Kleinman  
Meir & Barbara Kryger  
George & Diane Lublin  
Philip & Sondra Lublin  
Robert & Susan Nobleman  
Marc & Nancy Olins  
Jon & Leslie Redmond  
Marjorie Rosenthal  
Larry & Betsy Rosenthal  
Bea Sussman  
Richard Sussman & Nina Horowitz  
Milton & Joan Wallack  
Julie Wolf

---

**Rabbi Immerman's Discretionary Fund**

Peter Blasini & Nancy Yedlin  
Burton & Suzanne Finkel  
Stan & Bobbi Friedman  
Diane & George Lublin

**In Appreciation of**  
RABBI BRIAN IMMERMEN  
RABBI BRIAN IMMERMEN  
RABBI BRIAN IMMERMEN  
RABBI IMMERMEN & CANTOR GIGLIO

Cynthia Jedynak  
Linda Prosko  
Marjorie Weiner

**In Memory of**  
SHIRLEY CHASIN  
RHONDA KORFF  
MARGOT GOLD SAUNDERS



---

## DECEMBER WORSHIP SERVICES & STUDY

---

**SHABBAT VAYISHLACH**

Gen. 32:4-36:43

**Friday, December 4**

5:30 p.m. Tot Shabbat  
6:00 p.m. Evening Service

**Saturday, December 5**

9:00 a.m. Torah Study  
10:30 a.m. Morning Service

---

**SHABBAT VAYEISHEV**

Gen. 37:1-40:23

**Friday, December 11**

6:00 p.m. Chanukah Family Service

**Saturday, December 12**

9:00 a.m. Torah Study  
10:30 a.m. Morning Service

---

**SHABBAT MIKETZ**

Gen. 41:1-44:17

**Friday, December 18**

6:00 p.m. Evening Service

**Saturday, December 19**

9:00 a.m. Torah Study  
10:30 a.m. Morning Service

---

**SHABBAT VAYIGASH**

Gen. 44:18-47:27

**Friday, December 25**

6:00 p.m. Evening Service

**Saturday, December 26**

9:00 a.m. Torah Study  
10:30 a.m. Morning Service

---

## CONNECT *continued...*

The Yom Kippur workshop was just the start. The knapsack focuses on invisible, everyday situations that make being white the norm and benefit white individuals. After the election, the CMI team will offer a multi-part series on systems of institutionalized racism in the U.S. Tentatively called "CMI Series on Race & Racism: Deepening Our Understanding by Learning Together," you'll be hearing more about it soon!



**ROBERT E. SHURE, INC.**  
 — FUNERAL HOME —

Dedicated to the Dignity and Respect of Tradition.

543 George Street, New Haven, CT 06511

**Robert E. Shure**  
 Founder

203-562-8244  
[shurefuneralhome.com](http://shurefuneralhome.com)

**James M. Shure**  
 President

**TO OUR READERS**

If you use a service from one of our advertisers, please inform them that you are doing so because you saw their ad in the Bulletin.

If you would like to place an ad in the Bulletin, Contact Sarah Legassey at

**(203) 288-3877**

*Celebrating  
 Our 50th Anniversary!*



**TOWER ONE • TOWER EAST**  
*An Active Senior Living Community*

Contact Rebecca Goodman Olshansky  
 (203) 772-1816, ext. 250 [rebecca@towerone.org](mailto:rebecca@towerone.org)  
[www.towerone.org](http://www.towerone.org)



**Ear Nose and Throat**  
 Specialists of Connecticut

David I. Astrachan, M.D.  
 Craig S. Hecht, M.D.

**David I. Astrachan, M.D.**

Ear, Nose and Throat Medicine • Head and Neck Surgery

Phone 203.248.8409  
 Fax 203.281.2905  
[www.entct.com](http://www.entct.com)

**Larry Lazaroff**

**Arnold's Jewelers**

The North Haven Diamond Center

117 Washington Avenue  
 North Haven Shopping Center  
 North Haven, CT 06473



**Phone:** (203) 239-4291  
**Fax:** (203) 230-9287  
**Email:** [laztwo@aol.com](mailto:laztwo@aol.com)  
**Web:** [TheArnoldsJewelers.com](http://TheArnoldsJewelers.com)



# Benefit Congregation Mishkan Israel

Ask us about  
establishing a fund, trust or annuity  
to ensure CMI's future.

Charitable giving strengthens our Community  
and provides the donor with tax savings.

Jeffrey Hoos  
*Chair,  
Board of Trustees*

Jewish Foundation of Greater New Haven



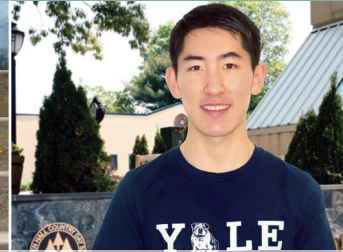
*All of us. One Foundation.*

Lisa A. Stanger, Esq.  
*Director*  
203 387-2424 x382  
lstanger@jewishnewhaven.org

## THE HAMDEN HALL EXPERIENCE: CREATING ENDLESS OPPORTUNITIES FOR OUR STUDENTS



Orly Richter, Class of 2020  
Brown University



Michael Lee, Class of 2020  
Yale University



Jasmine Johnson, Class of 2020  
UConn / Day of Pride Scholarship



Eduardo Pagliaro-Haque, Class of 2020  
Yale University

**VISITING OPPORTUNITIES:**  
Coffee and Campus Tours Sept. 17 / 9-10:30 a.m.  
Oct. 15 / 9-10:30 a.m.  
Open House Nov. 1 / 1-3 p.m.  
Or call 203.752.2610 to schedule a private tour.



### HAMDEN HALL COUNTRY DAY SCHOOL

Educating students in PreSchool through Grade 12  
1108 WHITNEY AVE. HAMDEN, CT. 203.752.2610  
WWW.HAMDENHALL.ORG TRANSPORTATION AVAILABLE

MONUMENTS ERECTED IN ALL CEMETERIES

# *NOLAN'S HAMDEN MONUMENT COMPANY LICHTENSTEIN COMPANY*

323 WASHINGTON AVE., HAMDEN, CT 06518

(203) 288-8486 • (203) 287-1593

CT Toll Free Only (800) 852-8865 • Fax (203) 287-1593

JOHN R. NOLAN  
MICHAEL F. NOLAN

nolansmonuments@att.net

ADVERTISING SUPPORT

# Weller Funeral Home

The oldest Jewish family funeral home serving the Jewish community of greater New Haven with dignity since 1881

## Danny Weller Klein

Fourth generation funeral director at Weller Funeral Home

493 Whitney Avenue, New Haven, CT 06511  
 203-624-6912      www.wellerfuneralhome.com

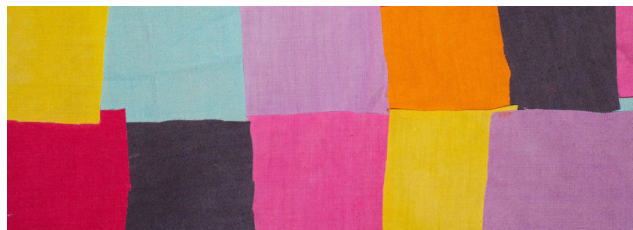
**Torah Study**  
 Rabbi Immerman's weekly Shabbat morning Bible Study meets Saturday mornings at 9:00 a.m. – 10:00 a.m.  
 No prior knowledge is required.



**Intro to Hebrew**  
 Rabbi Steinberg's class will resume to meet once the synagogue can physically open. Registration will be required.

**Intro to Judaism**  
 This class is for beginners to learn about the basic elements of the Jewish tradition, its history, theology and observances, both surrounding the life-cycle of a Jew and the yearly festivals. Registration is required.

**Intermediate Hebrew Group**  
 The group studies biblical Hebrew grammar and vocabulary. If interested, contact Lisa Marcus at lmarcusphd@gmail.com



## CHEVRA HANDS

Join us in creating shawls for those in our congregation who might find comfort in our congregational expression of caring. Chevra Hands makes quilts and blankets to welcome our newest members or provide loving warmth to those who are ill. We knit and crochet and have been quilting together creating lap quilts and baby blankets. No experience necessary, just a sense of humor, patience and a willingness to learn. For further information contact Sue Millen at smillen179@sbcglobal.net or Lina Lawall at lalawall250@gmail.com

# ADULT EDUCATION AT CMI



For more information contact Sarah Legassey at 203-288-3877 or slegassey@cmihamden.org

**CMI**  
 785 Ridge Road  
 Hamden, CT 06517  
 203-288-3877  
 www.cmihamden.org

Brotherhood  
of Men and  
Women

at



## David Chevan Selects The Ghetto Swinger for First Read in the Sunday Morning Book Club

### Sunday Morning Book Club

CMI Brotherhood of Men and Women (BMW) has adopted and expanded the theme for books in the Sunday Book Club. We are focusing on books that explore the range and depth of the Jewish experience. CMI's BMW invited scholars to facilitate discussions in the book club sessions. Each scholar has chosen the book to be featured in his or her session of the book club.

CMI members can participate in one or more of the sessions. In order to facilitate meaningful discussions, each session is limited to 25 participants. All book club sessions will be on Zoom until CMI reopens for services and religious school.

### The Ghetto Swinger



The book selection for the first session on Sunday, November 8<sup>th</sup> is:

### The Ghetto Swinger

Known as Germany's most famous swing guitarist, Coco Schumann has played with jazz greats like Marlene Dietrich, Ella Fitzgerald, Dizzy Gillespie, and Louis Armstrong. Yet until the 1980s none of his colleagues knew of his experience in the Holocaust. Coco didn't speak about "it." Not even his closest friends knew what had happened to him except for the barest of facts that Coco volunteered. This is the incredible story of jazz star Coco Schumann who played in Auschwitz for his life. Click [here](#) for sample reviews of the book.

Session Facilitator: David Chevan,  
Professor of Music,  
Southern Connecticut State  
University

Date: Sunday, November 8, 2020  
10 am- noon on Zoom



Registration Fee which includes the book:  
BMW Members- \$10/person  
BMW Non-Members \$20/person

Please complete the registration form located [here](#) to enroll in the first session.

Contact Us

Brotherhood of Men and Women  
Congregation Mishkan Israel  
785 Ridge Road  
Hamden, CT 06517  
(203) 288-3877

## CONGREGATION MISHKAN ISRAEL ANNUAL CHANUKAH TORCH RUN



Sunday, December 13 • 9:15 AM

Let gather at East Rock Park parking lot at 9:15 a.m. and run to Mishkan Israel (a 2.5 mile downhill course) carrying the authentic torch found in Modiin, the town where Chanukah originated. All ages welcome! PreK-6<sup>th</sup> grade must be accompanied by an adult. RSVP for the Torch Run to Sarah in the CMI office at [slegassey@cmihamden.org](mailto:slegassey@cmihamden.org) or (203) 288-3877. We are unable to provide any transportation this year.

## DRIVE –THRU MITZVAH MALL



Sunday, December 13, 2020  
10:00 AM

Instead of purchasing gifts at the mall, why not "buy" a warm meal for a person experiencing homelessness, clothing for a poor family or toys for hospitalized children in your friend's relative's or children's teachers' name? Participants experience the gratifying gift of charity (tzedakah) for the holidays as they learn about and donate to non-profit agencies. It's a hassle free way to shop that helps those in need. Parents and congregants are encouraged to participate in this event. Additional details to come!

The Mitzvah Mall, co-sponsored by the Social Action and Religious Education Committees, is an alternative gift fair. The vendors are non-profit organizations and charities.

CMI • 785 Ridge Road Hamden, CT 06517 • 203-288-3877 • [www.cmihamden.org](http://www.cmihamden.org)

UPCOMING EVENTS

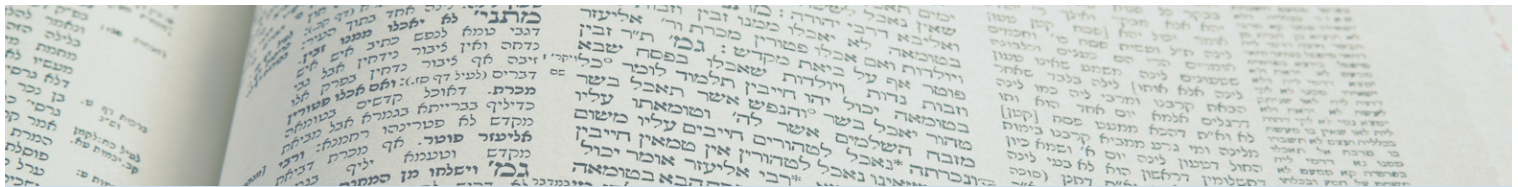
Next Bulletin Deadline 12/1/20

**Time Value Data**  
**Deliver No Later than November 1**

**THE CONGREGATION MISHKAN  
ISRAEL BULLETIN**

September/October 2020 Series 105, #2  
THE CONGREGATION MISHKAN ISRAEL  
785 Ridge Road, Hamden, CT 06517  
Phone: (203) 288-3877 Fax: (203) 248-2148  
<http://cmihamden.org>

- Rabbi Brian P. Immerman** x236  
[rabbi@cmihamden.org](mailto:rabbi@cmihamden.org)
- Rabbi Emeritus Herbert N. Brockman, Ph.D. D.D.** x243  
[cmirabbi@cmihamden.org](mailto:cmirabbi@cmihamden.org)
- Cantor Arthur Giglio** x244  
[cantorg@cmihamden.org](mailto:cantorg@cmihamden.org)
- Merav Canaan**, Temple Administrator x241  
[mcanaan@cmihamden.org](mailto:mcanaan@cmihamden.org)
- Michelle Goldstein**, Religious School Director x237  
[mgoldstein@cmihamden.org](mailto:mgoldstein@cmihamden.org)
- Alex Forte**, Director of Youth Activities  
[mityor@cmihamden.org](mailto:mityor@cmihamden.org)
- Susan Witten Nason**, Early Childhood Director x245  
[sperry@cmihamden.org](mailto:sperry@cmihamden.org)
- Michael Dimenstein**, President  
[president@cmihamden.org](mailto:president@cmihamden.org)



## NOVEMBER WORSHIP SERVICES & STUDY

### SHABBAT VAYIERA

Gen. 18:1-22:24

#### Friday, November 7

5:30 p.m. Tot Shabbat  
6:00 p.m. Evening Service

#### Saturday, November 8

9:00 a.m. Torah Study  
10:30 a.m. Morning Service celebrating the  
Bat Mitzvah of Lillian Miller

### SHABBAT TOLDOT

Gen. 25:19-28:9

#### Friday, November 20

6:00 p.m. Evening Service

#### Saturday, November 21

9:00 a.m. Torah Study  
10:30 a.m. Morning Service celebrating the  
Bar Mitzvah of Vikram Kent

### SHABBAT CHAYEI SARAH

Gen. 23:1-25:18

#### Friday, November 13

6:00 p.m. Evening Family Service

#### Saturday, November 14

9:00 a.m. Torah Study  
10:30 a.m. Morning Service celebrating the  
B'Not Mitzvah of Lilly & Sydney Geddes  
6:00 p.m. Cantor's Concert

### SHABBAT VAYEITZEI

Gen. 28:10-32:3

#### Friday, November 27

6:00 p.m. Evening Service