



# The Congregation Mishkan Israel

*More than a place. We're a community.*

March/April 2021

Series 105 Number 4

you're invited to a  
second night  
remote community

## Passover Seder



SUNDAY, MARCH 28 • 6:00 PM



**Passover Remote Morning Service**

Sunday, March 28 at 10:30 AM



**Passover Remote 7<sup>th</sup> Day with Yizkor**

Saturday, April 3 at 10:30 AM

# MARCH & APRIL 2021





## PASSOVER

SUNDAY NIGHT, MARCH 28 at 6:00 p.m.

Join the CMI community for our annual second night seder! To keep everyone safe, we will again have our seder online. Even though we cannot join together in the social hall this year, join Rabbi Immerman and Cantor Giglio for an interactive and fun-filled community seder. All are welcome to join us - we'll bring the haggadah, the music and the seder plate, you bring your own food, wine and traditions. We will read the haggadah together through the start of dinner, and encourage you to finish on your own with either your own haggadah or our prayer sheet which you can find on the CMI website.

Our seder is free and open to all; please register in advance on our website, [cmihamden.org](http://cmihamden.org)

This year we are excited to offer Passover meals prepared by **The Crown Market**. Please visit our website, [cmihamden.org](http://cmihamden.org) for details, as well as the enclosed order form.

## PROTOCOL FOR MI SHEBERACH (HEALING PRAYER) LIST

To add or delete a name to our Mi Sheberach (healing prayer) list that is read at services please call Rabbi's office at (203) 288-3877. You must have permission from the individual to have their name read in public. (There is always the Hebrew option as well.) Names will remain on the list for one month unless renewed or requested to be deleted. If you join us for services you can add a name that evening by signing in with the greeter prior to the beginning of services.

# TOT SHABBAT



March 6, 27 &  
April 24  
10:30 AM

Join CMI staff members for this celebration of Shabbat with prayers, song and stories.

Tot Shabbats are designed for families with children age 6 years and under and are open to the community

CMI • 785 Ridge Road Hamden, CT 06517 • 203-288-3877 • [www.cmihamden.org](http://www.cmihamden.org)

## CMI Community 2nd Night Passover Seder

March 28  
6:00 p.m.



We are excited to be able to offer a special menu from **The Crown Market** for you to order Passover dinners. To view the menu and place your orders, please visit our website, [cmihamden.org](http://cmihamden.org). You may also order by calling the office at 203-288-3877 or by sending an email to Sarah at [slegassey@cmihamden.org](mailto:slegassey@cmihamden.org)

All orders **MUST** be placed by Tuesday, March 16. Dinners can be picked up on Thursday, March 25 between 9:00 a.m. and 4:00 p.m. or on Friday, March 26 between 9:00 a.m. and 3:30 p.m.



CMI • 785 Ridge Road Hamden, CT 06517 • 203-288-3877 • [www.cmihamden.org](http://www.cmihamden.org)



## A MESSAGE FROM THE RABBI

**Rabbi Brian P. Immerman**

Friends,

March marks one year since COVID caused us to physically separate ourselves from one another. One year since we relearned everything about interacting with friends, family, neighbors and strangers. One year since we filled our sacred chapel with song and prayer. Days stretched into weeks which stretched into months. Even as many of us are receiving the vaccine and we see light on the horizon, marking a full year of COVID brings a flood of emotions, grief, and sorrow.

For those of you who have lost family and friends to COVID, I offer condolences on behalf of our entire congregation. I have always admired Jewish customs around mourning because they gather the community to support those in mourning. Tragically, the pandemic forced us to mourn in solitude, with limits on the number of people at funerals and no in-person shivas. For those who became sick and recovered, we pray for a continued r'fuah shleima, may you continue to be healthy. For those of us who continue to weather this storm together, finding comfort wherever we can, we pray that our spirits find comfort and protection.

On the yearly anniversary of someone's death, a yahrzeit, we recite the mourner's kaddish, a prayer that speaks not of the challenges we face but rather all of the ways in which we can praise God as we ask God to bring us abundant shalom, wholeness and peace during the most challenging times in our lives. Many of us are grieving as we mark one year with COVID – grieving both what our lives were before March 11, 2020, and everything we missed since then: birthday parties, b'nai mitzvah, meals out, in-person worship, funerals, hugs from friends, and so much more. The kaddish teaches us that through our grief we can try to find reasons to be grateful.

We are grateful because even though we could not connect as we did before, we embraced technology to reach out to our friends and family. We are grateful that on Friday nights we still are able to see and talk to our community, grateful that our 80+ students who show up to religious school twice a week continue to build relationships and a positive Jewish identity,

grateful to be able to learn together, grateful for the comfort that we still receive from friends during b'nai mitzvah, shiva, weddings, and breakout rooms because we can still feel their presence from miles away. Personally, I'm grateful for you, our sacred CMI community, for all of the support that I have received and that you have shared with others during this year.

Our CHESED team has called every member of our community several times during the past year, we have delivered groceries and meals, and we have shown that being a part of CMI means never being alone, even when we cannot leave our house. We are and will always be here for you if you need help, please do not hesitate to reach out. Through our gratitude I know that we will find hope. With every vaccination dose administered, we grow one step closer to re-opening our building, our homes, our community, and our world. There is a bright light on the horizon and soon we will be back together. Until then, we will continue to remain physically apart, wear masks, and do all that we can to protect ourselves and others. I look forward to seeing you at our second annual (and hopefully last) virtual second night Passover seder, and to joining together in prayer on our patio when the weather permits.

May there be abundant peace from heaven for all of us here on this earth, and let us say, Amen.

With blessings of comfort, healing, courage and patience,

Rabbi Brian P. Immerman

**The CMI community is invited  
to wish Mazel Tov to the**

*Confirmation  
Class of 2021*

**REMOTE CONFIRMATION SERVICE**

**Friday, April 30, 6:00 p.m.**





## CANTOR'S NOTES

### Cantor Arthur Giglio

A year has gone by and still we have not had a Shabbat Service in the chapel at CMI. Who would have known that this pandemic would have lasted this long? We have now had services on Zoom for a year and, Baruch HaShem, that has actually been an extraordinary experience. It has kept our CMI family together on many levels. Our community moved to everyone's homes on Shabbat and that has been very unique and special. Sadly, I am not teaching my B'nai Mitzvah students in person or making music with the CMI Chorale or my most special Jr. Choir. I like to believe every cloud has a silver lining and Zoom Shabbat Services has certainly created them.

We have always been blessed with so much musical talent at CMI. Since I began as your Cantor, I have endeavored to bring you musical guests from our CMI family. They have continued to bless us throughout the pandemic, turning a Shabbat Zoom service into something very special and very personal. We all know that talent abounds at CMI, yet I have the suspicion that there are more who have not come forward to join us. If this applies to you, I deeply encourage you to let your musical muse bring you forth and join our community. Not knowing the tunes from the service is not a reason to stay away. I can provide all the songs and then some, in whatever key or clef you may desire. Yet, remember this is not just for older congregants! If you are below the age of 21 and you want a chance to move us through the wonder of prayer in music, please contact me! I too started as a very young child singing in choirs and I was always grateful to sing when given the opportunity! If you are feeling too anxious to ask me, then have your parents do it. They are by default your number one fans! Song and music are indeed holy, they connect the heart and soul to God. The world renowned philosopher, Rabbi Abraham Joshua Heschel said in his essay, *continued on page 7 ...*



## PRESIDENT'S MESSAGE

### Michael Dimenstein

The arrival of spring and the promise of Pesach inspire us with the potential for renewal and redemption. We have endured, and thankfully survived, what was possibly the most challenging winter of our lives—not caused by weather, but by conditions of historic proportion. Despite a raging pandemic, a tumultuous political environment and unresolved social justice concerns, we still reflect on the reasons, however simple, to be grateful.

I am particularly grateful that my role as Congregation Mishkan Israel president affords me the opportunity to make regular visits to our historic and magnificent synagogue building. I hope we can gather there together soon.

As I walk through the welcoming halls, view the spectacular artwork, linger at the doors of the glorious sanctuary and drop by the comfortable chapel, I am constantly inspired and in awe of the splendor of our spiritual home. Beyond the visual feast, the walls of CMI contain the sacred memories of congregants and their loved ones who came before us. The names and dates of passings of parents, grandparents, teachers, friends and family members are lovingly preserved for many generations on beautiful bronze memorial plaques. Our plaques reflect the lives of the CMI community, from the earliest 19th Century congregants and those they honored, to many for whom we have celebrated only one or two Yahrzeits.

Observing Yahrzeit, the anniversary of one's death, is a mitzvah and a sacred act. The custom of burning a memorial lamp for 24 hours to observe a loved one's anniversary of death can be traced to the Middle Ages among Ashkenazi Jews. Lighting a candle or memorial lamp is a sign of reverence for the deceased, and in modern Jewish life, one of the most widely observed customs throughout the world.

*continued on page 7...*

## CMI LIVESTREAMS SERVICES

We livestream services so that members and friends may enjoy services and the holidays. Regular services are available for viewing on your computer or mobile device. Simply go to <http://cmihamden.org/worship/livestream/>. Copies of past services are available under the Archived Videos tab. If you do take advantage of this service, please let us know of your experience.

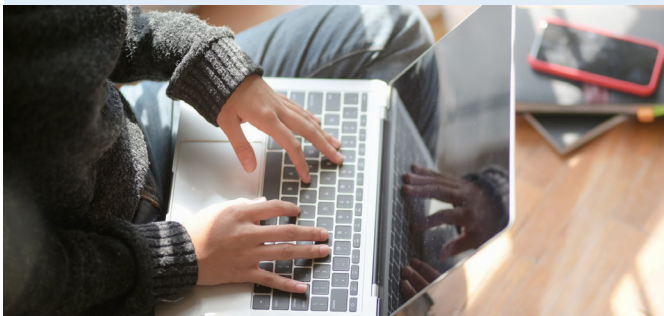
The implementation of livestreaming capability was made possible in part by a grant from the Jewish Home Building Fund Corporation.

## CONNECT WITH CMI ONLINE

Keep up-to-date with all CMI events. Check our website regularly at [cmihamden.org](http://cmihamden.org). You will find announcements, upcoming events, calendar, worship service times, and contact information. New members can join the congregation, and everyone can register for religious school and nursery school, pay your bills and make contributions.

We have several e-newsletters to keep our congregational family informed of upcoming events, recent passings, and school events. If you're not currently receiving our e-newsletters, contact Sarah at [slegassey@cmihamden.org](mailto:slegassey@cmihamden.org) so that you can get on the distribution list.

CMI is on Facebook. Click the icon on our website or go to <http://www.facebook.com/cmihamden>. You'll want to "like" us.



## APRIL WORSHIP SERVICES & STUDY

### 6th DAY OF PESACH

**Friday, April 2**

6:00 p.m. Evening Service

### 7th DAY OF PESACH

**Saturday, April 3**

9:00 a.m. Torah Study

10:30 a.m. Passover service with Yizkor

### SHABBAT SHMINI

*Leviticus 9:1-11:47*

**Friday, April 9**

6:00 p.m. Evening Family Service

**Saturday, April 10**

9:00 a.m. Torah Study

### SHABBAT TZARIA-METZORA

*Leviticus 12:1-15:33*

**Friday, April 16**

6:00 p.m. Evening Service

**Saturday, April 17**

9:00 a.m. Torah Study

### SHABBAT ACHREI MOT-KEDOSHIM

*Leviticus 16:1-20:27*

**Friday, April 23**

6:00 p.m. Evening Service

**Saturday, April 24**

9:00 a.m. Torah Study

10:30 a.m. Tot Shabbat

### SHABBAT EMOR

*Leviticus 21:1-24:23*

**Friday, April 30**

6:00 p.m. Evening Service with Confirmation

**Saturday, May 1**

9:00 a.m. Torah Study

*Service times are subject to change. For the most up-to-date information and to hear sample tunes from services, go to <http://cmihamden.org/worship>.*

## RACE & RACISM SERIES CONTINUES

Racial justice is a Jewish issue, rooted in our history and our beliefs as Jews. Please join us on Thursday, March 4 and again on Thursday, April 1 at 7:00 p.m., as we continue with our important program, “CMI Series on Race & Racism: Deepening Our Understanding by Learning Together”. These sessions are an opportunity for individuals who are beginning to delve into these topics, as well as for those looking to further their understanding and engagement by joining in discussion with others. We’ll explore key issues through a brief overview presentation on the topic and a facilitated group discussion designed to offer participants a way to share their reflections. Resource materials will be assigned in advance of each session. Please join us! Monthly sessions will continue through June and all are welcome. Advance registration is required, and you can do that at [cmihamden.org](http://cmihamden.org).



**CMI  
PE'AH  
GARDEN**

Dig in the dirt, make new friends (or chat with old ones) and be part of our Pe'ah Garden.

You do not need to be an experienced gardener to participate. Volunteers are needed to help weed, harvest and to transport vegetables to the soup kitchen.

Need more information? contact Madeline Ravich at [mcravich@gmail.com](mailto:mcravich@gmail.com)

**JOIN US**

Help the CMI community in our mission. Half of the produce is grown for local soup kitchens & half is for gardeners to enjoy fresh herbs and vegetables at home.

CMI • 785 Ridge Road Hamden, CT 06517 • 203-288-3877 • [www.cmihamden.org](http://www.cmihamden.org)

## SOCIAL ACTION NEWS

### JEWISH FAMILY SERVICE COVID-19 VACCINE ASSISTANCE

We have partnered with Jewish Family Services to help our community navigate the complex system of COVID vaccinations. Judaism teaches us that we should do everything we can to save a life, whether our own or another's and CMI is here to assist you. If you need assistance in making an appointment or with transportation, we are here to help. For help with vaccination appointments, please call JFS directly at 203-389-5599 or for help with transportation, please reach out to Rabbi Immerman at [rabbi@cmihamden.org](mailto:rabbi@cmihamden.org) or by calling the office at 203-288-3877.

### JEWISH COMMUNITY ALLIANCE FOR REFUGEE RESETTLEMENT (JCARR)

During the last few months, we have welcomed a new baby, congratulated one of our mom's for receiving her CNA certificate, and applauded another family for receiving their green cards. We are all hopeful that with the new administration there will be a different tone in refugee issues and we will be able to welcome more refugees to our country. Our families are feeling relief and hope. Please take a moment to visit our website, [cmihamden.org](http://cmihamden.org), to read and learn from one of our families about this newfound sense of hope. To get involved and learn how you can help, please contact Sue Millen at 203-288-9797.

### CHEVRA HANDS

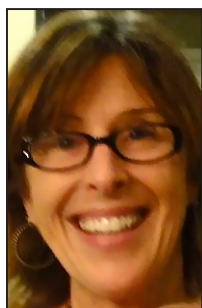
Join us in creating shawls for those in our congregation who might find comfort in our congregational expression of caring. Chevra Hands makes quilts and blankets to welcome our newest members or provide loving warmth to those who are ill. We knit and crochet and have been quilting together creating lap quilts and baby blankets. No experience necessary, just a sense of humor, patience and a willingness to learn. For further information contact Sue Millen at [smillen179@sbcglobal.net](mailto:smillen179@sbcglobal.net)



## CANTOR'S NOTES *continued...*

“The Vocation of the Cantor”, “Song is the most intimate expression of man. In no other way does man reveal himself so completely as in the way he sings. For the voice of a person, particularly when in song, is the soul in its full nakedness. When we sing, we utter and confess all our thoughts. In every sense Hazzanut is hishtapkhuth hanefesh (outpouring of the heart). There is a story about the Ba'al Shem who was once listening most intently to a musician. When his disciples asked him why he was so absorbed in what he heard, the Ba'al Shem replied: “When a musician plays, he pours out all he has done. Come pour out all you can do on Shabbat!”

Please remember to join us on Pesach for our congregational 2nd night Seder! Check the CMI bulletin and calendar for details. Like last year, it will be a virtual Zoom Seder and we will have the wonderful opportunity to be in each and everyone's homes for Pesach. You can't celebrate chagim (holidays) any better than that. Don't forget the glass of wine for Elijah and the Cantor!



## NURSERY SCHOOL NEWS

**Susan Witten Nason**  
**Early Childhood Director**

It looks like we made it through most of the winter.

We enjoyed the snow and crisp, cold weather, but we are looking forward to the spring. Hope Springs Eternal, and we all have so much to hope for!

We will be busy getting ready for Passover and look forward to having some small ‘mock’ Seders in our classrooms.

חג שמח

## PRESIDENT'S MESSAGE *continued...*

At CMI, on the Shabbat nearest their Yahrzeit, the names of departed loved ones are recited in the synagogue just before praising God's name in the ancient Aramaic words of the Kaddish. At the same time, our extraordinary CMI staff ensures that the light on each memorial plaque is lit in observance of the Yahrzeit anniversaries of the week. This practice takes place weekly and we hope will continue in perpetuity.

Please know that there is always room for you to add the name of your loved one(s) to our hallowed walls and ensure that, as our congregations flame burns bright, they too will have light lit in remembrance each year. Our hope is that people won't simply walk down our hallways but will pause to remember and reflect upon those who came before us.

I am grateful to be part of this sacred community that has endured for 180 years, built by those whose memories and stories serve as our foundation. As we remember those who came before us, may we find hope and the courage to persevere during this time through the support of our sacred CMI community.

## MEMORIAL PLAQUES

Anyone may choose to preserve the memory of their loved one for a donation of \$500 for an individual plaque, or \$450 each if purchasing more than one. You may order memorial plaques online through your ShulCloud account ([cmihamden.org/donate](http://cmihamden.org/donate)) or by using the order form enclosed in this bulletin. As we continue to celebrate 180 years as a congregation, please consider preserving the memory of your loved ones on CMI plaques. By doing so they become a special part of our congregation's celebrated history.

**MARCH 5**

Babetta Adler \*  
 Herbert Baltimore \*  
 Sophie Lerner Bass  
 Jack Belman  
 Nathan Berke  
 Pauline Bloom  
 Celia W. Brown \*  
 Fred Fagelson  
 Stanley A Fishbein  
 Terry Fleischer \*  
 John J. Fox  
 Shirley Glooskin  
 Marvin Chaucer Gold \*  
 Samuel Goodman \*  
 Anna S. Gratenstein \*  
 Marilla G. Guttman \*  
 Dr. J.M. (Julius) Harrison \*  
 Laurence L. Jaffe \*  
 James S. Johnson Sr. \*  
 Rhea Simkin Kaetz \*  
 Bruce B. Kauffman \*  
 Alice Kruger  
 Arnold Lawall  
 Eziel Lederman  
 Esther (Estelle) Levinson  
 Anna G. Levy \*  
 Mildred C. Liner \*  
 Raymond C. Lurie \*  
 Esther Margulies  
 Hyman Mendelsohn \*  
 Frederick A. Merliss \*  
 Nathan Merriam \*  
 Beatrice Rattner Milner  
 Doug Moller  
 Flora Oliver  
 Samuel M. Opper \*  
 Rollin G. Osterweis  
 Sherwood (Pinky) Irving Pinkus  
 Harold Seymour Roswig \*  
 Laurance E. Schoenberger \*  
 Isadore A. Schycon \*  
 Dorothy Seif  
 Marion Breslav Silverberg \*  
 Melvin Silverman  
 Eva Sugenheimer \*  
 Isadore Sugenheimer \*  
 Emanuel Thalheimer  
 Helen Ullman \*  
 Sholom Omi Waife, MD  
 Milton Weiner  
 Irma Stein Weiss \*  
 Gladys Welsch  
 Jack Zalon

**MARCH 12**

Sylvia Kaufman Alterman  
 Symmie Bachman  
 Boris Bass  
 Maxine Appell Born \*  
 Walter Breslav  
 Mort Brozinsky  
 Albert Chorney \*  
 Mortimer L. Cohn \*  
 Bertram M. Eager  
 Gertrude Feldman  
 Sadie Gelb Fisher \*  
 Monroe Frankenberger  
 Harry Fribush  
 Marcelle Friedman \*  
 Claire Geller Steiger  
 Robert Goldstein \*  
 Joseph Goldstein  
 Harold Harris  
 Benjamin Henchel \*  
 Janet S. Kleinman \*  
 Jack Klinger \*  
 Moses Koizim  
 Theodore I. Koskoff \*  
 Robert S. Krevit \*  
 Bessie M. Kushlan \*  
 Melvin Laubstein \*  
 Zelly Levine \*  
 John C. Liner \*  
 William Mack, Jr.  
 Elaine V. Orland \*  
 Alexander H. Perlman  
 Leah Premark  
 Earl Rosenblum  
 Lawrence I Sanders  
 Bernard N. Schaefer  
 Dr. Harvey A. Siegel  
 Pearl Silverman  
 Harry Siperstein  
 Fred Ticotsky  
 Herbert Turkel \*  
 Fred Walman \*  
 Louis P. Weil \*  
 Alan Robert Weiner \*  
 Rose W. Werzburg \*  
 Barbara Wolff  
 Augusta Young

**MARCH 19**

Meta Arnopolsky  
 Eli Baar  
 Morris Baser \*  
 Nancy T. Berdon  
 Jean C. Berdon  
 Shirley Bernstein  
 Jennie Besser \*  
 Peter Blackman \*  
 Charles Byer  
 David Caplan  
 Joseph Chauser \*  
 Eliezer Danishevsky \*  
 Santo (Sonny) Festa  
 Sylvia Weller Fish  
 Rachel S. Freedman \*  
 Elias Friedman  
 Rose Giskin  
 Edna Goldstein \*  
 Eunice Wasserman Gordon \*  
 Herman Robert Greenhouse \*  
 Mildred Greenwald \*  
 William J. Handleman \*  
 Helen Schreiber Heller  
 Irene Siegel Hillman  
 Frieda Katz  
 Elliott R. Katz \*  
 Cantor Sidney Kizer  
 Clara Kleiner \*  
 Simon R. Lipsher \*  
 Fanny Lipton  
 Max Mager \*  
 Moses Mann \*  
 Arthur Hesse Mendel \*  
 Isaac Mendelsohn \*  
 Gustave Osterweis \*  
 Pearl Pearl  
 Albert Rogowski \*  
 Simon Rosenberg \*  
 Robert Schnitman \*  
 Leah Unger Serow \*  
 Roberta Lurie Shapiro \*  
 Simon B. Shoninger \*  
 Harry Silverman  
 Theresa Strauss \*  
 Isadore G. Strauss \*  
 Robert Tiven  
 Rick Wallace \*  
 Kurt Weiss \*  
 Laura Zuckerman

**MARCH 26**

William Barkin \*  
 Jack Beech  
 Fanny Berger \*  
 Reyna Berman \*  
 Bendid Bruskin  
 Fannie Calechman \*  
 Myrna Cassin  
 Amy Goldman Cohen  
 Burton Richard Dunn  
 Joseph Finkel  
 Rose Goldstein  
 Minna M. Gompertz \*  
 Rose Alterman Groopman  
 John J. Groves  
 Dr. Gene G. Haber \*  
 William Hallo \*  
 Bernard Horwitz \*  
 Julius Jacobs \*  
 Robin Kalina  
 Max Kerman  
 Sylvia Lesser  
 Norman Levine  
 Melville W. Machol \*  
 Maurice Milstone  
 Isaac Newman \*  
 Marshall J. Rachleff \*  
 Sam Rennert  
 Gladys L. Rosenberg \*  
 Rachel Rosenthal  
 Alan Schrank  
 Deborah Shapiro  
 Jennifer Shaw  
 Joseph Sonnenberg \*  
 Emily Spiegel  
 Eva Sterling  
 Sylvia Stern \*  
 Pearl Bass Ticotsky  
 Malcolm Webber  
 Pearl S. Weinick \*  
 Franny Weiss  
 Arnold Werner

*In Memoriam*

Marilyn Gredinger ~ Lydia Levine ~ Sanford Schreiber

*May their memory be for a blessing*

*\*In Perpetual Memory*



**APRIL 2**

Samuel Abeshouse \*  
 Jeanne Kraft Alterman  
 Emily Borenstein  
 Henry C. Bretzfelder \*  
 Lillian Brochin \*  
 Nathan Cohen  
 Barry Corper \*  
 Thelma W. Frankenberger \*  
 Julius I. Friedman \*  
 Irving Goldstein  
 Carol Block Haberman  
 Henry Hahn  
 Sigfried Herrmann \*  
 Mary B. Katz  
 David S. Korn \*  
 Louis B. Kronick  
 Ben Ledbetter, Sr.  
 Charles E. Marcus \*  
 Hyman Markle  
 Sara Schwey Maskel \*  
 Daniel Ominsky  
 Assunta Izzo Patrizio  
 Roman Matthew Rifkin \*  
 Linda Rollo  
 Eddie Rosenthal  
 Martin Rubin  
 Helen Sanders  
 Bernard Shapiro \*  
 Jacob (Jack) A. Silver  
 Adolph Ticotsky  
 Sylvia Vinick  
 Gertrude Weinstein  
 Fannie Weissman

**APRIL 9**

Donald Berkowitz  
 Harry L. Berman \*  
 Karl A. Bretzfelder \*  
 Nathan B. Burness \*  
 Rosalie Michlin Byer  
 Sylvia Barkan Danza \*  
 Sol Freed \*  
 Lewis Henry Freedman \*  
 Dr. Louis R. Gans \*  
 Max Garland  
 Isidor Goldberg  
 Emma Lambert Hahn  
 Solomon Heller  
 Julius (Jack) Jacobson  
 Luba Khait  
 Bernard Krug  
 Edith Lakin  
 Benjamin D. Levine \*  
 Lena Lichtenstein \*  
 Blanche B. Lipsher  
 Sidney Lurier \*  
 Dr. Robert E. Maizell \*  
 Marion C. Sachs \*  
 Alfred Schindler  
 Magda Schneider  
 Sylvia W. Scholder \*  
 Samuel Shukovsky  
 Anna Fenn Shure \*  
 Marion Silberberg  
 Sarah Silverman  
 Enid Weisz Stone  
 Benjamin Sugenheimer \*  
 Renee E. Toffler \*

**APRIL 16**

Dorothy Alpert Adler \*  
 Morris Borenstein  
 Nancy Bostin \*  
 Aaron Cohen  
 Sarah J. Cohen  
 Rhoda Cohn \*  
 Beatrice Dunn  
 Jacqueline Isaacs Eder  
 Kalman Fibel  
 Herman Fleischner \*  
 Barnett P. Freedman \*  
 Lucy Goldfarb  
 John M. Goldhamer \*  
 Philip Goodman \*  
 George Greenstein  
 Dollie Haber \*  
 Miriam Brownstein Haut  
 Frances Yudkin Henchel \*  
 Dorothy Hilcoff \*  
 A. Allen Johnson \*  
 Dr. Bud (Saul) Kapel  
 Henrietta Koch \*  
 Beatrice Koizim  
 Morris Landowne  
 Myrna Batter Leslie \*  
 Benjamin Levin  
 Saul Levine  
 Ellis Lincoln  
 Herman Machol \*  
 Henrietta H. Machol \*  
 Rita Malkin  
 Sydney Marcus  
 Aaron Racusin  
 Frances Rittner  
 Dr. Bernhard A. Rogowski \*  
 Sally Swirsky Rosenthal  
 Anna Schaefer  
 Elizabeth (Betty) J. Scholder \*  
 Norman Shapiro  
 Michael Sonnenberg \*  
 Morris Stromfeld  
 Jack B.. Tropp  
 Anita Turner  
 Thomas J. Ullmann  
 Isidore Zakar

**APRIL 23**

Dora Alterman  
 Melissa Batter \*  
 Jacob Belford  
 Martha Johnson Caesar \*  
 Hyman Calechman \*  
 Louis Chernosky \*  
 Eva Cooperstock \*  
 Florine Spear Davidson \*  
 Julie Drabkin  
 George Feinn \*  
 Pearl Fierman  
 Thelma Friedman  
 Harry Giskin  
 S. Michael Gompertz  
 Vilma Hoffmann  
 Michael Hozer  
 Sylvia M. Jacobs  
 Edward I. Jacobson \*  
 Sherman Jacobson  
 Mary Kleiner \*  
 Estelle A. Kone \*  
 Morris Korman \*  
 Ilse Hess Krevit \*  
 Molly Krug  
 Max Kruger  
 Michael Lebson  
 Marcia O'Brasky Levin \*  
 Sadie Liftig \*  
 Anna Lipin  
 Louis S. Loeb \*  
 Zelma Letsky Mintz  
 Rosalyn Sylvia Proscio \*  
 Stephen E. Ronai  
 Ida Schub  
 Stephanie Schwait  
 Rae Webber  
 Sophie B. Weil \*  
 Samuel Weinstein  
 Samuel Weinstock \*  
 Robert C. Weisselberg  
 Clara Dorothy Wrubel \*  
 Rabbi Marjorie Yudkin

**APRIL 30**

Milton Adnopoz  
 Marvin Baltimore  
 Jack Dudley Barnston \*  
 Rose Baser \*  
 Pam Brockman  
 Louis Bruskin  
 Emanuel Buxbaum \*  
 Charlotte A. Cahn \*  
 Alice Chorney \*  
 Barbara Arman Cohen  
 Judith Adler Cole  
 Matilda Lublin DeFeo  
 Mary Evans  
 Haiy Flit  
 Norman Gans \*  
 David Shmu'el Gingis  
 Bessie Goldberg  
 Samuel Goldstein  
 Gerald Good \*  
 Fannie J. Goodman \*  
 Dao Duc Hau \*  
 Emanuel Kapel  
 George Kasden \*  
 Leonard Louis Levy  
 Max Lipsher  
 Lawrence Loeb  
 Beatrice Lynes \*  
 Sarah Machol \*  
 Louis Mohill  
 Dr. Harry G. Moss \*  
 Valentine Naphtali  
 Everett Orzack  
 Arthur G. Ostheimer  
 Abbey Perlman  
 Rachel Rotkopf  
 Claire R. Setlow  
 Evelyn Shapiro  
 Samuel Shernow \*  
 Goldie Silver  
 Marion Goldbaum Silverstone \*  
 Rose Sklarz  
 Robert Smith  
 Elizabeth Stone  
 Ned Thomas \*  
 Bernice Drew Tropp  
 Sherman Weiner  
 Evelyn S. White \*

*In Sympathy*

Geraldine Katz on the passing  
 of her sister, Marlene Paige

Gina Novick on the passing  
 of her mother, Ruth Novick

Marc Olins on the passing  
 of his mother, Lydia Levine

Tracy Dowgiewicz on the passing  
 of her brother, Mark Schatten

Carol Schreiber on the passing  
 of her husband, Sanford Schreiber

\*In Perpetual Memory

*“...who donates much to charity becomes the richer for it...”*

Zohar iii 110b

**DECEMBER 1, 2020– FEBRUARY 1, 2021**

**ENDOWMENT FUNDS:** (invested to generate annual income for specific purposes)

**General Fund**

Astmann Family	<b>In Memory of</b> DR. SANFORD SCHREIBER
Betsy Barnston	DR. SANFORD SCHREIBER
Dave Rodnick	SALLY LEVINE
Kirk & Ellen Shultz	MARILYN GREDINGER
Sturtz Family	LOUIS STURTZ

**Jay Bovilsky Scholarship Fund**

Deborah Bovilsky  
Richard Lovely

**Cemetery Fund**

Andrew & Maryann Postman	<b>In Memory of</b> GRACE POSTMAN
Joel & Lorraine Roseman	MORRIS ROSEMAN
David Samuels	SHELDON DAVID SAMUELS
Pearl Spodick	ROBERT C. SPODICK

**Robert E. Goldberg Peace & Justice Fund**

Lisa Adams	<b>In Memory of</b> IRENE ADAMS
Lisa Adams	ROBERT ADAMS
Dr. Carl Cassin	MYRNA K. CASSIN
Richard Ruth & James North	ESTHER HUBELBANK
Jim & Cis Serling	DR. SANFORD SCHREIBER
Mark & Judy Sklarz	ANN R. SKLARZ
Bert & Martha Weisbart	MORTIMER L. COHN

**Mabel Klebanoff Fund** (transportation)

Martin Korn & Dr. Sylvia Betcher	<b>In Memory of</b> SYLVIA KORN
-------------------------------------	------------------------------------

**Lydia Levine Fund**

Daniel & Sharon Milikowsky	<b>In Memory of</b> LYDIA OLINS LEVINE
Robert & Maxine Wallace	LYDIA OLINS LEVINE

**Isidor E. Offenbach Musical Service Fund**

Paula Adelson & Janet Rozman	<b>In Memory of</b> SONIA GROSSMAN
Russell D. Offenbach	ISIDOR E. OFFENBACH

**Patt Stitzel Campership Fund** (youth)

Elaine Blumenthal	<b>In Memory of</b> LYDIA LEVINE
Elaine Blumenthal	ELSIE STROMFELD

**TARGET AREAS:** (meant for immediate use of funds)

**General**

Betsy Henley-Cohn  
Priscilla Jencks  
Peter Kane

Wendy Blair  
Wendy Blair  
Wendy Blair  
Michael Dimenstein &  
Hedda Rubenstein  
Michael Dimenstein &  
Hedda Rubenstein  
Michael Dimenstein &  
Hedda Rubenstein  
Michael Dimenstein &  
Hedda Rubenstein  
Michael Dimenstein &  
Hedda Rubenstein  
Michael Dimenstein &  
Hedda Rubenstein  
Michael Dimenstein &  
Hedda Rubenstein  
Sarah Greenblatt  
Sarah Greenblatt  
Allan Hillman &  
Penny Marcus  
Allan Hillman &  
Penny Marcus  
Allan Hillman &  
Penny Marcus  
Priscilla Jencks

Phyllis Medvedow  
Eric Millman  
Susan Salowitz

Brenda Arovas  
Brenda Arovas  
Estelle Baltimore  
Larry & Phyllis Bausher  
Alice & Richard Baxter  
Wendy Blair  
Harold & Myrna Blumenthal  
Irwin Braverman  
Lynn Bullard  
Marcia Burick

**In Appreciation of**

JENNIFER LEVIN-TAVARES  
ANA TAVARES  
BEN TAVARES  
RABBI EMERITUS  
HERBERT BROCKMAN  
MERAV CANAAN

CANTOR ARTHUR GIGLIO

MICHELLE GOLDSTEIN

RABBI BRIAN IMMERMANN

SUSAN WITTEN NASON

180th ANNIVERSARY of CMI  
MICHAEL DIMENSTEIN  
MICHAEL DIMENSTEIN

RABBI IMMERMANN

SUSAN MCDONALD

“With thanks to the CMI staff  
for all you do.”

DR. SANFORD SCHREIBER  
DR. SANFORD SCHREIBER  
RABBI IMMERMANN

**In Memory of**

ROBERT ABELS  
SIMON AROVAS  
LEE DAVID MILES  
ETHEL DONATH  
MARY LEVINE  
FRANK TAVARES  
MARK SCHATTEN  
DAVID BRAVERMAN  
CLIFFORD ALTSCHULER  
DR. SANFORD SCHREIBER



Stuart & Hedy Bush  
Christopher Caprio  
Michael Dimenstein &  
Hedda Rubenstein  
Michael Dimenstein &  
Hedda Rubenstein

HONORARY ARTHUR S. SILLS  
MARK SCHATTEN  
HYMAN B. DIMENSTEIN  
  
MARILYN GREDINGER

Michael Dimenstein &  
Hedda Rubenstein  
Michael Dimenstein &  
Hedda Rubenstein  
Tracy & John Dowgiewicz  
Steven & Jackie Elliott  
Irene Farber  
Alvin & Gloria Fine  
Scott & Abby Friedman  
Samuel Geller &  
Donna Lehman

MAXWELL RUBENSTEIN  
  
MARK SCHATTEN  
MARK SCHATTEN  
MARK SCHATTEN  
MARK SCHATTEN  
MARK SCHATTEN  
DOROTHY COHEN

Fred & Bernice Gillman  
Jacqueline Gold  
John & Frances Gordon  
Marilyn Gredinger (z'l)  
Sarah B. Greenblatt  
Sarah B. Greenblatt  
Sarah B. Greenblatt  
Sarah B. Greenblatt  
Hellerman Family  
Elaine Hitt &  
Jonathan Alderman  
Elaine Hitt &  
Jonathan Alderman

MARILYN GREDINGER  
ROBERT GOLD  
ISRAEL M. GORDON  
MARK GREDINGER  
ELAINE G. GLADSTEIN  
DOROTHY K. GREENBLATT  
SAMUEL F. GREENBLATT  
MARK SCHATTEN  
DON V. HELLERMAN  
HYMAN LAND

Lois Jason  
Karen Kimball  
Shirley Klinsky-Schnitzer &  
Stuart Schnitzer  
Carolyn Kone &  
Allan Rubenstein  
Meir & Barbara Kryger  
Meir & Barbara Kryger  
Jon Lehman  
Allen & Cheryl Lipson  
Jo-Ann Maude  
Charles & Judith Naden  
Seymour Nepiarsky &  
Lauren Brownstein  
Diane Olin  
Anita Perlman  
Eleanor Rachleff-Serow  
Dave Rodnick  
Mary Elizabeth Stewart  
Annette Szczesiul  
Western New England  
Psychoanalytic Society

MILDRED LAND

JEROME JASON  
MARK SCHATTEN  
MARK SCHATTEN

MAX RUBENSTEIN

ROSE KRYGER  
EVELYN ROSENBLUM  
MARJORIE LEHMAN  
LYDIA OLINS LEVINE  
MARK SCHATTEN  
ENID GOLDSMITH  
MARILYN GREDINGER

LYDIA OLINS LEVINE  
MINNIE PERLMAN  
DR. ARNOLD H. SEROW  
STEVE ZIELINSKI  
GEORGE LUBLIN  
MARILYN GREDINGER  
DR. SANFORD SCHREIBER,  
friend and colleague

#### Adult Ed./Seniors

Bob & Maxine Wallace

**In Memory of**  
MARILYN GREDINGER

#### Brotherhood of Men & Women

Paul & Deborah Greebaum  
Bill & Nancy Horowitz

**In Memory of**  
ROBERT ABELS  
DR. SANFORD SCHREIBER

#### Building Fund

Allan Hillman & Penny Marcus

**In Honor of**  
CHUCK & JUDY NADEN'S  
grandson, ELLIS LEONARD'S  
birth

Benjamin & Maria Kahn  
Charles & Judith Naden

**In Memory of**  
ROBERT ABELS  
SARAH NADEN

#### Cemetery Fund

Susan Strauss

Jerome Korman

**In Memory of**  
LILLIAN (BUNNI) KORMAN

#### Hunger Fund

Rochelle & Glenn Cummings

**In Honor of**  
All our grandchildren  
with love and wishes for  
a Happy Chanukah

Seth & Gail Agata  
Bob & Irma Bachman  
Bob & Irma Bachman  
Bob & Irma Bachman  
Mark & Nancy Olins  
Frederick Rosen

**In Memory of**  
GEORGE LUBLIN  
ANNETTE COHEN  
SIDNEY COHEN  
DR. SANFORD SCHREIBER  
SAMUEL A. SIMONS  
MARK SCHATTEN

#### Library Fund

Deborah Hoffman

**In Honor of**  
BARBARA KRYGER'S  
milestone birthday

#### Music Fund

Allan Hillman & Penny Marcus

Toby Gehm  
Steve & Alisa Germaine  
Robert & Harriet Leventhal  
Michael, Ellen, Seth, Diane &  
Lily Rosenthal

**In Honor of**  
ARTHUR GIGLIO, SR.  
**In Memory**  
GEORGE LUBLIN  
MARK SCHATTEN  
MARK SCHATTEN  
NATHAN ROSENTHAL

#### Nursery School Fund

Michael & Erika Forte  
Steve & Alisa Germaine

**In Memory of**  
LEE PERLMAN  
DUBBY SPIVACK

#### Social Action Fund

The Brin Family  
Nancy Moss Racusin  
Nancy Moss Racusin  
Steven & Amy Rashba

**In Memory of**  
FLORA GOLDSTEIN  
ANN MOSS BERLAND  
CAROLINE OSTER  
DR. SANFORD SCHREIBER

**SPECIAL FUNDS:****Rabbi Herbert N. Brockman Rabbinic Endowment Fund**

Richard Bernstein &  
Adriana Blanco

**In Honor of**  
THE REZNIK FAMILY

Linda Proscio

**In Memory of**  
RHODA KORFF

**Rabbi Immerman's Discretionary Fund**

Kari Davis & Elisha Hennig  
Marc & Nancy Olins

**In Appreciation of**  
RABBI BRIAN IMMERMANN  
RABBI BRIAN IMMERMANN

Batja & Karen Astrachan  
David & Julie Chevan  
Allan & Eden Fisher  
Neil & Marlene Greenberg  
Lindy Lee Gold  
Larry & Roberta Harris  
Joel & Cindy Kramer  
Joel & Cindy Kramer  
Susan Krieger  
Howard Lurie  
Ellyn Massey  
David & Susan Millen  
Susan Skolnick  
Toby & Russ Weiner  
Ira & Karen Zeid

**In Memory of**  
DR. SANFORD SCHREIBER  
MARK SCHATTEN  
FRED H. STEIGER  
ELEANOR JACOBS  
ROBERT GOLD  
ABE HARRIS  
ANDY SAGE  
HARRY SAGANSKY  
RHODA CAHN  
HYMAN LURIE  
ALAN MASSEY  
DR. SANFORD SCHREIBER  
DR. SANFORD SCHREIBER  
GEORGE LUBLIN  
MARILYN GREDINGER

**Chevra Hands**

Jordan & Elisa Miller  
Jeff & Alyse Sabina

**Abraham's Tent****SPECIAL THANK YOU**

We would like to extend a very special thank you to all those who so generously contributed to the efforts to fund housing for the Columbus House overflow shelter, in lieu of our annual Abraham's Tent week. Our goal was to raise \$2,000.00 and we surpassed that and raised \$4,840.00!!! Thank you for being the embodiment of CMI's vision of Tikkun Olam, repairing the world.

Michael Allen & Eun-Mi Shim, Karen Baar, Bob & Irma Bachman, Alice & Richard Baxter, Wayne & Andrea Chorney, David & Kim Cohen, Michael Dimenstein & Hedda Rubenstein, Marilyn Fagelson & Anthony Kaplan, Allan & Eden Fisher, Scott & Abigail Friedman, Stan & Bobbi Friedman, Steve & Miriam Giskin, Sarah Greenblatt, Adam Hittelman & Michelle Serlin, Priscilla Jencks, Ben & Tammy Kleinman, Elizabeth Koskoff, Paul & Alice Kowsowsky, Josh & Amanda Levitt, David & Susan Millen, Len & Ellen Milstone, Chuck & Judy Naden, Ellen Nasper & Barnett Brooks, Robert & Susan Nobleman, Marc & Nancy Olins, Todd Olszewski & Deborah Doroshov, Diane Orson & Tim Moran, Steven & Amy Rashba, Leslie & Jon Redmond, Joel & Lorraine Roseman, Frederick Rosen, Will Rosenblatt & Jeanne Steiner, David & Ruth Sack, James & Barbara Segaloff, Katharine Sacks & Joseph Heuther, Joan Shapiro & Luther Turmelle, Richard & Marie Shaw, Aaron Singer & Elizabeth Caspe, Bert & Martha Weisbart, Jim & Susan Wildes

**2020-2021 CHAI APPEAL**

It is with immense gratitude that we acknowledge those families who as of this publication have responded to the menu of additional giving opportunities with a commitment above their standard dues and to the holiday appeal.

**Our Pacesetters:**

Michael Dimenstein & Hedda Rubenstein  
Judith Hahn\*\*

James Horwitz & Sandra Allison\*

J. Lance Lichtor

Jerome & Roslyn Meyer\*\*

Larry Schaefer & Lina Lawall

Shirley Scholder

Jerome & Cecelia Serling

David Silverstone\*\*

Mark & Judith Sklarz

\*Double Chai

\*\*Torah Circle

**Additional Gifts:**

Floyd & Letty Caplan, Jacob Crane, Bernice Giskin, Saul & Sonya Goldberg, John & Frances Gordon, Sarah Greenblatt, Benjamin & Maria Kahn, Dalton King & Michele Abrams, Al Klevorik & Susan Bender, Priscilla Jencks, Joel & Lucinda Kramer, Jeffrey Smith & Edith Rotkopf, Rabbi Howard Sommer & Dr. Linda Waldman, Rabbi Steve & Caryl Steinberg

**IS SOMEONE IN THE HOSPITAL?**

Area hospitals are not permitted to notify us when a congregant has been admitted. If you know of a congregant who is in the hospital and would appreciate a call or visit, please contact Rabbi Immerman's office at (203) 288-3877 or [rabbi@cmiamden.org](mailto:rabbi@cmiamden.org).



# CONGREGATION MISHKAN ISRAEL MEMORIAL WALL (YAHRZEIT) PLAQUE ORDER

Please submit information for each plaque you are ordering.  
Price of plaques: **One plaque \$500; Two or more plaques \$450 each**

## Plaque 1

Full name of individual as you wish to see it on the plaque

Date of individual's death

## Plaque 2

Full name of individual as you wish to see it on the plaque

Date of individual's death

## Plaque 3

Full name of individual as you wish to see it on the plaque

Date of individual's death

## Plaque 4

Full name of individual as you wish to see it on the plaque

Date of individual's death

Please allow approximately 8 weeks for delivery of plaques to CMI. You will be notified of receipt and placement of the plaque on the memorial board. While we cannot guarantee the specific location of the plaque on the memorial board, every effort will be made to accommodate requests. If you do not specify your preference, a location will be selected for your plaque(s).

Person Ordering Information:

Name: \_\_\_\_\_

Address: \_\_\_\_\_

Email: \_\_\_\_\_

You can pay through ShulCloud, check, or submit Credit Card information below

Payment: Check enclosed \_\_\_\_\_ Credit Card

# \_\_\_\_\_ Exp. \_\_\_\_\_ 3 digit Security # \_\_\_\_\_

**CMI • 785 Ridge Road Hamden, CT 06517 • 203-288-3877 • [www.cmihamden.org](http://www.cmihamden.org)**



**ROBERT E. SHURE, INC.**  
— FUNERAL HOME —

Dedicated to the Dignity and Respect of Tradition.

---

543 George Street, New Haven, CT 06511

**Robert E. Shure**  
Founder

203-562-8244  
shurefuneralhome.com

**James M. Shure**  
President

MONUMENTS ERECTED IN ALL CEMETERIES

***NOLAN'S***  
***HAMDEN MONUMENT COMPANY***  
***LICHTENSTEIN COMPANY***

323 WASHINGTON AVE., HAMDEN, CT 06518

(203) 288-8486 • (203) 287-1593

CT Toll Free Only (800) 852-8865 • Fax (203) 287-1593

JOHN R. NOLAN  
MICHAEL F. NOLAN

nolansmonuments@att.net



# Benefit Congregation Mishkan Israel

Ask us about  
establishing a fund, trust or annuity  
to ensure CMI's future.

Jeffrey Hoos  
Chair,  
Board of Trustees



Lisa A. Stanger, Esq.  
Director  
203 387-2424 x382  
lstanger@jewishnewhaven.org

We are a warm and vibrant senior community, infused  
with Jewish values, where people live their best lives.



We lead with quiet competence,  
serving one another with care, strength and humility.

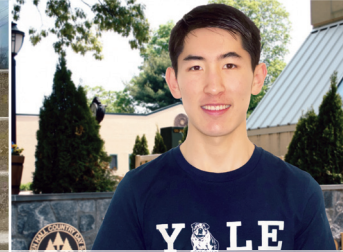
18 Tower Lane • New Haven, CT  
203-772-1816 www.towerlane.org



## THE HAMDEN HALL EXPERIENCE: CREATING ENDLESS OPPORTUNITIES FOR OUR STUDENTS



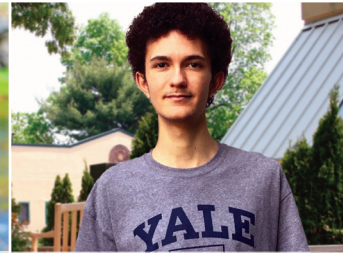
Orly Richter, Class of 2020  
Brown University



Michael Lee, Class of 2020  
Yale University



Jasmine Johnson, Class of 2020  
UConn / Day of Pride Scholarship



Eduardo Pagliaro-Haque, Class of 2020  
Yale University

### VIRTUAL VISITING OPPORTUNITIES

Coffee and Campus Tours  
April 8 / Various Time Slots  
May 13 / Various Time Slots

Or call  
203.752.2610  
to schedule a  
private tour.



### HAMDEN HALL COUNTRY DAY SCHOOL

Educating students in PreSchool through Grade 12  
1108 WHITNEY AVE. HAMDEN, CT. 203.752.2610  
WWW.HAMDENHALL.ORG TRANSPORTATION AVAILABLE

# Weller Funeral Home

The oldest Jewish family funeral home serving the  
Jewish community of greater New Haven with dignity since 1881

## Danny Weller Klein

Fourth generation funeral director at Weller Funeral Home

424 Elm Street, New Haven, CT 06511

203-624-6912 www.wellerfuneralhome.com

**The Congregation Mishkan Israel**  
785 Ridge Road  
Hamden, CT 06517

Next Bulletin Deadline 3/1/21

**Time Value Data**  
Deliver No Later than March 1

Non Profit Org  
US POSTAGE  
PAID  
Permit #156  
New Haven, CT

**THE CONGREGATION MISHKAN  
ISRAEL BULLETIN**

March/April 2021 Series 105, #4  
THE CONGREGATION MISHKAN ISRAEL  
785 Ridge Road, Hamden, CT 06517  
Phone: (203) 288-3877 Fax: (203) 248-2148  
<http://cmihamden.org>

**Rabbi Brian P. Immerman** x236

[rabbi@cmihamden.org](mailto:rabbi@cmihamden.org)

**Rabbi Emeritus Herbert N. Brockman, Ph.D. D.D.** x243

[cmirabbi@cmihamden.org](mailto:cmirabbi@cmihamden.org)

**Cantor Arthur Giglio** x244

[cantorg@cmihamden.org](mailto:cantorg@cmihamden.org)

**Merav Canaan**, Temple Administrator x241

[mcanaan@cmihamden.org](mailto:mcanaan@cmihamden.org)

**Michelle Goldstein**, Religious School Director x237

[mgoldstein@cmihamden.org](mailto:mgoldstein@cmihamden.org)

**Alex Forte**, Director of Youth Activities

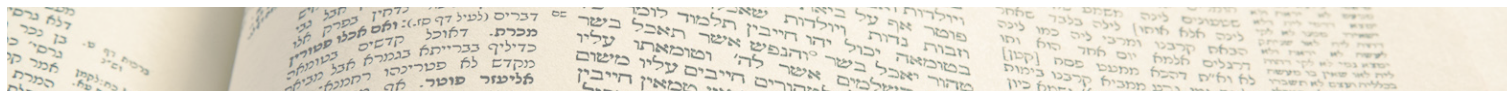
[mityor@cmihamden.org](mailto:mityor@cmihamden.org)

**Susan Witten Nason**, Early Childhood Director x245

[sperry@cmihamden.org](mailto:sperry@cmihamden.org)

**Michael Dimenstein**, President

[president@cmihamden.org](mailto:president@cmihamden.org)



## MARCH WORSHIP SERVICES & STUDY

### SHABBAT KI TISA

Exodus 30:11-34:35

#### Friday, March 5

6:00 p.m. Evening Service

#### Saturday, March 6

9:00 a.m. Torah Study

10:30 a.m. Tot Shabbat

### SHABBAT VAYAKHEL-PEKUDEI

Exodus 35:1-40:38

#### Friday, March 12

6:00 p.m. Evening Family Service

#### Saturday, March 13

9:00 a.m. Torah Study

### SHABBAT VAYIKRA

Leviticus 1:1-5:26

#### Friday, March 19

6:00 p.m. Evening Service

#### Saturday, March 20

9:00 a.m. Torah Study

### SHABBAT TZAV

Leviticus 6:1-8:36

#### Friday, March 26

6:00 p.m. Evening Service

#### Saturday, March 27

##### Erev Pesach

9:00 a.m. Torah Study

10:30 a.m. Tot Shabbat

### PESACH

#### Sunday, March 28

10:30 a.m. Passover Morning Service

6:00 p.m. Second Night of Passover Seder

*Service times are subject to change. For the most up-to-date information and to hear sample tunes from services, go to <http://cmihamden.org/worship>.*