



The Congregation Mishkan Israel

More than a place. We're a community.

June 2019

Series 103 Number 9



JUNE 2019



ONEG SHABBAT & PULPIT FLOWERS

One of the nicest ways to honor a special occasion is to sponsor an Oneg Shabbat and/or pulpit flowers for services. Congregation Mishkan Israel is grateful to the following Oneg Shabbat/Flower Sponsor

June 22 – Flowers & Oneg are given in celebration of Rachel Danishevsky becoming a bat mitzvah with love from Mom, Dad, and Rebecca.

To arrange for your sponsorship, contact Sarah at (203) 288-3877 or slegassey@cmihamden.org.



JUNE & JULY BIRTHDAY BLESSINGS

Celebrate your birthday at Family Service June & July birthdays will be celebrated at the Family Service on Friday, June 7 at 6:00 p.m. If your child will be attending services in their birthday month, please call Tamara at 203-288-3877.



Annual Meeting Friday, June 7

The CMI Community is invited to come together

Evening Service
6:00 p.m.

—
*Annual Meeting & Congregational Potluck Dinner**
7:00 p.m.

*We invite everyone to bring a side or salad to share with the rest of the community.

CMI • 785 Ridge Road Hamden, CT 06517 • 203-288-3877 • www.cmihamden.org

TODAH RABAH SHABBAT WELCOME TEAM

Thank you to our greeters:

May

- 3 Sheila Greenstein, Karen Kimball
- 4 Karen Kimball, Michael Dimenstein
- 10 Judy and Chuck Naden
- 11 Martha Weisbart
- 17 Joan Lipin, Ivey Cooley Karen Kimball
- 18 Karen Kimball
- 24 Marilyn Rittner, Karen Kimball
- 25 Karen Kimball
- 31 Hedda Rubenstein, Michael Dimenstein

For more information about our Team of greeters, contact co-chairs Karen Kimball at kjkimball@sbcglobal.net or Richard Shaw at rshaw@snet.net.

PROTOCOL FOR MI SHEBERACH (HEALING PRAYER) LIST

To add or delete a name to our Mi Sheberach (healing prayer) list that is read at services please call Rabbi's office at (203) 288-3877. You must have permission from the individual to have their name read in public. (There is always the Hebrew option as well.) Names will remain on the list for one month unless renewed or requested to be deleted. If you join us for services you can add a name that evening by signing in with the greeter prior to the beginning of services.

CMI IS GOING GREEN

We at CMI decided that this is a great time to follow our passion to leave a "green" thumbprint as a congregation. We have considered our role in the massive use of paper that we generate yearly and find this is a perfect time to "Go Green". We have implemented our "paperless" monthly bulletin as part of a series of eco-friendly initiatives here at CMI. Please go to <https://cmi.wufoo.com/forms/miwucmp0trirl5/> to let us know if you wish to discontinue receiving the printed version of the monthly bulletin via mail or call the office at 203-288-3877. We will continue to mail a paper copy of the bulletin to your home if you do not opt-out.

Thank you.



A MESSAGE FROM THE RABBI

Rabbi Brian P. Immerman

On June 8th we will gather for an exciting evening of prayer and study in celebration of Shavuot, when we rejoice in the receiving of the Torah. We will study the book of Ruth and read the Ten Commandments. In some communities, Jews stay up all night long studying our sacred texts to simulate the anticipation that our ancestors felt while standing together at the base of Mt. Sinai. Jenny and I will be studying Torah and eating cheesecake, for sure, but will also be filled with anticipation of the arrival of the newest member of our family.

Most of our community now knows that Jenny and I are expecting our second child at the end of June and we cannot wait to introduce you. Just as when we were preparing for Maggie, I am taking these last few moments to prepare myself to again witness the world anew through the eyes of a new born. I will never forget what it was like when Maggie discovered her hands, her laugh, Tazo our cat, and now she is running around the house asking the name of every single object so that she can share her discoveries out loud.

In Jewish tradition, every morning when we wake up we chant the nissim b'chol yom, blessings for our daily miracles. We give thanks for the ability to wake up, prepare ourselves for our days, while giving thanks for the miracles that accompany each act. We are taught to re-discover all of the blessings in our lives. Each sunrise allows us to appreciate all of these gifts while also giving us the potential to bring our world one step closer to perfection through acts of loving kindness, g'milut chasadim.

Shavuot provides a time for us to recommit ourselves to the study of Torah and as we do so we must also recommit ourselves to acting as well. In Pirkei Avot, sage wisdom from 2,000 years ago, Rabban Gamliel taught: "And all study of the Torah in the absence of a worldly occupation comes to nothing in the end... (2:2)" It is important that we learn how to apply the values that we learn through study to our daily lives as we seek meaning and purpose in our world. When we live by our core values we bring ever more light into our world.

Near the end of June we will celebrate the day of the year filled with the most light. As we celebrate

our Torah and welcome a new life into the world, I pray that we both rejoice in and share the light that illuminates our own lives and our community. I look forward to celebrating with you during this joyous time and in many seasons to come.

IS SOMEONE IN THE HOSPITAL?

Area hospitals are not permitted to notify us when a congregant has been admitted. If you know of a congregant who is in the hospital and would appreciate a call or visit, please contact Rabbi Immerman's office at (203) 288-3877 or rabbi@cmihamden.org

CANTOR'S CONCERT 2019





CANTOR'S NOTES

Cantor Arthur Giglio

June 28th, 6 PM "A Klezmer Shabbat" – Mark your Calendars!! David Chevan and the Nu Haven Kapelye will return for another one of their legendary Shabbat services.

If you have not attended one of these services you owe it to yourself to come. It is a service of love, community, joy and hope. Yes, all of that does come from a Klezmer Shabbat so please come for what is a truly spiritual Shabbat. Did you know Klezmer is a Hebrew word? It combines the words "kley" (instrument) and "zemer" (singing) and referred to musical instruments in ancient times. It became attached to Jewish folk musicians dating back to the 16th Century. According to an article by Hervé Roten, 'The word "klezmer" - that we use today – was pejorative: it meant a "bum" who plays vulgar music. Klezmers were not really appreciated. When they played, each one added harmony, the one passing by in his head, depending on his talent, his inspiration. It wasn't very valuable; actually it had no value at all'. Nowadays, that has all changed and the word has come to signify very skilled musicians playing wonderful traditional Jewish music from Eastern Europe. Here at CMI we are blessed to have David Chevan who for the last 20 years gave us our own Klezmer Orchestra and endless joy! The end of June will mark the first year under the guiding hand of Rabbi Immerman. It has been a wonderful experience for myself to have a guitar toting Rabbi next to me on the Bimah. Rabbi Immerman is an inspiration for me to study harder and get my guitar up to speed (Maybe you can teach this old dog new tricks!). We have introduced new music to services and have kicked up the joy factor a few notches. It has been especially fun for me as I am sure it has been for you. Our Cantor's Concert Fundraiser was a phenomenal success and has left me wondering, "How am I going to top that next year!". We will just have to wait and see! I have loved Rabbi Immerman's brilliant and insightful sermons coupled with his passion for social justice. He has taken up the torch of our illustrious past Rabbis and is continuing to lead the fight against the injustices that social inequality that has reaped on all of our lives. CMI still has its share of present

Cantor's Notes ..continued on page 5



PRESIDENT'S MESSAGE

Sarah B. Greenblatt

It is hard to believe that almost one year has passed since I became President of Congregation Mishkan Israel - what a year this has been! As I began my service to CMI, we

welcomed our new spiritual leader, Rabbi Brian Immerman, his wife Jenny and their daughter Maggie. As we head into year two of our tenures, Rabbi Immerman and his wife Jenny will welcome their second child. It certainly will continue to be a time of change for his family and for our congregation.

Over the past year, I have worked in a sacred partnership with lay leadership, clergy and professional staff to assess our spiritual, programmatic and fiscal strengths and needs - a process which has helped the Board identify priorities and set goals for moving forward.

Not surprisingly, our strengths lay in our spiritual, social justice, music and religious and early childhood education programs. And not surprisingly, our needs revolve around the fact that dues alone cannot sustain our congregation at the levels we have been operating. Through our budget process we have closely examined ways we can both increase revenues and manage our program and building operations more cost effectively.

In the coming year, we will continue to build our culture of giving by encouraging our congregants to reflect on what you love about CMI and turning that into a reason to give your time and money. Most pressing are major repairs needed for our nearly 60-year old building.

Over the summer, I look forward to talking with congregants about ways you can volunteer to chair or serve on a committee and ways you can make financial commitments that will sustain our vibrant community now and in the future. As we move from generation to generation of CMI's remarkable history, each one of your contributions will matter.

BROTHERHOOD NEWS

On behalf of the Brotherhood of Men and Women, I would like to extend a sincere thank you to our members for their support this year. We kicked off the year 2018-19 with a wonderful trip to Ellis Island, which included a memorable stop at the 9/11 Memorial. We also brought back our popular Deli/Comedy night for the 13th time while enjoying the delightful musical talents of David Chevan and his band, Bassology, to kick off the evening.



At the April 12 Brotherhood Service we were thrilled to honor Marsha Moses, this year's recipient of the Alan Lakin Award of Merit, for her dedication and leadership during CMI's transition to our new spiritual leader, Rabbi Immerman. On the same evening, we installed the members of the BMW's Board: Ken Seltzer (President), John Keegan (Vice President), Larry Schaefer (Treasurer), Rob Homer (Secretary), Joan Lakin, Sara Ruggiero, Ellyn Kaufman, Brenda Arovas, Bob Nobleman, Jonathan Alderman, Larry Rosenthal, Matt Kerzner, Bruce Birenbaum, and Michael Ross (immediate past president). The BMW's work of supporting CMI BMW would not be possible if it were not for their steadfast energy and dedication. I feel fortunate to be working with such a wonderful group of men and women.

Our coffee shop had another successful year. Every Sunday we greeted staff, students, parents, and visitors with delicious treats and coffee. Thanks to their support, we will be able to donate approximately \$1,500 in scholarship funds to the religious school. In addition to donations to the religious school, our Tzedakah fund will afford us the opportunity to make several donations to deserving agencies and entities within the New Haven community. We will announce the recipients in the next newsletter.

Finally, while summer is about to begin, the BMW Board is busy planning and preparing for next year. Please be on the lookout for our 2019-2020 membership letter and information about another trip and other programs throughout the year. Please do not hesitate to contact us if you are interested in learning more about the BMW or to express an interest in joining our organization at brotherhood@cmihamden.org.

Have an enjoyable summer!

Ken Seltzer

President, Brotherhood of Men and Women

Cantor's Notes ..continued from page 4

and future challenges but we have a staff and community committed to making it work and where there is a will, there is a way. I cannot help but believe in a future full of hope and that our community will be instrumental in its success. Thank you for another year of being your Cantor. I know I speak for my family and myself when I say I have been immersed in blessings when I was brought into the fold of my CMI family.



Klezmer Evening Service

Featuring

David Chevan
&
The Nu Haven
Kapelye

Friday, June 28
6:00 p.m.

CMI • 785 Ridge Road Hamden, CT 06517 • 203-288-3877 • www.cmihamden.org

MORE NEWS TO USE



NURSERY SCHOOL NEWS

Susan Witten Nason
Early Childhood Director

We are very excited about our summer.

We have a lot of fun things planned at our summer camp.

We will have a blast with Dinosaur Days, Kitchen Capers, Wet and Wild, Fun and Fitness, to name a few of our camp themes.

We look forward to watching our flowers and vegetables growing in our garden.

If you need help weeding your P'eah plot, let us know. We just might be able to help!

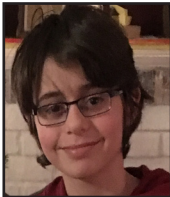
Have a great summer.



JUNE B'NAI MITZVAH



Rachel Danishevsky
 June 22, 2019
 Daughter of Michael & Nicole Danishevsky



Samuel Rosenberg
 June 29, 2019
 Son of Sarah Bolitzer & Steve Rosenberg

RELIGIOUS SCHOOL 2019-2020

Pre-Register online! We've gone live!!! Please go to <https://cmireligiousschool.wufoo.com/forms/m18ic7501b4jnj1/> and register your child(ren) for school in the fall. No payment is due at this time. It will be included in your invoice in July.



RELIGIOUS SCHOOL NEWS

Michelle Goldstein
Religious School Director

What a wonderful school year this has been! We have experienced a new T'fillah program with Rabbi Immerman, done countless parent programs, had our first ever Parent

Education Series and began Junior Youth Group events! This year has been filled with smiles, laughter, learning and joy. None of this is possible without the constant support of our incredible faculty and community.

Thank you to our teachers who work tirelessly throughout the year to create engaging and informative lessons that allow our students to be invested in their experience. It is this dedication which drives our desire to continue to improve and expand our programming to meet our students needs. Thank you also to our parents who continue to bring your children (sometimes begrudgingly) to school each week. It is your dedication to your child(ren)'s education that allows us to continue to program. You are our partners in the truest sense of the word and I appreciate your trust in this process. Another thank you goes out to the Brotherhood of Men and Women who create a wonderful coffee shop space and donate their earnings to provide scholarships for our youth. As well, the Brotherhood has always been committed to the betterment of our school and we thank them for their support.

As for me, the hallways are going to get quieter and I am going to miss you all over the summer! I will be in the office creating new curriculum, developing new programming and expanding the things we love to make them stronger! I am so appreciative of all of you, our community and families who are part of this journey! Wishing you a safe, warm and wonderful summer! See you in September!

MITYOR

Hello from MITYOR! It has been a very fun and different year for our CMI youth group, and I'd like to thank all of the parents and teens for your support in 5779! We had some very successful programs, and it was wonderful for me to spend so much time with our amazing teens. I look forward to 5780 and the exciting programs we are cooking up for our fabulous high schoolers. Have a great summer, everyone!

RITUAL COMMITTEE NEWS

CMI Summer Shabbat Services:

Starting Friday, June 28 and running through the end of August, our Friday night Shabbat services begin at 6:00 p.m. and Saturday morning services at 10:30 a.m.

They are led by members of our CMI congregation. Conducted in the Chapel, these lay-led services provide an intimate, diverse, rewarding, creative and educational opportunity to pray together. We encourage you to sign up to lead a service or provide musical accompaniment. Contact Sarah Legassey at slegassey@cmihamden.org to schedule a service date .

A Summer Shabbat Service teaching session with Rabbi Immerman will be held on Tuesday, June 11 at 7:00 p.m.



MINS School & Daycare

MINS is unparalleled in flexibility and providing a loving, multi-cultural experience with a Jewish curriculum. Reflecting the CMI mission, the School incorporates social justice (tzedakah) projects. The school is open to the community. Reserve your spot today.

Fall registration is now available.

For more information, contact Director Susan at (203) 288-2375 or sperry@cmihamden.org.

A \$100 non-refundable registration fee is required per family for Fall.

CMI • 785 Ridge Road Hamden, CT 06517 • 203-288-3877 • www.cmihamden.org



SUMMER CAMP

Mishkan Israel Nursery School is taking registration for Summer Camp. Camp runs June 10 - August 21. Sign up for as many weeks as you need. The Camp serves children 6 weeks to kindergarten. Select from among 2, 3, 4, and 5 day options, both part time and full time; 7:30 a.m. - 5:30 p.m.

For more information, contact Director Susan at (203) 288-2375 or sperry@cmihamden.org. Enroll online at www.cmihamden.org

A \$100 non-refundable registration fee is required of new families for Summer Camp.

Registration for Summer Camp Open

CMI • 785 Ridge Road Hamden, CT 06517 • 203-288-3877 • www.cmihamden.org



CMI PE'AH GARDEN

Dig in the dirt, make new friends (or chat with old ones) and be part of our Pe'ah Garden. You do not need to be an experienced gardener to participate. Volunteers are needed to help weed, harvest and to transport vegetables to the soup kitchen.

Need more information? contact Madeline Ravich at mcravich@gmail.com

JOIN US

Help the CMI community in our mission. Half of the produce is grown for local soup kitchens & half is for gardeners to enjoy fresh herbs and vegetables at home.

CMI • 785 Ridge Road Hamden, CT 06517 • 203-288-3877 • www.cmihamden.org

JUNE CALENDAR

JUNE 2019

| SUNDAY | MONDAY | TUESDAY | WEDNESDAY | THURSDAY | FRIDAY | SATURDAY |
|--|--|---|--|-----------|---|---|
| | | | | | | 1 9:00 a.m. Torah Study 10:30 a.m. Morning Service celebrating the Bar Mitzvah of Joshua Wildstein |
| 2 | 3 | 4 5:30 p.m. SAC Committee Meeting | 5 12:15 p.m. Intermediate Hebrew | 6 | 7 MINS last day 5:30 p.m. Early Oneg 6:00 p.m. Family Service & Birthday Blessing 7:00 p.m. Annual Meeting & Congregational Potluck Dinner | 8 9:00 a.m. Torah Study 10:30 a.m. Morning Service 6:00 p.m. Erev Shavuot Service |
| 9 Shavuot 10:30 a.m. Shavuot Morning Service with Yizkor | 10 First Day of MINS Summer Camp | 11 7:00 p.m. Summer Service Workshop | 12 12:15 p.m. Intermediate Hebrew | 13 | 14 5:30 p.m. Early Oneg 6:00 p.m. Evening Service | 15 9:00 a.m. Torah Study 10:30 a.m. Morning Service |
| 16 | 17 | 18 | 19 12:15 p.m. Intermediate Hebrew | 20 | 21 5:30 p.m. Early Oneg 6:00 p.m. Pride Shabbat Service | 22 9:00 a.m. Torah Study 10:30 a.m. Morning Service celebrating the Bat Mitzvah of Rachel Danishevsky |
| 23 | 24 | 25 | 26 12:15 p.m. Intermediate Hebrew | 27 | 28 5:30 p.m. Early Oneg 6:00 p.m. Klezmer Evening Service | 29 10:30 a.m. Morning Service celebrating the Bar Mitzvah of Sam Rosenberg |
| | | | | | | 30 |

June 7

Elizabeth Joan Baratz *
 David D. Berdon
 Harris Jack Berman *
 Donald Blumenthal *
 Anna K. Brandriss *
 Susan Caminear
 Albert Cheskis
 Anne Cohen
 Merrill Farber
 David Flit
 Samuel Fox *
 Annette Forman Friedman *
 Martha Goller
 Violet P. Goodman *
 William R. Green *
 Jerome F. Greenwald *
 Harold H. Hahn Sr. *
 Hannah Hanina
 Abram Hartenstein *
 Jack Hauser *
 Molly Kamens Horton *
 Lucile Marqusee Jacobs *
 Alexander Jacoby
 Morris Karmasin
 Sol Kean *
 Rose Shelling Kelsey
 Julius Kornicker *
 Hyman Krug
 Stanley Kruger
 Max Langrock *
 William Levine
 Roslyn Shapiro Lewisohn *
 Leo Links *
 Pearl R. Lipsky
 Soltan Moskovits *
 Abe R. Olinsky
 Elliott Perlman
 Milton E. Rosenthal *
 Vivian Hubelbank Ruth
 Jean N. Scheps
 Nathan Schreiber
 Helen Chargar Schwartz *
 Bernard Shoninger *
 Lena Ticotsky
 Gisyta Tziferman
 Laurel Vlock
 Dr. Milton Wallman
 Isabelle Walton
 Solomon Weil *
 Tessie Rozen Weiss
 Harry Wisan

June 14

Ida Alpert *
 Edward Bailey
 James Bradbury
 George Brand
 Estelle Lyons Dryfus *
 Matilda Eisenberg
 Marie Eisner *
 Herman Gold
 Elizabeth Green *
 Charles Paul Huether
 Samuel Karlan
 Nathan David Kaufman
 Annette Knapp *
 Hirsch Koch *
 Rosa Lang Kornicker *
 Arthur Kramer
 Blanche Kramer
 Celia Katz Mailhouse *
 Hannah Marcus
 Eli Milner
 Matilda Myers *
 Doris Nasper
 Richard W. Opper *
 Sydelle Perlman
 Jacobi Press
 Sonya H. Rashba
 Norman Redlich
 Abraham S. Rosenfeld *
 Marci Sellers
 Rifka Shapiro
 Heloise S. Shoninger *
 US Army PFC Eric Daniel Soufrine
 David Teitelbaum
 Henrietta Teitelbaum
 Evelyn Reich Wareck *
 Rachel F. Weiner *
 Nancy Ruth Kruger Williams *
 Dr. Paul Winer *
 David Zakar

June 21

Dr. R. Scott Borrus
 Harriet Harris Breslav *
 Arthur Caskill
 Sarah E. Chain *
 Morton Harold Cohen *
 Lillian Kravitz Dimenstein
 Larry C Franken *
 Philip Freedman
 Minnie Chauser Gold
 Steven Grove
 Jacob Haber *
 Louis Hamerman *
 Alfred Klein *
 Edna Knopp
 Morris Krug
 Zelda Chernoff Lapidés
 Selma M. Levine
 Gerald E. Marcus
 Marion Marcus
 David Mersey *
 Norma Neufeld *
 Rae Paul *
 Ronald J. Portugal *
 Rose Reinstein
 Emil Schoenberger *
 Anne Shapiro *
 Rae Shapiro
 Sadye Comins Shapiro *
 Prof. Albert J. Solnit
 Anna Heitman Stein *
 Anna Traiman
 Theodor Tuckell
 Florence Walman *
 Alfred W. Weil *
 Charlotte Solomon Weinstein *
 Peggy Miller Zala

June 28

Edward I. Ackerbaum
 Morton Adams *
 Irving Berkowitz *
 Louis Goodman Black *
 Bella Brand
 Helen D. Breslav *
 Sam Brody
 Richard H. Cole
 Jacob J. Cooley *
 Ralph Egel *
 Muriel Esposito
 Morris Farber *
 Edith Feldman
 Meyer Forman
 Marjorie G. Frankenberger
 Lewis J. Freedman *
 Dr. Nathan A. Goldstein *
 Elaine Klinger Gray *
 Louis Heller
 Brett Hellerman
 Fred Hoffman
 Bessie E. Hoffman *
 George Kasterbaum
 Rabbi Abraham J. Klausner
 Anne Isaacs Kornicker *
 Seymour "Ted" Lakin
 Eunice Rosenberg Lenz *
 Celia Levin
 Florence Doduck LeVine *
 Julia Levine
 Elsa Guttman Links *
 Levi Lyons *
 Mae Lapidés Merliss *
 Jonathan Milikowsky
 Henrietta Muhlfelder *
 Marion Press O'Brasky *
 Ruth Rennert
 Fanny Rozovsky *
 Lawrence K. Schnadig *
 Lottie Siperstein
 Monty Soufrine
 Dr. Charles Steiner
 Marcia Teitelbaum
 Harry Weissman *

In Sympathy

Nancy Horowitz on the passing of her mother, Regina Heller

JCARR ASSISTS FAMILIES TO BUILD NEW LIVES

Since January 2016, JCARR (Jewish Community Alliance for Refugee Resettlement) has helped four refugee families resettle in our community. When JCARR welcomes a new family, our approach is to “do with,” not to “do for” them. We work to build a partnership with each family and to focus on their goal of becoming self-reliant within 6-12 months of their arrival. Creating a home, learning English, understanding our culture, and gaining long-term employment are key to developing the capability to function independently. We deal with challenges and we celebrate accomplishments together.

Among the challenges is learning English. Children and adults alike take classes and most have developed basic proficiency in English. Everyone able to work has gotten a job. Two of the fathers unfortunately suffered injuries at work and have been dealing with the frustrations and bureaucracy of Workers Comp. Their wives have both started their own catering businesses, which significantly helps the families maintain financial stability. Those that have engaged them to cater family gatherings and larger events are enthusiastic about their experience. Learn more on their websites at <https://khadijasweetsetc.wixsite.com/aleppo/menu> and <https://aminahscuisine.wixsite.com/catering>.

The families are becoming integral members of the community. From the day of their arrival on election day the Aldabaan’s story was featured in New Haven writer Jake Halpern’s weekly Welcome to the New World, a Pulitzer Prize-winning graphic piece in the New York Times. They are frequently invited – by private individuals, congregations of various faiths, community groups, as well as radio, TV, print and on-line news organizations - to speak about their life. One such interview was done by NBC news. <https://www.nbcnews.com/video/what-happens-to-families-still-split-by-the-travel-ban-1454662723959>. They prefer not to talk about the sadness of their past, but to focus on their story since they arrived in Connecticut.

Families who have been here for two years are now volunteering with JCARR to help a couple of senior citizens who arrived from Iraq in January, exemplifying the strength of our partnership in helping families build new lives.

Here are some ways that you can be involved:

To see what Family’s current needs, please go to <http://signup.com/go/gGdBaTG>.

Your financial support will enable us to assist more refugee families. You can donate online at: <https://jewishnewhaven.org/refugee-resettlement/give>. Or, send checks payable to The Jewish Federation, with JCARR in the memo line, to The Jewish Federation, 360 Amity Road, Woodbridge, 06525; Attention: Amy Holtz. We greatly appreciate your generous donations!

For more information please contact Sue Millen at smillen179@sbcglobal.net or Lina Lawall at lalawall250@gmail.com

PAY ONLINE!

Did you know you can pay CMI directly from CMI’s website or weekly e-news? The convenience is amazing! You can pay your Dues, Religious School, Nursery School, Make a donation, and special events. Go to: <http://cmihamden.org/who-we-are/giving/>.

CMI LIVESTREAMS SERVICES

While we always look forward to sharing the sabbaths and holy days together, we are pleased to announce we now livestream services so that members and friends who are unable to attend in person due to health or distance can still enjoy services and the holidays. Regular services are available for viewing on your computer or mobile device. Simply go to <http://cmihamden.org/worship/livestream/>. Copies of past services are available under the Archived Videos tab. If you do take advantage of this service, please let us know of your experience. At the same time, we look forward to seeing you in person again, soon.

The initiation of livestreaming was made possible in part by a grant from the Jewish Home Building Fund Corporation.

“...who donates much to charity
becomes the richer for it...”

Zohar iii 110b

April 1 – May 1, 2019

ENDOWMENT FUNDS: (invested to generate annual income for specific purposes)

General Fund

| | |
|--|--|
| Carolyn Kone & Allan Rubenstein | In Memory of ESTELLE A. KONE |
| Peter & Marcy Rathman Edith Rotkopf | MARTIN SELIGMAN RACHEL ROTKOPF |

Cemetery Fund

| | |
|----------------|---------------------------------------|
| Larry Lazaroff | In Memory of LINDA LAZAROFF |
|----------------|---------------------------------------|

Robert Goldberg Peace & Justice Fund

| | |
|-----------------------|--------------------------------------|
| Jay & Carol Charkow | In Memory of IRENE NAFTALI |
| Jay & Carol Charkow | VALENTINE NAFTALI |
| Nancy Alderman Kramer | MORRIS ALDERMAN |

TARGET AREAS: (meant for immediate use of funds)

General Fund

| | |
|---|---|
| Len & Stephanie Farber Sarah B. Greenblatt | In Memory of VIOLET FARBER REGINA HELLER |
|---|---|

Hunger

| | |
|---------------|--|
| Dana Friedman | In Memory of THELMA FRIEDMAN |
|---------------|--|

Music

| | |
|--------------------------|--------------------------------------|
| Brenda Arovas | In Memory of LUCY GOLDFARB |
| Neil & Marlene Greenberg | WILLIAM BARKIN |
| Peter & Claudia Nielsen | MARION SILVERBERG |
| Richard & Marie Shaw | JENNIFER SHAW |

Nursery School

| | |
|-----------------------|--------------------------------------|
| Michael & Erika Forte | In Memory of ABBEY PERLMAN |
|-----------------------|--------------------------------------|

Religious School

| | |
|---------------------------------------|--------------------------------------|
| The Sorochans & Zhozefina Averbukh | In Memory of JOSEPH HANINA |
| The Sorochans & Zhozefina Averbukh | MOSHE TZIFERMAN |

Social Action

| | |
|----------------|---|
| Betsy Barnston | In Memory of JACK DUDLEY BARNSTON |
|----------------|---|

Rabbi Immerman's Discretionary Fund

| | |
|-----------------------|---|
| Lindy Lee Gold | In Appreciation of RABBI IMMERMAN |
| Rabbi Daniel Schaefer | RABBI IMMERMAN |
| Joan Lipin | In Memory of ANNA LIPIN |
| Joan Lipin | ABRAHAM LEVIN |
| Howard & Bobbi Lurie | MICHAEL HOZER |
| Jeffery Smith | ROBERT SMITH |

2018-2019 CHAI APPEAL

It is with immense gratitude that we acknowledge those families who as of this publication have responded to the menu of additional giving opportunities with a commitment above their standard dues and to the holiday appeal.

Our Pacesetters:

Michael Dimenstein & Hedda Rubenstein

Sarah B. Greenblatt

Judith Hahn**

James Horwitz & Sandra Allison*

Rabbi Brian and Jenny Immerman

Ruth Koizim

Joan Lakin

Sandra Milles**

Ben Ledbetter & Deborah Freedman*

Lance Sauerteig

Larry Schaefer & Lina Lawall

Louis Scheps

James Shure

Mark & Judith Sklarz

Jeffrey & Clarky Sonnenfeld

Corey Stone & Sue McDonald

Andrew Wingate & Tanya Bilchik

*Double Chai

**Torah Circle

Additional Gifts:

Baracha: David & Allison Cohen, Andrew & Eileen Eder Kavod: Batja Astrachan, Stuart & Hedy Bush, Floyd & Letty Caplan, Matthew & Michele Cohen, Jack & Harriet Fast, Adam Hittelman & Michelle Serlin, Alvin K. Klevorick & Susan E. Bender, Meir & Barbara Kryger, Susan Oberstein, Jim & Cis Serling, Rabbi Howard Sommer & Dr. Linda Waldman Shalom: Betsy Barnston, David & Julie Chevan, John & Frances Gordon, Lawrence & Roberta Harris, Herbert & Arlyne Hershenson, Marc Wallman & Cynthia Carr, Jimmy Shure, Bert & Martha Weisbart Simcha: Jason & Suzanne Alderman, Astmann Family, Alice Baxter, Irwin Braverman, Robert & Tamara Epstein, Bernice Giskin, Saul & Sonya Goldberg, Allan Hillman & Penny Marcus, John & Susan Hoffmann, Robert Homer, Joan Lipin, Sanford & Carol Schreiber, Gennadiy Sorochan, Barbara Wareck, Marian Wexler, Richard & Marcia Witten Other: Jay & Carol Charkow, Len & Betsy Grauer, Neil & Marlene Greenberg, Joel & Lucinda Kramer, George & Diane Lublin, Howard & Bobbi Lurie, Shirley Pripstein & Joanne Tepp, Norman Rashba, Dr. Jeffrey Smith & Edith Rotkopf, Rabbi Steve & Caryl Steinberg

LIBRARY NEWS



Naamah / by Sarah Blake
White Rose / by Kip Wilson
Wunderland / by Jennifer Cody Epstein
The Art of Leaving / by Ayelet Tsabari
 Please return books you have borrowed

TO OUR READERS

If you use a service from one of our advertisers, please inform them that you are doing so because you saw their ad in the Bulletin. If you would like to place an ad in the Bulletin, Contact Sarah at

(203) 288-3877

CONNECT WITH CMI ONLINE

Keep up-to-date with all CMI events. Check our website regularly at <http://cmihamden.org>. You will find announcements, upcoming events, calendar, worship service times and contact information. New members can join the congregation and everyone can register for religious school and nursery school, pay your bills and make contributions.



And don't miss the slideshow of recent events – it changes frequently so check back often!

We have several e-newsletters to keep our congregational family informed of upcoming events, recent passings and school events. If you're not currently receiving our e-newsletters you can get on the distribution list.

CMI is on Facebook. Click the icon on our website or go to <http://www.facebook.com/cmihamden>. You'll want to "like" us.

CMI Religious School is on Facebook. Go to <https://www.facebook.com/cmireligiousschool> and "like" us. We would like to keep you up-to-date with all Religious School events.

Weller Funeral Home

The oldest Jewish family funeral home serving the Jewish community of greater New Haven with dignity since 1881

Danny Weller Klein

Fourth generation funeral director at Weller Funeral Home

424 Elm Street, New Haven, CT 06511

(203) 624-6912

www.wellerfuneralhome.com



ROBERT E. SHURE, INC.

— FUNERAL HOME —

Dedicated to the Dignity and Respect of Tradition.

543 George Street, New Haven, CT 06511

Robert E. Shure
Founder

203-562-8244
shurefuneralhome.com

James M. Shure
President

Larry Lazaroff **Arnold's Jewelers**
The North Haven Diamond Center

117 Washington Avenue
North Haven Shopping Center
North Haven, CT 06473

Phone: (203) 239-4291
Fax: (203) 230-8138
Email: laztwo@aol.com
Web: TheArnoldsJewelers.com

Ear Nose and Throat
Specialists of Connecticut

David I. Astrachan, M.D.
Craig S. Hecht, M.D.

David I. Astrachan, M.D.
Ear, Nose and Throat Medicine • Head and Neck Surgery

Phone 203.248.8409
Fax 203.281.2905
www.entct.com

This coupon entitles you to a
FREE Hearing Assessment*
& **Oticon Opn™ Consultation.**
exp. 8/31/18

**ENRICHMENT OF THE
WORSHIP & YOUR LIFE.**

*Serving CT Communities for over 25 years
with 6 locations to better serve our patients.*



**Hearing, Balance
& Speech Center**

2661 Dixwell Avenue Hamden, CT 06518

203.287.9915

info@hearingbalance.com | hearingbalance.com

*The purpose of this hearing assessment and demonstration is to determine if the patient(s) may benefit from using hearing aids. Any determination made is not a medical diagnosis. Information within this offer was correct at time of printing.

What will your Jewish Legacy be?



CREATE A
JEWISH LEGACY
GREATER NEW HAVEN

Create your legacy for Congregation Mishkan Israel



For more information about Create A Jewish Legacy, contact Lisa Stanger,
(203) 387-2424 x382, lstanger@jewishnewhaven.org,
www.newhavenjewishfoundation.org | www.jewishlegacynewhaven.org

MONUMENTS ERECTED IN ALL CEMETERIES

NOLAN'S
HAMDEN MONUMENT COMPANY
LICHTENSTEIN COMPANY

323 WASHINGTON AVE., HAMDEN, CT 06518
(203) 288-8486 • (203) 287-1593
CT Toll Free Only (800) 852-8865 • Fax (203) 287-1593

JOHN R. NOLAN
MIACHAEL F. NOLAN nolanmonuments@att.net

THE TOWERS

Your #1 Choice in Senior Living!

For information or to schedule a tour call
Rebecca Goodman-Olshansky
(203) 772-1816, ext. 250 rebecca@towerone.org

Like us on Facebook!
Tower One Tower East



THE SMOKO AGENCY
Insurance

2661 WHITNEY AVENUE
HAMDEN, CONNECTICUT 06518

RONALD L. SMOKO, JR.
ACCOUNT EXECUTIVE

(203) 281-6576
FAX (203) 248-5162

ALTMAN
ORTHOPAEDICS
a division of **part**

Mark P Altman MD

*Specializing in surgery of the hand, wrist, shoulder, and elbow
Orthopaedic fracture care*

203.408.2700

Offices in Hamden and Guilford

DISCOVER THE HAMDEN HALL EXPERIENCE



Coffee and Campus Tours

Thursday, April 11 / 9-10:30 a.m.

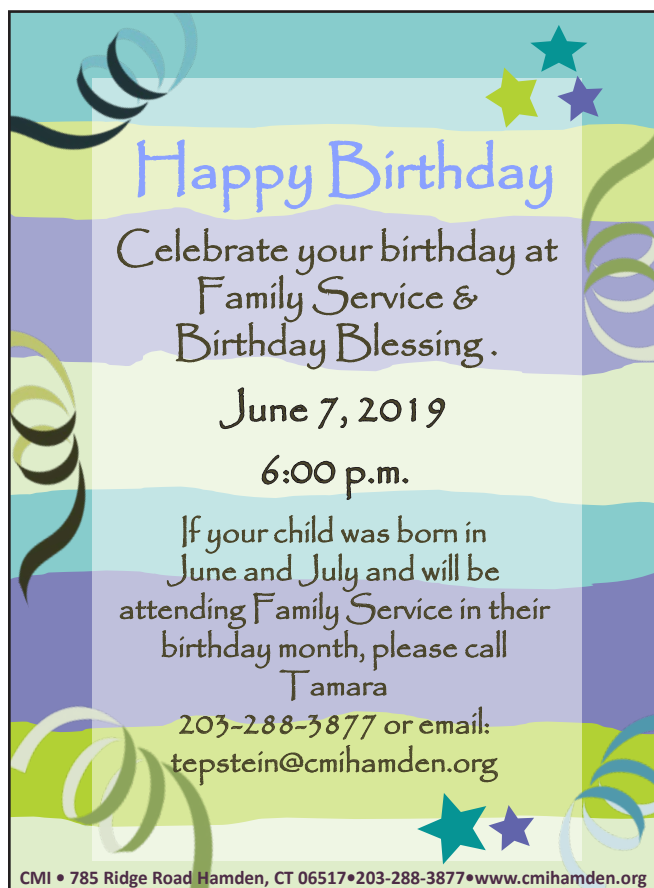
Thursday, May 16 / 9-10:30 a.m.

Or call 203.752.2610 to schedule a private tour.



HAMDEN HALL COUNTRY DAY SCHOOL

Educating students in PreSchool through Grade 12
1108 WHITNEY AVE. HAMDEN, CT. 203.752.2610
WWW.HAMDENHALL.ORG TRANSPORTATION AVAILABLE



Happy Birthday
 Celebrate your birthday at
 Family Service &
 Birthday Blessing.
June 7, 2019
6:00 p.m.
 If your child was born in
 June and July and will be
 attending Family Service in their
 birthday month, please call
 Tamara
 203-288-3877 or email:
 tepstein@cmihamden.org

CMI • 785 Ridge Road Hamden, CT 06517 • 203-288-3877 • www.cmihamden.org

CONGREGATION MISHKAN ISRAEL • DEDICATING ISRAEL • LED BY RABBI BRIAN IMMERMAN

CONGREGATION MISHKAN ISRAEL
 March 14-25, 2020

THE ISRAEL TRIP
MARCH 14-25, 2020
 FROM \$3,899 LAND ONLY

HIGHLIGHTS

- A journey of inspiration and education
- Experience Israel from ancient history to high-tech innovation
- Feel Tel Aviv's energy, Jerusalem's spirituality & the serenity of the North
- Savor the flavors of Israel: food and wine tours, cinema and art
- Meet a leader of the struggle for religious equality in Israel
- Go beyond the Green Line and behind the headlines
- From floating on the Dead Sea to geopolitics on the Golan Heights: Israel's diversity
- Encounters with Israel's Arab and refugee communities
- Israeli in style: outstanding tour educators and speakers, superb service

telling the story of Israel and the Jewish World.

da'at
 EDUCATIONAL APPROACHES
 REFORM JEWRY

ARZA WORLD
 CENTER FOR REFORM JUDAISM

JEWISH FAMILY TOURS

landmark
 CULTURAL EXPERIENCES

TOLL FREE 888-811-2812 | Search on arzaworld.com for more details

Tikkun Leil
SHAVUOT

Saturday, June 8
 Erev Shavuot Service
 • 6:00 PM

Sunday, June 9
 Shavuot Service with Yizkor
 • 10:30 AM

CMI • 785 Ridge Road Hamden, CT 06517 • 203-288-3877 • www.cmihamden.org

PRIDE SHABBAT

WHERE EVERYONE CAN FEEL PROUD

Friday, June 21
5:30 PM Oneg
6:00 PM Service

Members of the LGBTQ community at CMI are invited to participate. Please contact Dana Astmann at dana.astmann@gmail.com if you are interested in taking part in service.

CMI • 785 Ridge Road Hamden, CT 06517 • 203-288-3877 • www.cmihamden.org

UPCOMING EVENTS

The Congregation Mishkan Israel

785 Ridge Road
Hamden, CT 06517

Next Bulletin Deadline 6/1/19

**Time Value Data
Deliver No Later than June 1**

Non Profit Org
US POSTAGE
PAID
Permit #156
New Haven, CT

THE CONGREGATION MISHKAN ISRAEL BULLETIN

June 2019 Series 103 #9

Published monthly except July and August

THE CONGREGATION MISHKAN ISRAEL

785 Ridge Road Hamden CT 06517

Phone: (203) 288-3877 Fax: (203) 248-2148

<http://cmihamden.org>

Rabbi Brian P. Immerman x236

rabbi@cmihamden.org

Rabbi Emeritus Herbert N. Brockman, Ph.D. D.D. x243

cmirabbi@cmihamden.org

Cantor Arthur Giglio x244

cantorg@cmihamden.org

Merav Canaan, Temple Administrator x241

mcanaan@cmihamden.org

Michelle Goldstein, Religious School Director x237

mgoldstein@cmihamden.org

Alex Forte, Director of Youth Activities

mityor@cmihamden.org

Susan Witten Nason, Early Childhood Director x245

sperry@cmihamden.org

Gary Mitchell, Facilities Manager x231

gmitchell@cmihamden.org

Sarah B. Greenblatt, President

president@cmihamden.org

JUNE WORSHIP SERVICES & STUDY

SHABBAT BECHUKOTAI

Lev. 26:3-27:34

Friday, May 30

5:30 p.m. Early Oneg

6:00 p.m. Evening Service

Saturday, June 1

9:00 a.m. Torah Study

10:30 a.m. Morning Service
celebrating the Bar Mitzvah of
Joshua Wildstein

SHABBAT BAMIDBAR

Num. 1:1-4:20

Friday, June 7

5:30 p.m. Early Oneg

6:00 p.m. Family Service & Birthday Blessing

7:00 p.m. Annual Meeting &
Congregational Dinner

Saturday, June 8

9:00 a.m. Torah Study

10:30 a.m. Morning Service

SHAVUOT

Saturday, June 8

6:00 p.m. Erev Shavuot Service

Sunday, June 9

10:30 a.m. Shavuot Morning Service
with Yizkor

SHABBAT NASO

Num. 4:21-7:89

Friday, June 14

5:30 p.m. Early Oneg

6:00 p.m. Evening Service

Saturday, June 15

9:00 a.m. Torah Study

10:30 a.m. Morning Service

SHABBAT BEHALOTECHA

Num. 8:1-12:16

Friday, June 21

5:30 p.m. Early Oneg

6:00 p.m. Pride Shabbat Service

Saturday, June 22

9:00 a.m. Torah Study

10:30 a.m. Morning Service
celebrating the Bat Mitzvah of
Rachel Danishevsky

SHABBAT SHELACH

Num. 13:1-15:41

Friday, June 28

5:30 p.m. Early Oneg

6:00 p.m. Kleizmer Evening Service

Saturday, June 29

10:30 a.m. Morning Service
celebrating the Bar Mitzvah of
Sam Rosenberg

*Service times are subject to change. For the most up-to-date information and to hear sample tunes from services,
go to <http://cmihamden.org/worship>.*