



The Congregation Mishkan Israel

More than a place. We're a community.

JANUARY/FEBRUARY 2020

Series 105 Number 3

JANUARY & FEBRUARY 2021



**HAVE
A DREAM
MARTIN
LUTHER
KING JR.
1929
1968**

ANNUAL

**MARTIN LUTHER KING JR.
INTERFAITH REMOTE SERVICE**

GUEST SPEAKER

STATE REP. ROBYN PORTER

MUSICAL GUESTS

THE AFRO SEMITIC EXPERIENCE

FRIDAY, JANUARY 15•7:00 PM

THANK YOU

It is with immense gratitude that we thank the Brotherhood of Men and Women for their craftsmanship, time, and dedication to our community, for building and donating a beautiful outdoor menorah we can gather outside to celebrate Chanukah together.



In case of inclement weather, please check WTNH for announcements on delays and closings. As a rule, services are not cancelled.

When appropriate, we also will send a special e-newsletter and post updates on our website and facebook.

IS SOMEONE IN THE HOSPITAL?

Area hospitals are not permitted to notify us when a congregant has been admitted. If you know of a congregant who is in the hospital and would appreciate a call or visit, please contact Rabbi Immerman's office at (203) 288-3877 or rabbi@cmihamden.org.

In Memoriam

*Robert Abels
Lucille Enson
Gerald Feldman
George Lublin
Marjorie Rosenthal*

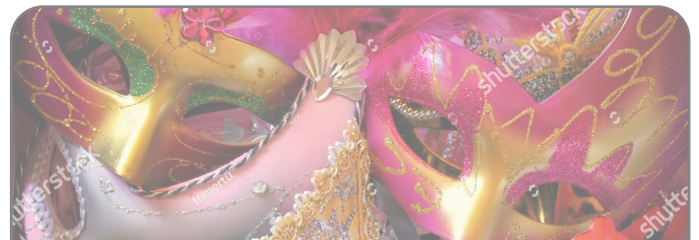
May their memory be for a blessing

In Sympathy

Julie Chevan on the passing of her father,
Robert Abels

Beverly Zakar on the passing of her daughter,
Beth Zakar

William Mack on the passing of his Aunt,
Gay Steinbach



Purim is Coming!

*Calling all wanna-be actors, singers,
and (excuse the expression) hams.*

We want you to be a part of this year's Purim Spiel. All ages and (in)experience levels welcome!

Be part of the fun at the Purim service on February 28th.

Stay tuned for an organizational meeting in January.

Questions? Email Julie Chevan
at julie.chevan@gmail.com



A MESSAGE FROM THE RABBI

Rabbi Brian P. Immerman

December 22nd is one of my favorite days of the year. December 22nd is a day of hope. This stands in contrast with

December 21st, which is always one of the hardest days of the year, for the daylight hours are the shortest and at times darkness seems overwhelming. Come December 22nd a few extra minutes of light are added to our day, and slowly we again begin our trek out of the darkness and into the light, from despair to hope.

2020 was a very hard year for us as individuals and as a community. There were many days in which we might not have felt light at all. I hope that even though we were apart, there were still moments of light in your lives. In 2020, as a community we learned how to engage as never before, and found ways to pray, learn and act together that will continue well into the future, even after we can safely resume our regular activities. As we begin a new secular year, we begin knowing that each day has the potential to be brighter than the next. Even when our actual light will start to dim halfway through the year, the promise of a vaccine has the potential to bring us back together in good time.

We are reminded on Chanukah to seek ways to add light to our lives. In a debate about how to light our menorahs, Shammai teaches that it is better to add one candle each night so as to increase in holiness, rather than to take light away each night as suggested by Hillel. (Talmud Shabbat 21b) From this we learn to seek sources of light to add hope to our lives, rather than to let it be removed.

As we continue this winter and spring together we can find hope and comfort when we are together as a community, on Friday nights, learning together during the week, celebrating our interfaith Dr. Martin Luther King service and so much more. If you are feeling more darkness than light that is OK, these are tough times. Please know that I and your community are here to be with you and I hope that you will reach out. Tomorrow, there will be more light than yesterday, and I pray that 2021 allows more light to shine in our homes, in our community, and in our hearts. See you all online soon!

RITUAL COMMITTEE NEWS

Abraham's Tent 2020

For over ten years, Abraham's Tent has brought together congregations of all religious denominations to provide housing and fellowship to the homeless during the cold winter months. A group of 10 homeless people are selected by Columbus House to participate. They spend a week being housed and fed by each congregation. CMI has participated since its inception. Due to the ongoing pandemic, Abraham's Tent is being re-imagined for 2020. Since we cannot physically house and feed our guests this year, we are being called to help them in other ways. Columbus House is seeking to move as many homeless people as possible into apartments. The rental cost is \$200 per person per week. Our goal is to raise at least \$2,000, which would pay the rent for the 10 homeless people who would have been staying with us. These are hard times. The homeless population is growing as people lose their jobs and their housing. We see them on street corners and avert our gaze. Here is a way to get the help they need directly to them through Columbus House.

**Please mail your donations by
January 16, 2021 to:**

Congregation Mishkan Israel
Attn: Abraham's Tent
785 Ridge Rd
Hamden, CT 06517

Write: "Abraham's Tent" in the "For" space on the bottom left your check. Or donate online at: cmihamden.org Click on "Donate", then click on "Make a Donation to CMI". Choose your amount and write "Abraham's Tent" in the "Payment Notes" window.

For more information please contact Tim Moran at: tim@timmoranwoodwinds.com

Thanks for your help!



CANTOR'S NOTES

Cantor Arthur Giglio

We are beginning to see some light at the end of a very dark tunnel that we have been patiently, or not so patiently, waiting to end. This has been a long, sad, and very difficult time for some members of our CMI family and others have managed to come through unscathed, but all of us have been profoundly affected. If it was not the pandemic, then it was stress of the elections. Through it all, our CMI Community has been the one grounding factor. We know that every week we will have Shabbat and that one day we will put our troubles aside and give ourselves over to the Eternal and the community.

Congregation Mishkan Israel has been blessed with 180 years of continuous existence and that is no simple feat. We live in a time where the past is treated as inconsequential. We live from news bit to news bit and yet, here we are, a testament to our will, tenacity, and longevity. As part of our 180th Anniversary, I was called upon to uncover the music of our forefathers and mothers and record a selection. What were the Jews chanting and singing in the mid-nineteenth century at Mishkan Israel? There are no recordings as audio recorders were yet to be invented. This was a time when many Jews and all manner of ethnicities were immigrating to the United States in search of a better life. What Jews brought with them were the melodies and traditions of the lands from whence they came. The Jews who settled in New Haven were German Jews and with them they brought the music of Salomon Sulzer, Lewis Lewandowski and Samuel Naumbourg. These three were inextricably linked together when you spoke of Western Europe Jewish music from the 19th and into the early 20th century. When looking through the music of these composers, what I found was an incredible wealth of choral music and not a lot of solo material written for the Cantor. I settled on Salomon Sulzer when I found a Hashkiveinu that was very indicative of the style from that time and was very likely heard on the bimah of Mishkan Israel during the 19th Century. Who is Salomon Sulzer you may

continued on page 7 ...



PRESIDENT'S MESSAGE

Michael Dimenstein

On January 28, 2021 we celebrate the festival of Tu B'Shevat. The name Tu B'Shevat refers to the date on the Hebrew calendar, the 15th day in the month of Shevat. The festival commemorates the traditional new year of the trees, according to the Talmud. Originally, the celebration marked the date on which trees in Israel reach sufficient maturity to harvest their fruit. It had been the custom to set aside as a religious offering one-tenth of the yield. The holiday typically begins after the rainy season in Israel ends, and the first buds on the almond trees appear, so it is a celebration of renewal.

Tu B'Shevat seders, or feasts, feature a variety of fruits and wines to symbolize the earth's complex order, and how it requires careful human stewardship to maintain its delicate balance and support life. Unlike other festivals on the Jewish calendar, Tu B'Shevat is not linked to an historic event or to commemorate the past. Instead, Tu B'Shevat is about our hope and intention of making the natural world more green and healthy, and to care for the planet, as the Torah commands us. We believe that the earth does not belong to us, but that we inhabit it by divine covenant. It is our sacred responsibility, as good stewards, to treat it with respect and preserve its beauty and bounty.

A landmark report from the United Nations Intergovernmental Panel on Climate Change released in 2018 illuminated what the scientific community has been warning for years—that climate change is real, its consequences are severe and the urgency to act is dire. Jewish environmental groups have been redoubling efforts to put into action our moral and sacred responsibility to practice Tikkun Olam, restoring wholeness to the broken world, in its most physical sense—addressing climate change and carbon emissions.

The ancient and modern festival Tu B'Shevat is an excellent time to affirm our connection with

continued on page 7...

MLK Interfaith Service

January 15, 2021
7:00 p.m.



State Representative Robyn Porter was first elected to the Connecticut House of Representatives in April 2014 following a special election. Since winning the 94th Assembly District seat, Porter has championed legislation that has provided

fair wages and work spaces for Connecticut's workers, reformed the state's criminal justice system and increased protections for domestic violence victims.

Porter has been a member of the both the Appropriations and Judiciary committees. She has authored and sponsored legislation that restores respect, dignity and fairer treatment for incarcerated women, prohibits a judge from setting bail for those charged with misdemeanors, outlaws the solitary confinement of minors, requires more data from prosecutors and strengthens transparency between law enforcement and the public.

At the beginning of her second full term in January 2017, Porter was named House chairwoman of the Labor and Public Employees Committee. Under her leadership, Connecticut workers have benefited from tremendous progress in the workplace. Representative Porter has:

- Championed legislation that strengthened gender pay equity laws, which had not been updated since 1963
- Led a 14-hour debate in the House to raise the minimum hourly wage to \$15 an hour by 2023
- Led a nearly 8-hour debate that establishes the Paid Family Medical Leave Insurance Program, the most generous paid leave program in the country to date

- Led the creation of the Council on the Collateral
- Expanded Workers' Compensation Benefits to firefighters and police officers diagnosed with Post Traumatic Stress Disorder (PTSD)

In her role as the co-chair of the Minority Teacher Recruitment Task Force, Porter has worked tirelessly on legislation to ensure that school boards employ at least 250 new minority teachers and administrators across Connecticut, and also helped to champion the passage of African- American and Latino studies in the public school curriculum.

Porter graduated from Gateway Community College with an Associate's Degree and later obtained her Bachelor's Degree in Criminal Justice from Charter Oak State College. She completed both programs with honors and was inducted into the Phi Theta Kappa International and the Alpha Sigma Lambda National Honor Societies.

She was employed by the Communication Workers of America from 2001 to 2017, is a longtime community activist who served as co-chairwoman of the Steering Committee for the Newhallville Community Resilience Team (NCRT). During her tenure at NCRT, the committee focused on increasing public safety by building social cohesion.

Porter is the proud parent of two adult children, Akeem and Aminah, and the spirited grandmother of Alana and Amir. She is a native New Yorker who has resided in New Haven, CT since the summer of 2000 and proudly calls it home.

SOCIAL ACTION NEWS

This month marks five years since CMI joined CONECT (Congregations Organized for a New Connecticut). So, what is CONECT, how does it work, and what does it mean to you as a CMI member?

A nonpartisan, interfaith, interracial organization of 29 churches, synagogues, mosques, temples, and civic organizations from New Haven and Fairfield counties, CONECT represents the voices of 25,000 people in Connecticut – a large number in a small state! Since its inception in 2011, CONECT members have worked together to take action on social and economic justice issues of common concern, making an impact on issues such as gun violence, health insurance rates, immigrant rights and police reform. CONECT offers an all-too-rare opportunity to work with members of other races and faiths on issues that matter to you!

Every congregation in CONECT has a core team; the CMI core team is another way for you to get involved. At CMI, CONECT team members have sponsored house meetings and organized educational sessions for members, such as the workshop on Yom Kippur, where we discussed Peggy McIntosh's *White Privilege: Unpacking the Invisible Knapsack*. (Please see the related article on a new series beginning in January.)

CONECT "issue teams" are put together based on the most important concerns of all of the member congregations. Members of any congregation can join an issue team; these teams research the issue, decide whether it's actionable and develop strategies and tactics for taking it on. Much of the work takes place at the legislative level. However, CONECT has been involved in community organizing for projects in Hamden, Norwalk and Bridgeport, for example.

CMI members are involved with these issue teams:

The healthcare/mental health team focuses on issues that disproportionately impact the health

of underserved communities, recognizing that inequities in health status are often the result of underlying and systemic issues such as racism, poverty, poor housing, and poor environmental quality. This fall the team engaged with New Haven's non-police community crisis response initiative planning, consulted monthly with other community advocates and state staff to identify strategies to reach vulnerable populations for COVID-19 testing/contact tracing, and continues to explore barriers to CT's reporting of data on race, ethnicity and geography for COVID.

The criminal justice reform team organized support for the important police accountability bill passed during the last legislative session, and will monitor any proposed changes to the law, as well as its implementation. The team is working hard to pass Clean Slate legislation, which, by automatically expunging certain crimes after a specified period of time, will allow thousands of people with criminal records to write new chapters in their lives after serving their time by allowing greater access to the jobs, housing and education they need to truly re-enter society. The bill was moving through the legislature when it was derailed by the pandemic; the team is focused on getting a bill passed during the session that begins in January. Finally, this team is focused on prison conditions, with a particular emphasis on COVID-19.

Along with CONECT's 29 other congregations, your CMI team worked to help get out the vote. The team provided information through the temple bulletin and was available for questions concerning registration for absentee ballots as well as voting by absentee ballot. Websites were listed for congregants interested in mailing post cards to get out the vote.

CMI's core team is happy to welcome new members. Please contact Karen Baar (karen.baar@gmail.com), Phil Kent (pkent@susmanduffy.com), or Beth Stenger (beth.stenger@comcast.net) for more information.

CANTOR'S NOTES *continued...*

ask? His text settings we still hear every week on Shabbat and throughout the year. Here is just a taste of a very influential Cantor from the 19th Century.

Salomon Sulzer was born March 30, 1804 in Hohenems, a little town in Vorarlberg, an Austrian province between Tyrol and Switzerland. He was raised in a family of devout Jews. As a child Sulzer trained at the Yeshiva in Emdingen (Switzerland). He continued musical studies in Karlsruhe (Baden) where Sulzer decided to become a cantor. Incredibly, at 14 years old he was elected cantor in his hometown, but for three more years he studied with well-known hazzanim of the time. In 1826 he took a leave of absence and went on a trip to Vienna and never returned. At 21 years old he was engaged as “Chief Cantor “of Vienna. Sulzer studied music composition and went on to be a close friend of Franz Schubert. In 1839 Sulzer published his first volume” Schir Tzion,” from which I took the Hashkiveinu that I am davening for CMI’s 180th Anniversary. His indelible mark on Reform Congregations continues to this very day. Quite remarkable!

Finally, please note the exciting events and holidays during January and February. We have the Martin Luther King Service on January 15th, followed by Tu B’shevat on January 28th (the birthday of the Trees, one of my favorite) leading up to Purim on February 26th. We are planning to have our first ever Zoomishe Spiel, so make sure you mark your calendars. Your winter will not be cold, damp and dark because we will be bringing the brilliant warmth and light of CMI into your homes.

PRESIDENT'S MESSAGE *continued...*

nature and all of its precious resources. A time of thankfulness for all we have taken from the earth, and for renewal of the natural world. It is a time for us to share responsibility, and as Jews, our sacred obligation, to care for God’s world—not only the trees, but also the sustainability of our environment, its water, wildlife and climate. If you would like to participate in discussions and activities both within our CMI community and with other Jewish, interfaith and secular groups committed to responsible environmental action, please contact the office and let us know.

NEW SERIES ON RACE & RACISM BEGINS IN JANUARY

Racial justice is a Jewish issue, rooted in our history and our beliefs as Jews. Beginning on Thursday, January 7, your CMI CONECT team will offer a six-part “CMI Series on Race & Racism: Deepening Our Understanding by Learning Together” on the first Thursday of the month. These sessions are an opportunity for individuals beginning to delve into these topics, as well as for those looking to further their understanding and engagement by joining in discussion with others. We’ll explore key issues through a brief overview presentation on the topic and a facilitated group discussion designed to offer participants a way to share their reflections. Resource materials will be assigned in advance of each session. Please join us! Pre-registration is strongly encouraged, and you can do that at cmihamden.org.

2020-2021 CHAI APPEAL

It is with immense gratitude that we acknowledge those families who as of this publication have responded to the menu of additional giving opportunities with a commitment above their standard dues and to the holiday appeal.

Our Pacesetters:

Michael Dimenstein & Hedda Rubenstein
Judith Hahn**

James Horwitz & Sandra Allison*

J. Lance Lichtor

Jerome & Roslyn Meyer**

Larry Schaefer & Lina Lawall

Jerome & Cecelia Serling

Mark & Judith Sklarz

*Double Chai

**Torah Circle

Additional Gifts:

Floyd & Letty Caplan, Jacob Crane, Bernice Giskin, Saul & Sonya Goldberg, Sarah Greenblatt, Benjamin & Maria Kahn, Dalton King & Michele Abrams, Al Klevorik & Susan Bender, Priscilla Jencks, Joel & Lucinda Kramer, Jeffrey Smith & Edith Rotkopf, Rabbi Howard Sommer & Dr. Linda Waldman, Rabbi Steve & Caryl Steinberg

JANUARY CALENDAR

January 2021

								1	2
								School & Office Closed 5:30 p.m. Tot Shabbat 6:00 p.m. Evening Service	9:00 a.m. Torah Study
3	No Religious School	4	5	6	7	8	9	6:00 p.m. Family Service	9:00 a.m. Torah Study
10	10:00 a.m. Religious School 10:00 a.m. 6th/7th Grade Confronting Antisemitism with the ADL	11	12	13	14	15	16	7:00 p.m. MLK Interfaith Service	9:00 a.m. Torah Study
17	No Religious School	18	19	20	21	22	23	6:00 p.m. Evening Service	9:00 a.m. Torah Study
24	10:00 a.m. Kol Shira Community Concert	25	26	27	28	29	30	6:00 p.m. Evening Service	9:00 a.m. Torah Study
31	10:00 a.m. Religious School 10:00 a.m. Tot Program: Tu B'Shevat								

February 2021

	1		2	3	4	5	6
			4:00 p.m. Hebrew School	10:00 a.m. Blood Drive		5:30 p.m. Tor Shabbat 6:00 p.m. Evening Service	9:00 a.m. Torah Study
7	8		9	10	11	12	13
10:00 a.m. Religious School 10:00 a.m. 2nd/3rd Grade Family Heritage Program			4:00 p.m. Hebrew School			6:00 p.m. Family Service	9:00 a.m. Torah Study
14	15		16	17	18	19	20
No Religious School			No Hebrew School	7:00 p.m. Executive Committee Meeting		6:00 p.m. Evening Service	9:00 a.m. Torah Study
21	22		23	24	25	26	27
10:00 a.m. Religious School			4:00 p.m. Hebrew School	7:00 p.m. Board Meeting		6:00 p.m. Evening Service 7:00 p.m. Megillah Reading	9:00 a.m. Torah Study
28							
10:00 a.m. Religious School 10:00 a.m. Purim Carnival							

JANUARY 1

Martha Abrams
 Jeffrey Abrams
 Robert Adams
 Simon Arovas *
 Jacob Bass
 Richard Lyon Belford
 Frances Belman
 Ann Berland
 Jeanette Blech
 Eve Bovilsky
 Mollie Osias Burness *
 Celia Byer
 Sarah Prince Cheskis
 Annette Cohen
 Joseph Cohen *
 Estelle Corper *
 Asna Finkelstein
 Diana Grafman
 Donald Henry Grinder *
 Adrian Hirschhorn
 Esther Hubelbank
 Marion Kauffman *
 Minna Kleeberg *
 Jack Krug
 Paul H. Lavietes *
 Zelman Evans Leshine
 Phyllis Palmieri Loewenbaum
 Sigmund Loewenbaum
 Sybella Ruth Maskel *
 Forester Newick
 Minnie Perlman
 Rebecca Polsky *
 Joseph Rattner
 Susan E. Rosen *
 Sidney C. Rosenberg *
 Max Rubenstein
 Miriam Hamerman Rudnick *
 Jeannette Schycon *
 Louis Eli Shapiro *
 Pauline Smolinsky
 Martha Solnit
 Kate Gootenberg Starin *
 Leo Stein *
 Marvin Stone
 Flora Switko
 Martin Stuart Weisbart *
 Meyer Werzburg *
 Mollie S. White *
 Annette G. Zelson *

JANUARY 8

Avraham ben Ya'akov Josef
 Averbuch
 Barnett Berman
 Sidney M. Brown *
 Adeline Buxbaum *
 Abraham Buxbaum *
 Jane C. Cohen
 Nedra Crane
 Steven M. Drozd
 Anna Eisenberg
 Babette B. Epstein *
 Albert Evans
 William H. Fenn *
 William Glass
 Myron L. Gordon
 Isabelle Lurier Hahn *
 Charles Hellwig
 Dr. Aaron R. Hertz *
 Robert K. Hertz *
 Pauline Hilcoff
 Abraham Hubelbank
 Albert Johnson Sr.
 James D. Kauffman *
 Eleanor Kaye
 Anna Kruger
 Millie Land
 Clara D. Levin *
 James Edward Levy *
 George S. Linde *
 Hilda Lipsher *
 Julius Moore
 Mary O'Brasky *
 Abraham Ominsky
 Rosaline Klein Passell *
 Irene Links Ray *
 Edward L. Ritch *
 Nathan G. Sachs *
 Dorothy Sands
 Sylvia Shustak
 Lloyd Silverman
 Nathan Siperstein
 Joseph Soffer
 Bella bat Moshe Sorochan
 Gladys Stenger
 Jacob Strauss *
 Joseph Tendler
 Edward Daniel Wallack *
 Bertha Weil *
 Herbert E. Yudkin
 Rachel Zanker

JANUARY 15

Irene C. Adams *
 Max Adler *
 Clifford Altschuler *
 Harold S. Appell *
 Miriam Astmann
 Dr. Arnold M. Baskin M.D. *
 Louis Bender
 Jeffrey Hirsch Cohen
 Harold Fishbone
 Nathan B. Frankenberger
 Pauline Glass
 Robert Gold
 Hattie H. Goldbaum *
 David M. Goodman *
 Sophie Stinow Goodman *
 Louis Greenberg
 Dorothy Katz Greenblatt
 Alfred E. Gross *
 Nathan H. Hamerman *
 Philip J. Harrison *
 Jean Lachman Howard
 Harry L. Kirsch *
 Regina Wendel Kleiner *
 Sylvia S. Korn *
 H. David Kushlan *
 Lillian L. Langrock *
 Mary Levine
 Charles Lipin
 Alan Massey
 Drew Ryan Merriam *
 Estelle Meyer
 Walter Bernard Moscovitz
 Mark Walter Neitlich
 Vivienne Nemerson
 Isidor E. Offenbach *
 Bennett S. Olins *
 Edna S. Opper *
 Theresa Lillian Phillips
 Harold Rosenberg
 Lillian M. Rubin
 Leah P. Sachs
 Hattie Schwartzman *
 Dr. Arnold H. Serow *
 Blanche T. Shafer *
 Miriam Shapiro
 Flora P. Silvernail
 Barbara Silverstone
 Sadie Kurtz Snider *
 Irving Steiglitz *
 Dr. Joseph Weiner
 Irving Weisbart *
 Ida Levine Yudkin

JANUARY 22

Nancy Ackerbaum *
 Siegmund Adler *
 Howard Beckerman
 Josephine Feinberg Bruno *
 Bessie Feldman Bruskin
 Annie Cohen
 Gladys E. Collins
 Rose Eisner *
 Irving Enson
 Lillian Gerrol Farber
 Michael Franford
 William Gitlitz *
 Yetta Gittler
 David W. Goldberg *
 Harry Goldblum
 Elaine Goldman
 George Goldman
 Elizabeth Goldsmith
 Sonia Grossman
 Lillian Hall
 Rose Hershenson
 Dorothy (Dolly) Hyman Hertz *
 William Horowitz
 Robert E. Hyman *
 Herbert Kabatznick *
 Lisa Shanbrom Keane
 Linda L. Klebanoff *
 Helen Bretzfelder Kleiner *
 Lillian (Bunni) Korman *
 Morris Korzenowitz
 Frank B. Levine *
 Edward H. Levy *
 Mary B. Linde *
 Ella S. Loeb *
 Hyman Lurie
 Clifford M Masheb *
 Daniel A. Mendoza *
 Deborah Mermelstein
 Benjamin Milles *
 Nathan Rattner
 Dr. Seymour Rosenblatt
 Arthur J. Rosenbluth *
 Sheldon Samuels *
 Stanley Scholsohn
 Samuel Schwartz *
 Jeanette Serling *
 Judith Siperstein
 Rose Stein *
 Cele Sweedler
 Ruth Lipton Swirsky
 David R. Tiven
 Arnold Unger *
 Carl Walman *
 Leonor L. Wexler

JANUARY 29

Robert Cyril Ackerberg
 S. Bennett Alderman *
 Howard M. Barach *
 Essie Barest
 Samuel Bell
 Bennett Blech
 Rabbi Harold Brockman
 Muriel Carberry
 Anna Elfman Cohen *
 Lori Cohen Varma *
 Rose Danzinger
 Hyman Dimenstein
 Dao Kim Phung Dinhvanminh *
 Irene Pines Finke
 Ellinor Jill Fox
 Herschel ben Velvel Gingis
 David Glass
 Eleanor Glazer
 Monroe S. Gordon
 Joseph Handleman *
 Mr. Seymour J. Hatkin
 Albert Hoffman *
 Nahman J. Jacobs
 Mervin Jacobson
 Jerome Jason
 Jennie Fishman Kaufman *
 Florence Knopp
 Joseph Ullman Labov
 Florence S. Levine *
 Jane Johnson Livingston *
 Sidney Margolis
 Mary Jane McDonald
 David Meyers *
 Edith Stein Meyers *
 Michael Milander *
 Dr. J. Haskell Milstone *
 Pauline Newman *
 Mildred Olgin
 Godel Ominsky
 Adrian Ostfeld *
 George Paley
 Lee Perlman
 Grace Zeidenberg Postman
 Evelyn Rosenblum
 Helen Hydeman Ross *
 Maxwell Rubenstein
 Jacob Rubin
 Hernan Saavedra
 A. Herbert Schwartz
 Harry Silver
 Samuel Simons
 Louis Sturtz
 Dr. Paul Teiger
 Murray Tuckell *
 Rebecca Tuckell
 Paul Turner
 Israel Willensky
 Steve Zielinski

FEBRUARY 5

Janice Ackerman
 Louis Adams
 Florence Opper Alderman *
 Valerie Allen
 Jennie Arovas *
 Milton B. Baker
 Jack I. Baser *
 Louis I. Berdon
 Henry Kleiner Cahn
 Lillian Chaprack
 Murray Cohen
 Charles Eisenberg
 Max Evans
 Thomas Flynn
 Pauline Freed *
 Herman Fribush
 Rose Gingold *
 Walter Fuld Gips
 Elaine Greenblatt Gladstein
 Flora Goldstein
 Helen Katz Goodkind
 Israel Babe Gordon
 Melvin Green
 Bessie Handleman *
 LeRoy Homer
 Rose Starin Hyman *
 Isadore Jacobson
 Harry Korman
 Hyman Land
 Sally Levine
 Martin Lowlicht *
 Barbara Fast Mezzoff
 Sarah Naden
 Caroline Oster
 David M. Popowich
 Isidor Premark
 William S. Richman *
 Harry Rittner
 Kenneth Rocklin
 Morris Roseman *
 M. Wallace Rubin *
 M. Wallace Rubin *
 Douglas Sandlaufer
 Anna Schreiber
 Louis Shure *
 Theresa Silver
 Ida Shoninger Sonnenberg *
 Delores Dubby Spivack
 Addie Stinow *
 Dr. Maurice J. Strauss *
 Elsie Stromfeld
 Lena Sturtz
 Jules Sturtz
 Marshall Richard Weiner
 Gertrude Baumgartl Wolf *

FEBRUARY 12

Stanley Back
 Sylvia Bernstein
 Hyman Bostin *
 Eva Brody
 Louise Buxbaum *
 Henrietta B. Cahn *
 Sidney Cohen
 Abraham Cohen
 Jacob Cooperman *
 Samuel Dryfus *
 Ben Eager
 Jack H. Evans
 Betty Fleischner *
 Sonya Gale
 Malka Gingis
 Walter Fuld Gips Jr.
 Israel Goldstein *
 Leo Jacob Gordon
 Dorothy Eleanor Greenhouse *
 Minna B. Hoffman *
 Zelda Hoffman
 Rose Jacobson
 Jacob Kassow
 Celia Kassow
 Benjamin B. Kauffman *
 Elsa Klahr
 Dr. Harry E Klebanoff *
 Julius Kraft
 Joanna Frances Landau
 Anna K. Lapides *
 Ruth Lapides *
 Robert Lebson
 Robert Maisel *
 Bertha Milander *
 Hyman Montlick *
 Yale Roy Nemerson
 Ellinor G. Newman
 Sam Nobleman
 Gerald Rozen
 Dr. Bernard Schneider
 Sam Seif
 Rose Fuchs Shernow *
 Pearl Shindler
 Abraham Skolnick
 Joseph Smolinsky
 Emma M. Sonnenberg *
 Alan Tiven
 Louis Weiss
 Isadore L. Wexler
 Sarah Zuckerman

FEBRUARY 19

Bessie Adler
 Inge Battige
 Edward S. Beck *
 Bertha Blech
 Jacob Blech
 Theodore Bovilsky
 David Caesar *
 Herman Robert Cherman *
 Sadie Cohen
 Ida R. Cohen *
 Ernest I. Frankenberger
 Anita Goldberg
 Jennie H. Gompertz *
 Emanuel H. Gratenstein *
 Norman Greenstein *
 Dennis Grove
 Tevye-Rasia Hanina
 Esther Hershman *
 Emily Heller Herz *
 Joyce Hirschhorn
 Ann Schpero Kaplan
 Mrs. Doris G Kaufman
 Milton Kirsch
 Ronni Knapp
 Roger C. Lehman
 Harry Levine *
 Mr. Herbert S. Levinson
 Veronica Loewenbaum
 Hinda Massey
 Zelma Moss
 Max Jordan Rand *
 Howard Roseman
 Cecelia Rosenberg *
 Gertrude Rosenthal
 Paul Stephen Rosenthal
 Irwin Sack
 Robert H. Saltzer *
 Norma Abeshouse Schaefer
 Herbert Schaffer
 Joan H. Schwarzkopf *
 Fanny Shoninger *
 Frances Shartenberg Shure *
 Alex Sterling
 Burton Tenner
 Augusta Thomas *
 Maurice Vener
 Hugo Weiss *
 Gerald Wyndorf
 Marisa Yudkin
 Dorothy Zundell

FEBRUARY 26

Harry Astmann
 Sylvia Bernstein
 Myron Blumenthal *
 Molly Braverman
 Cheryl Ann Campbell
 Sherwin Casher
 Hilda Delson
 Arthur Eder
 Harry Evans
 Clara Field
 Louis J. Fox
 Gerald Gale
 Louis Michael Gompertz *
 William Wolf Goodman
 Sophie Wilensky Green *
 Samuel Greenblatt
 Bertha Grove
 Elizabeth Harris
 Betty D. Heller *
 Bertha Herz *
 Gussie Hoffer Insler *
 Mildred Kirsch *
 Belle Krall
 Jeannette B. Kruger *
 Samuel Kryger
 Jennie Doroff Lavietes *
 Charlene Natovich Lavin
 Joseph E. Levy *
 Dr. Bernard Lipman
 Charles H. Marks *
 Morris Marqusee *
 Clara Menzel
 Samuel Olanik
 Mollie Opperman
 Max L. Osterweis *
 Jack Post *
 Myron Puklin *
 Marc David Rosenberg
 Jean Rothbaum
 Harry Seltzer
 Gershon Tziferman
 Hannah Stodel Weiner *
 Jacob Abraham Weiner *
 James Welsch
 Samuel Zakar
 Gertrude Zwickler

“...who donates much to charity becomes the richer for it...”

Zohar iii 110b

OCTOBER 1, 2020– DECEMBER 1, 2020

ENDOWMENT FUNDS:

(invested to generate annual income for specific purposes)

General Fund

Elizabeth Koskoff

Robert E. Goldberg Peace & Justice Fund

	In Memory of
Richard Ruth & James North	ROBERT RUTH
Bert & Martha Weisbart	IRVING WEISBART

Dr. Louis H. Nahum & Stella K. Nahum Music Fund

	In Memory of
Ruth Koizim	LUCIE DALE

Schaefer Family Fund

	In Honor of
Larry Schaefer & Lina Lawall	MICHAEL J. SCHAEFER
Larry Schaefer & Lina Lawall	SARAH D. SCHAEFER

TARGET AREAS: (meant for immediate use of funds)

General

Lydia Bornick

Sandra Cone

Michael & Irene Immerman

Priscilla Jencks

Jordan & Elise Miller

Jordan & Elise Miller

Chuck & Judy Naden

Chuck & Judy Naden

Stuart & Vivian Aronow

Susan Peck

Richard & Marcia Witten

Estelle Baltimore

Betsy Barnston

Bob & Carole Bellman

Irwin Braverman

In Appreciation of

High Holy Day Livestream availability

The opportunity to join the CMI community for the High Holy Day services

CANTOR GIGLIO
CANTOR GIGLIO, for his guidance as Lily became a Bat Mitzvah

RABBI IMMERMANN, for his guidance as Lily became a Bat Mitzvah

CANTOR GIGLIO
RABBI IMMERMANN

In Honor of

ELLEN GIGLIO
CECELIA BRIN becoming a Bat Mitzvah

JIM & CIS SERLING'S
new great grandson

In Memory of
FLORENCE BERKOWITZ
NELSON HAHN
MARK GREDINGER
JORDAN BRAVERMAN

Marvin & Dorothy Cohen

Rhoda Cohen

Michael Dimenstein &

Hedda Rubenstein

Len & Stephanie Farber

Len & Stephanie Farber

Jane Farrington

Jane Farrington

Burton & Kim Gillman

Sarah B. Greenblatt

Sarah B. Greenblatt

Jeff & Bess Horn

Jeff & Bess Horn

Jeff & Bess Horn

Priscilla Jencks

Paul Knapp

Ruth Koizim

Ruth Koizim

Jeremy Leven

Steven Lewis

Steven Lewis

Sondra & Philip Lublin

Daniel Moore &

Karen Orzack-Moore

Anita Perlman

Anne & Tony Pisanelli

Ruth Rosenthal

Ken & Suzanne Seltzer

Kirk & Ellen Shultz

Michael & Gale Silverberg

Mark & Judy Sklarz

Burton & Roslyn Tropp

Joan Wexler

Arleen & Martha Winters

Sydney & Arlene Zudekoff

MARK GREDINGER

SHIRLEY CHASIN

MARK GREDINGER

LAUREN FARBER

JEAN SOLOMON

MICHAEL SCHAEFER

SARAH SCHAEFER

MARK GREDINGER

BRUIN T. LIPMAN

I. ALBERT LIPMAN

LUCILLE ENSON

SARAH FEINSTEIN

ILSE HORN

GEORGE LUBLIN

JULIA LAFRANTZ

MAX GOLDFARB

JEAN SHERRES KAHN

ROBERTA DANZA

HERBERT LEWIS

VIVIAN LEWIS

FRANCES GORDON

BURNES E. MOORE, MD

ISADORE MANASEVIT

GEORGE LUBLIN

DAVID ROSENTHAL

BETTY SELTZER

MARK GREDINGER

BENJAMIN CARROLL

LEO SKLARZ

GEORGE LUBLIN

HARRY WEXLER

MARK GREDINGER

DAVID PAUL ZUDEKOFF

Adult Education/Seniors

Chevra Hands

In Memory of

GEORGE LUBLIN

Brotherhood of Men & Women

David & Julie Chevan

Michael Dimenstein &

Hedda Rubenstein

Bob & Tamara Epstein

Steve & Alisa Germaine

Bill & Nancy Horowitz

Priscilla Jencks

Karen Kimball

David & Susan Millen

In Memory of

ROBERT ABELS

ROBERT ABELS

ROBERT ABELS

ROBERT ABELS

ROBERT ABELS

ROBERT ABELS

ROBERT ABELS

ROBERT ABELS

Robert & Susan Nobleman	ROBERT ABELS
Jon & Leslie Redmond	ROBERT ABELS
Frederick Rosen	ROBERT ABELS
Mark & Judy Sklarz	ROBERT ABELS

Building

Chuck & Judy Naden	In Memory of CANTOR BERTRAM NADEN
--------------------	---

Cemetery

Peter & Saralee Black	In Memory of EVE BLACK
-----------------------	----------------------------------

Hunger Fund

Robert & Irma Bachman	In Memory of RHODA BERMAN
Robert & Irma Bachman	ANITA COHEN
Paul & Betty Becker	GEORGE LUBLIN
Rona Garbowit	DAVID EHRlich
Rona Garbowit	FAY EHRlich
Saul & Sonya Goldberg	BETH ZAKAR
Frederick Rosen	SUSAN E. ROSEN
Robert & Maxine Wallace	MARK GREDINGER

Library

Joel & Linda Cohen	In Appreciation of GEORGE LUBLIN
Joel & Linda Cohen	BETH ZAKAR
Evelyn Hatkin	GEORGE LUBLIN

Religious School Scholarship Fund

Victoria DaRe	In Honor LILY & SYDNEY becoming B'not Mitzvah
---------------	--

SPECIAL FUNDS:

Herbert N. Brockman Rabbinic Endowment Fund

Howard Lurie	In Memory of GEORGE LUBLIN
--------------	--------------------------------------

Rabbi Immerman's Discretionary Fund

Karen Baar	In Appreciation of RABBI BRIAN IMMERMANN
Diane & George Lublin	RABBI BRIAN IMMERMANN
Faye Silbermann	RABBI BRIAN IMMERMANN

Peter & Nancy Berdon	In Memory of ROBERT BERDON
David & Julie Chevan	ROBERT ABELS
Susan Krieger	RHODA CAHN
Cynthia Jedynek	SHIRLEY CHASIN
Joan Lipin & Family	BERNIE LIPIN
Linda Proscio	ROBERT GOLDNERS
Linda Proscio	MORTON PROSCIO
Ira & Karen Zeid	MARK GREDINGER



FEBRUARY WORSHIP SERVICES & STUDY

SHABBAT YITRO

Ex. 18:1 - 20:23

Friday, February 5

5:30 p.m. Tot Shabbat
6:00 p.m. Evening Service

Saturday, February 6

9:00 a.m. Torah Study

SHABBAT MISHPATIM

Ex. 21:1 - 24:18

Friday, February 12

6:00 p.m. Evening Family Service

Saturday, February 13

9:00 a.m. Torah Study

SHABBAT TERUMAH

Ex. 25:1 - 27:19

Friday, February 19

6:00 p.m. Evening Service

Saturday, February 20

9:00 a.m. Torah Study

SHABBAT TETZAVEH

Ex. 27:20 - 30:10

Friday, February 26

6:00 p.m. Evening Service
7:00 p.m. Virtual Megillah Reading

Saturday, February 27

9:00 a.m. Torah Study

CMI LIVESTREAMS SERVICES

We livestream services so that members and friends may enjoy services and the holidays. Regular services are available for viewing on your computer or mobile device. Simply go to <http://cmihamden.org/worship/livestream/>. Copies of past services are available under the Archived Videos tab. If you do take advantage of this service, please let us know of your experience.

The implementation of livestreaming capability was made possible in part by a grant from the Jewish Home Building Fund Corporation.



ROBERT E. SHURE, INC.
— FUNERAL HOME —

Dedicated to the Dignity and Respect of Tradition.

543 George Street, New Haven, CT 06511

Robert E. Shure
Founder

203-562-8244
shurefuneralhome.com

James M. Shure
President

MONUMENTS ERECTED IN ALL CEMETERIES

NOLAN'S
HAMDEN MONUMENT COMPANY
LICHTENSTEIN COMPANY

323 WASHINGTON AVE., HAMDEN, CT 06518

(203) 288-8486 • (203) 287-1593

CT Toll Free Only (800) 852-8865 • Fax (203) 287-1593

JOHN R. NOLAN
MICHAEL F. NOLAN

nolansmonuments@att.net

Benefit Congregation Mishkan Israel

Ask us about
establishing a fund, trust or annuity
to ensure CMI's future.

Jeffrey Hoos
Chair,
Board of Trustees



Lisa A. Stanger, Esq.
Director
203 387-2424 x382
lstanger@jewishnewhaven.org

We are a warm and vibrant senior community, infused
with Jewish values, where people live their best lives.



We lead with quiet competence,
serving one another with care, strength and humility.

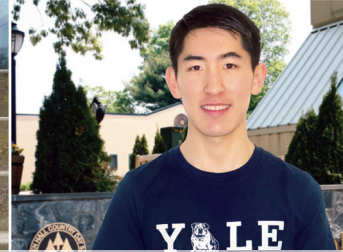
18 Tower Lane • New Haven, CT
203-772-1816 www.towerlane.org



THE HAMDEN HALL EXPERIENCE: CREATING ENDLESS OPPORTUNITIES FOR OUR STUDENTS



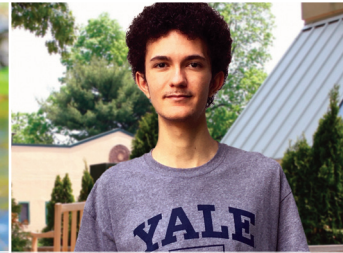
Orly Richter, Class of 2020
Brown University



Michael Lee, Class of 2020
Yale University



Jasmine Johnson, Class of 2020
UConn / Day of Pride Scholarship



Eduardo Pagliaro-Haque, Class of 2020
Yale University

VISITING OPPORTUNITIES:
Coffee and Campus Tours Sept. 17 / 9-10:30 a.m.
Oct. 15 / 9-10:30 a.m.
Open House Nov. 1 / 1-3 p.m.

Or call 203.752.2610 to schedule a private tour.



HAMDEN HALL COUNTRY DAY SCHOOL

Educating students in PreSchool through Grade 12
1108 WHITNEY AVE. HAMDEN, CT. 203.752.2610
WWW.HAMDENHALL.ORG TRANSPORTATION AVAILABLE

Weller Funeral Home

The oldest Jewish family funeral home serving the
Jewish community of greater New Haven with dignity since 1881

Danny Weller Klein

Fourth generation funeral director at Weller Funeral Home

424 Elm Street, New Haven, CT 06511

203-624-6912 www.wellerfuneralhome.com

The Congregation Mishkan Israel
785 Ridge Road
Hamden, CT 06517

Next Bulletin Deadline 1/1/21

Time Value Data
Deliver No Later than January 1

Non Profit Org
US POSTAGE
PAID
Permit #156
New Haven, CT

THE CONGREGATION MISHKAN ISRAEL BULLETIN

January/February 2021 Series 105, #3
THE CONGREGATION MISHKAN ISRAEL
785 Ridge Road, Hamden, CT 06517
Phone: (203) 288-3877 Fax: (203) 248-2148
<http://cmihamden.org>

Rabbi Brian P. Immerman x236

rabbi@cmihamden.org

Rabbi Emeritus Herbert N. Brockman, Ph.D. D.D. x243

cmirabbi@cmihamden.org

Cantor Arthur Giglio x244

cantorg@cmihamden.org

Merav Canaan, Temple Administrator x241

mcanaan@cmihamden.org

Michelle Goldstein, Religious School Director x237

mgoldstein@cmihamden.org

Alex Forte, Director of Youth Activities

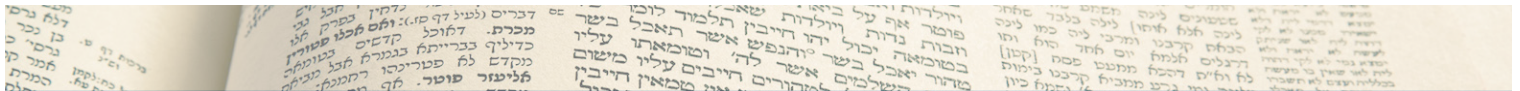
mityor@cmihamden.org

Susan Witten Nason, Early Childhood Director x245

sperry@cmihamden.org

Michael Dimenstein, President

president@cmihamden.org



JANUARY WORSHIP SERVICES & STUDY

SHABBAT VAYECHI

Gen. 47:28 - 50:26

Friday, January 1

5:30 p.m. Tot Shabbat

6:00 p.m. Evening Service

Saturday, January 2

9:00 a.m. Torah Study

SHABBAT SHEMOT

EX. 1:1 - 6:1

Friday, January 8

6:00 p.m. Evening Family Service

Saturday, January 9

9:00 a.m. Torah Study

SHABBAT VA'EIRA

Ex. 6:2 - 9:35

Friday, January 15

7:00 p.m. MLK Interfaith Service

Saturday, January 16

9:00 a.m. Torah Study

SHABBAT BO

Ex. 10:1 - 13:16

Friday, January 22

6:00 p.m. Evening Service

Saturday, January 23

9:00 a.m. Torah Study

SHABBAT BESHALACH

Ex. 13:17 - 17:16

Friday, January 29

6:00 p.m. Evening Service

Saturday, January 30

9:00 a.m. Torah Study

Service times are subject to change. For the most up-to-date information and to hear sample tunes from services, go to <http://cmihamden.org/worship>.