



The Congregation Mishkan Israel

More than a place. We're a community.

SEPTEMBER/OCTOBER 2020

Series 105 Number 1

SEPTEMBER/OCTOBER 2020



High Holy Day Special Edition

UPCOMING SERVICES & EVENTS

Shabbat Under the Stars • Friday, September 11

Selichot Community Service • Saturday, September 12

Memorial Service • Sunday, September 13

Erev Rosh Hashanah Service • Friday, September 18

Rosh Hashanah Services • Saturday, September 19

Rosh Hashanah Second Day Service • Sunday, September 20

Kol Nidre Services • Sunday, September 27

Yom Kippur Services • Monday, September 28

Sukkot Service • Friday, October 2

Simchat Torah Service • Friday, October 9 & Saturday, October 10

For a complete event listing go to CMI calendar on pages 13-14



MEMBERSHIP CORNER WELCOME TO NEW MEMBERS

The Congregation extends a warm welcome to new members: Linda Cornell, Diane Rosen, William & Elaine Ravich, and Megan Janoff.

SIMCHAS!

Mazel Tov to Cliff & True Wolff on the birth of their first grandchild Barris Edward Paschen-Wolff, born July 24, 2020.



SHULCLOUD NEWS

We hope you are starting to get familiar with our new member database, ShulCloud. For those of you who are still struggling please call the office 203-288-3877 and we will help get you set up.

CMI's new fiscal year started on 7/1/2020. Membership Commitment invoices can now be viewed in your ShulCloud account. To make a payment or donation: Please click on the gray donate square on the ShulCloud homepage to be directed to the payment/donation page. Your invoice will be visible and you can also choose your number of payments and you can write notes, if needed. The donation options are being updated, so check back for changes soon.



MAZEL TOV TO OUR NEWEST B'NAI MITZVAH



Alexa Leibowitz
June 6, 2020
Daughter of Richard & Yesenia Leibowitz



Benjamin Schroers
June 20, 2020
Son of Miriam & Jan Schroers



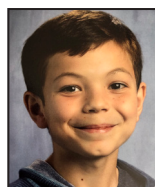
Shayna Bailis
June 27, 2020
Daughter of Robert & Julie Bailis



Avram Sirkis
July 18, 2020
Son of Jim & Jere Sirkis



Lucy McDermott
August 8, 2020
Daughter of Matthew & Emily McDermott



Benjamin Amerman
August 22, 2020
Son of Stephen Amerman & Leah Glaser



Sophie Harris
August 29, 2020
Daughter of Lawrence & Debra Harris



A MESSAGE FROM THE RABBI

Rabbi Brian P. Immerman

Throughout Abraham's life, our tradition teaches that God tested Abraham ten times in order to ensure that he was worthy of the covenant. Remarkably, Abraham always remained hopeful as he overcame the obstacles in his path. Even when God commands Abraham to sacrifice Isaac, as we will read on Rosh Hashanah morning, Abraham always assumes that the situation will resolve itself. God tells Isaac, "God will see to the sheep for His burnt offering, my son. (Genesis 22:8)" Abraham gave us the gift of monotheism, determination, and the gift of hope, the hope that if we always act with good intentions everything will be OK.

No matter how hopeful we are about the future, it might not be OK. We might lose our jobs, or family members, we might endure sickness, and relationships will build and fall. During the pandemic, the fears of these and more happening to us erode our ability to hope. Facing an uncertain and difficult future, we instead can look to our history as a guide. Our ancestors taught us that no matter how difficult the situation, we must always remain hopeful. Jews have persevered against war, famine, persecution and more during our 2000-year journey to the present. Maimonides, a great sage from the 12th century writes that we must believe in the perfection of our world, and even if it is delayed, we must still believe. During the best of times and during the darkest of times, Jews have found ways to be hopeful – which can help us persevere today.

As we prepare for online High Holy Days this year, we can still find hope in the melodies, liturgy and messages that have lifted Jews for 2000 years. We will celebrate our New Year and turn inward, searching our souls to learn how we will be our best selves in the year 5781. Nothing about the Holidays will be "virtual" – Cantor Giglio and I will be leading live in our sanctuary and during the services there will be moments to engage with each other and find comfort with our community.

We hope that everyone is able to join us. For more information see the High Holy Day guide in this bulletin.

Whether through the High Holy Days, important relationships, a special activity, or something else, I pray that this year we are all able to find hope and comfort in our sacred Mishkan Israel community. May we all feel God's blessing, and may we bless others through our words and actions as well. On behalf of Jenny, Maggie, Aiden, and I we wish you a Shanah Tova Umetukah U'b'tikvah. May we have a happy, sweet and hopeful new year.

ONEG SHABBAT & PULPIT FLOWERS

Celebrate the joy of the New Year with your CMI family by sponsoring pulpit flowers for the Rosh Hashanah or Yom Kippur services. Service will be live streamed from our CMI sanctuary and this is a way to continue to beautify our sacred space. Multiple sponsorships are accepted and can also be made in honor of a simcha or in memory of loved ones. Sponsorship is \$200 for each service and will be announced in the bulletin and in the e-news. For more information, contact Sarah at (203) 288-3877 or slegassey@cmihamden.org.

PROTOCOL FOR MI SHEBERACH (HEALING PRAYER) LIST

To add or delete a name to our Mi Sheberach (healing prayer) list that is read at services, please call Rabbi's office at (203) 288-3877. You must have permission from the individual to have their name read in public. (There is always the Hebrew option as well.) Names will remain on the list for one month, unless renewed or requested to be deleted.



CANTOR'S NOTES

Cantor Arthur Giglio

September is always the time when CMI springs back to life after a sleepy summer.

Well, this summer has been anything but sleepy and for that matter, neither has the year so far. As we well know, the COVID Pandemic has created a whole new world and reality that we never anticipated or even knew existed. We have been flying by the seat of our pants and this has been quite an adventure! Never in my wildest dreams would I have believed that my dining room would be turned into a mini recording studio and I would be leading services from home. That was a complete shock! In times of crisis, you either rise to the challenge or it consumes you and Rabbi Immerman and I had no other choice but to rise to the occasion. Rabbi Immerman jumped right in, took the bull by the horns and has led the charge. Yet, CMI is a big institution and absolutely none of this could have happened without our Executive Director, Merav Canaan working round the clock with our office staff, our tireless Religious School leader, Michelle Goldstein, our indomitable past President Sarah Greenblatt, and the fearless leader of our Pre-School Susan Nason. The combined force of their commitments literally saved CMI. We are so blessed to have such a committed team who has worked tirelessly to keep our community together.

If anything has come out of this pandemic it is the reality that we are all working two and three times harder than we were before. I went from playing simple songs on my guitar for my little buddies in the pre-school to accompanying myself on all the prayers during the Zoom service! That translates into hours of practicing! Rabbi Immerman put together a wonderful live Zoom Shabbat service and our community is still together every Shabbat. We are having Zoom B'nai Mitzvahs from the family's home and they are very moving and very well attended.

Continued on page 15...



PRESIDENT'S MESSAGE

Michael Dimenstein

It is an honor to serve as the new president of Congregation Mishkan Israel during its 180th year as Connecticut's first

synagogue. I continue, after over 30 years of membership, to be both impressed and humbled by the extraordinarily dedicated congregants, clergy, staff and lay leaders who make up our sacred community, and look forward to knowing and working with many of you over the coming year.

To say that these are unprecedented times is an understatement, and by now a cliché. However, it is important to acknowledge the challenges we all have been facing and how we have been discovering ways to navigate and make sense, if not something positive out of the experience. Through the technology of Zoom and other forms of virtual contact, many of us have been able to successfully conduct work, worship, social activity, and even medical care. Across all strata, we've lamented about some of our more mundane and vain concerns such as not having been to the hairdresser or being stuck in our humdrum, stay at home routines. We've been forced to face ourselves as other see us the moment that we click "video", and at once we expose our regretted imperfections.

There is a time-honored tradition during Shiva, the Jewish period of mourning, when the mirrors in the home of mourners are covered. It is believed that by not being able to view ourselves in the mirror, there is an opportunity to focus on our relationship with God, in whose image we are created. The custom is also intended to distract the bereaved from being concerned with their own appearance during the sad period. Fortunately, Shiva lasts only seven days, and in a month's time, the mourners are encouraged to transform a period of despair to a more hopeful time by returning to communal life.

Continued on page 15...



IMMEDIATE PAST PRESIDENT'S MESSAGE

Sarah Greenblatt

As Immediate Past President, I share special greetings for health and peace in 5781.

Being President of Congregation Mishkan Israel was the most rewarding and yet, complex “job” I’ve ever had. These past two years have brought unprecedented challenges – as well as multiple opportunities to work creatively with a new Rabbi, a Rabbi Emeritus, devoted Board and staff, a special congregation – and now a wonderful new President.

When I began in June 2018, I had the chance for a few short weeks to be President before Rabbi Brockman retired. I cherished those opportunities to support and be supported by Rabbi Brockman as we both prepared for our new roles. And then, I quickly shifted to welcome Rabbi Immerman and his family as we charted our joint efforts to form a sacred partnership, build new relationships with congregants and to understand how CMI systems work.

Over these two years, Board, staff and our diverse members worked to better understand who we are as a congregation in the 21st century. As a Board, we have asked for your trust as we’ve made, and will continue to make, hard decisions to balance our ethical and fiduciary Board responsibilities while building sustainability for our future.

And now as we maintain virtual connections among the members of our beloved congregation, we know that for 180 years CMI has grown and adapted l’dor v’dor – from generation to generation. Together as a congregation we will grow and adapt today as the world continues to change around us. With your support and engagement in our synagogue life, we will continue to sustain our vibrant community in new and exciting ways, and we will continue to be a leader in repairing the world. A special thank you for all you do for CMI!

JCARR NEWS

The pandemic has made life challenging for our 5 families but they have responded using all the skills they have accumulated along their journey. JCARR volunteers have continued to provide support physically, financially and emotionally.

Family 2 has moved into a new apartment and are awaiting the birth of their fourth child in the fall. Dad is waiting for the last test for his GED to be given and then he will be ready to continue his college courses and find more appropriate employment.

Family 3 is still not back in their apartment after having to move out when the apartment upstairs flooded. This has caused many inconveniences. Mom continues to offer a homemade Syrian cooked meal once a week including delivery. Dad will need further surgery on his ankle and hopes to be able to find work in the near future.

Family 5 continues to adjust to being in New Haven. Dad is looking for full-time work in a restaurant, warehouse, or other type of business. Mom is looking for part-time work in a grocery store or deli or cleaning. They will consider any opportunities. If you have ideas or leads, please let us know.

Many thanks to JCARR friends who donated in recent weeks. Thanks to your generosity, JCARR families are well-clothed, children are happily playing with new toys, and parents have been able to purchase much-needed items that food stamps won’t buy. Things are especially difficult now, when parents’ work has been diminished or eliminated due to COVID-19.

To make an online donation, go to: <https://jewishnewhaven.org/refugee-resettlement/give>. Or, send checks payable to The Jewish Federation, with JCARR in the memo line, to The Jewish Federation, 360 Amity Road, Woodbridge, 06525. Attention: Amy Holtz. We greatly appreciate your generous donations!

For more information please contact Sue Millen (smillen179@sbcglobal.net) or Lina Lawall (lalawall250@gmail.com)



NURSERY SCHOOL NEWS

Susan Witten Nason
Early Childhood Director

We are busy preparing for Rosh Hashanah and hope that this year brings us health and happiness! It has been a whirlwind few months and we are happy to be back with our friends and coworkers. We are all diligently working towards keeping everyone safe and healthy, as we adapt to our new 'normal' standards.

It is good to know we are part of a bigger community, and that we are in this together!

שנה טובה ומתוקה May you have a good and sweet New Year.

We work very hard to teach our children about Tikun Olam תיקון עולם through our ongoing Tzedakah projects and we appreciate your generous contributions.

We will be closed September 5th in honor of Labor Day.

MINS School & Daycare

MINS is unparalleled in flexibility and providing a loving, multi-cultural experience with a Jewish curriculum. Reflecting the CMI mission, the School incorporates social justice (tzedakah) projects. The school is open to the community. Reserve your spot today.

Currently accepting 2 year olds & 4-6 Pre K.

For more information, contact Director Susan at (203) 288-2375 or sperry@cmihamden.org.

CMI • 785 Ridge Road Hamden, CT 06517 • 203-288-3877 • www.cmihamden.org

SEPTEMBER AND OCTOBER B'NAI MITZVAH



Benjamin Kruger
September 5, 2020
Son of Nathan Kruger & Avery Grauer



Mollee Merritt
September 12, 2020
Daughter of Robert & Robyn Merritt



Isabelle Brown
October 10, 2020
Daughter of Matt Brown & Rachel Kline Brown



Cecelia Brin
October 17, 2020
Daughter of Dr. Leon & Amy Brin

COLLEGE OUTREACH PROGRAM



We want to keep the college-age children of our members connected to synagogue life, even when they're away at school.

Interested college students and high school seniors getting ready for college life can sign up to be part of our new College Outreach Program. Parents can also sign up their kids. Send your name, phone, mailing address, e-mail, college attending and years to Sarah at slegassey@cmihamden.org.

We also welcome adults who would like to help with the Program. If you're interested in helping to put together care packages and other activities, send your contact information to Sarah.

2019-2020 CHAI APPEAL

It is with immense gratitude that we acknowledge those families who as of this publication have responded to the menu of additional giving opportunities with a commitment above their standard dues and to the holiday appeal.

Our Pacesetters:

Michael Dimenstein & Hedda Rubenstein
Judith Hahn**

Jerome & Roslyn Meyer**

Larry Schaefer & Lina Lawall

*Double Chai

**Torah Circle

Additional Gifts:

Floyd & Letty Caplan, Bernice Giskin, Al Klevorik & Susan Bender, Joel & Lucinda Kramer,
J. Lance Lichtor

Night of Music – April 25, 2020

We extend a special thank you to those who donated in appreciation of our special virtual concert.

Jonathan & Stephanie Alderman, Michael Allen & Eun-Mi Shim, Karen Baar, Phyllis Bausher, Dana Brozinsky & John Keegan, David & Julie Chevan, Robert Cole, Tracy & John Dowgeiwicz, Bob & Tamara Epstein, Sheila Greenstein & Ed Biondi, Richard & Nedra Gusenburg, Robert Homer & Susan Fishbein, Michael & Irene Immerman, Ben & Maria Kahn, Dalton King & Michele Abrams, Jane Maine, Daniel Moore & Karen Orzack-Moore, Scott Gaul & Madeline Ravich, Larry Schaefer & Lina Lawall, Shirley Scholder, The Slattery Family, Rabbi Steve & Caryl Steinberg, Dr. Joseph & Myra Zelson

CMI LIVESTREAMS SERVICES

We livestream services so that members and friends may enjoy services and the holidays. Regular services are available for viewing on your computer or mobile device. Simply go to <http://cmihamden.org/worship/livestream/>. Copies of past services are available under the Archived Videos tab. If you do take advantage of this service, please let us know of your experience.

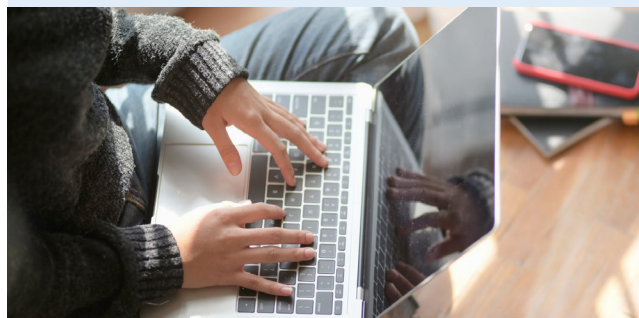
The implementation of livestreaming capability was made possible in part by a grant from the Jewish Home Building Fund Corporation.

CONNECT WITH CMI ONLINE

Keep up-to-date with all CMI events. Check our website regularly at cmihamden.org. You will find announcements, upcoming events, calendar, worship service times, and contact information. New members can join the congregation, and everyone can register for religious school and nursery school, pay your bills and make contributions.

We have several e-newsletters to keep our congregational family informed of upcoming events, recent passings, and school events. If you're not currently receiving our e-newsletters, contact Sarah at slegassey@cmihamden.org so that you can get on the distribution list.

CMI is on Facebook. Click the icon on our website or go to <http://www.facebook.com/cmihamden>. You'll want to "like" us.





SHANAH TOVA – HAPPY NEW YEAR! YOUR GUIDE TO HIGH HOLY DAYS AT CMI

Judaism’s gift to the world is hope – a vision and unwavering commitment to create a perfect world enveloped in *shalom*, in peace and wholeness. For over 2000 years, Jews have overcome remarkable challenges because we always remain optimistic. This year is no different - while the High Holy Days will be online, and even though we face many challenges, when we gather together as a community, we can find optimism in the traditions that have supported our people generation after generation.

As the prophet Isaiah pleads “Comfort, comfort my people. (40:1)” During the High Holy Days we will find comfort in the glowing faces of our community, in the familiar melodies chanted by Cantor Giglio, and in the words that have brought hope to Jews for millennia. The sound of the shofar will still resonate within us and fill us with hope.

You can access all of our services this year online at cmihamden.org/hhd. While we will not be physically present, our presence will still be tangible. Our services will be interactive, offering elective opportunities to reflect on the liturgy and theme of the holidays with other community members. Alternatively, you can join us for a viewing-only experience on our livestream with no password required: cmihamden.org/livestream.

The year 5781 is going to be a year of hope – a *Shnat Tikvah*. On the High Holy Days, as a sacred community, we will re-commit to improving ourselves and our world, as we have done every other Rosh Hashanah and Yom Kippur. Thank you for being a vital part of our community and know that your presence and participation, even virtually, creates a warm and joyous experience for all.

L’shanah Tova u’metukah v’b’tikvah,
Wishing you a happy, sweet, and hopeful new year,

Rabbi Brian P. Immerman
Cantor Arthur Giglio
Michael Dimenstein, President



HIGH HOLY DAY SCHEDULE*

Selichot – Community Service
 Saturday, September 12, 7:00 p.m: Program and Spiritual Worship
Memorial Service
 Sunday, September 13 2:00 p.m: at CMI Cemetery , 701 Whalley Ave, New Haven, CT 06515

<p style="text-align: center;">ROSH HASHANAH</p> <p>Friday, September 18 8:00 p.m. Erev Rosh Hashanah</p> <p>Saturday, September 19 9:00 a.m. Tot Program 10:00 a.m. Morning Service 2:00 p.m. Family Service</p> <p>Sunday, September 20 10:00 a.m. 2nd Day Tashlich</p>	<p style="text-align: center;">YOM KIPPUR</p> <p>Sunday, September 27 8:00 p.m. Kol Nidre Service</p> <p>Monday, September 28 9:00 a.m. Tot Program 10:00 a.m. Morning Service 12:30 p.m. Reflection Service 2:00 p.m. Adult Study with Professor Shelly Kagan 2:00 p.m. Family Service 3:00 p.m. Afternoon Service 4:45 p.m. Yizkor (Memorial) & Neilah (Concluding) Services</p>
---	---

<p style="text-align: center;">SUKKOT</p> <p>Friday, October 2 6:00 p.m. Erev Sukkot Service</p> <p>Saturday, October 3 10:30 a.m. Sukkot Morning Service</p>	<p style="text-align: center;">SIMCHAT TORAH</p> <p>Friday, October 9 6:00 p.m. Simchat Torah Service</p> <p>Saturday, October 10 10:30 a.m. Simchat Torah Morning Service</p>
--	---

*All Services are offered on zoom or livestream except Tashlich and Memorial Service. See how to access on page 11

WHAT TO EXPECT

TRADITIONAL SERVICES

Congregation Mishkan Israel's traditional High Holy Day service. Experience the power and spirituality of the holidays with Rabbi Immerman and Cantor Gigilio.

FAMILY SERVICES

A worship opportunity for the entire family on the day of each holiday with the clergy.

TOT EXPERIENCE

On both Rosh Hashanah and Yom Kippur young families and everyone can join us at 9:00 a.m. for some singing with our talented song-leader Miss Elise Miller and a story with Michelle Goldstein.

SELICHOT

Saturday, September 12 at 7:00 p.m.

We prepare for the High Holy Day Season of personal reflection on the Saturday night before Rosh Hashanah. CMI partners with local reform synagogues for spiritual worship and learning.

SECOND DAY ROSH HASHANAH TASHLICH

Sunday, September 20 at 10:00 a.m. Join us on the second day of Rosh Hashanah location TBD. We will have a brief service followed by the opportunity to symbolically cast away our sins by throwing pieces of bread into the lake and prepare ourselves for Yom Kippur. Bring your own bread. We will practice distancing and masks are required.

SHABBAT T'SHUVA

Friday, September 25 at 6:00 p.m. The Shabbat between Rosh Hashanah and Yom Kippur is called the "Shabbat of returning". This acknowledges the fact that we are in a time of *t'shuva*—returning to the be the very best versions of ourselves.

KOL NIDRE

The name of the prayer which begins Yom Kippur and the name by which we often refer to the Yom Kippur evening service. Sunday, September 27 at 8:00 p.m.

YOM KIPPUR STUDY SESSION

Professor Shelly Kagan will lead a group text study at 2:00 p.m.

YOM KIPPUR REFLECTION SERVICE

The reflection service provides an opportunity for us to reflect on the past, present, and future with the aid of original and thoughtfully selected writings and music by members of our congregation. Community participation is essential – to sign up please contact Stan Friedman at stan24@hotmail.com

YIZKOR MEMORIAL SERVICE

During Yizkor, we remember our loved ones who are no longer with us. We will read the names of our congregants who have passed away since the last High Holy Days. If you wish the names of others who have passed away since September 2019 to be read out loud at this Memorial Service, please call or send the names to Sarah Legassey by September 8.

YOM KIPPUR AFTERNOON: MINCHA, YIZKOR, NEILAH

We hope that everyone will join us for Yom Kippur afternoon for worship filled with t'shuva, music, hope, the story of Jonah, followed by the Yizkor Service and Concluding with Neilah and Havdalah.

HAVDALAH

Log in for the last 10 minutes of the Yom Kippur worship to hear the final blow of the shofar, Havdalah, and break the fast with our sacred community.

CMI MEMORIAL BOOK

Each year our community creates a book remembering all of those who are with us in spirit during the days of Awe. Visit cmihamden.org/hhd for the dedication form or call the CMI office. This year we will have the book online as well as the option to place an order for the hard copy you will need to pick it up at the synagogue on Friday, September 25 from 8:30 a.m. – 4:00 p.m.

Above services are all offered via zoom or livestream

HOW TO ACCESS SERVICES AND PARTICIPATE

ACCESS SERVICES

You can find the links for all High Holy Day services on our website, cmihamden.org where there will be a clear link. Members will be able to access the HHD services in three ways, using Zoom, via the Livestream, or Phone

Zoom:

Using Zoom, CMI members can participate in our interactive services. We will use the breakout rooms feature to connect our community for conversation and support during the Days of Awe. For security reasons **Zoom services require the password:** Due to increased security concerns during the High Holy Days 5781 we are only giving the password to CMI members. To help us with security, please do not share this password; friends and family can join us via the livestream (see below). Additionally, Zoom limits the number of logins and so we ask that each family uses only one device to participate.

Livestream:

Using our livestream, at cmihamden.org/livestream, anyone can watch our services with no password required. Simply head to our website and click play. The livestream is view only, no participation in breakout rooms, and there is no password needed.

Phone:

Members can also access Zoom via your telephone. Dial _____ and when prompted enter the meeting id: _____, and then when prompted enter the passcode: _____.

The best way to ensure that you can join us for the High Holy Days is to join us for a Shabbat Service and test your preferred method of connecting. We also suggest that you try and login 15 minutes prior to the start of services so you do not miss the beginning. If you have any questions, there will be staff in the office to help – call 203-288-3877.

VISUAL T'FILAH AND PRAYER BOOKS



In order to maximize participation, the prayers will all be on the screen, like Shabbat services. We will be using our prayer book Mishkan HaNefesh.

We know that some might want to follow along in the actual prayer book, so each slide will have the corresponding page number. If you wish to borrow a book from CMI, please contact the office.

We can lend books during two blocks of time for those who reserve in advance, with masks and gloves. Thursday, September 10 at 3:00 p.m. and Friday, September 11 at 9:00 a.m.

TZEDAKAH

As is our custom, CMI will be sponsoring its annual drive to address food security in our local community. We do this in the hope of helping those whose fast will not end at sundown. In view of current Covid-19 restrictions, rather than collecting donations of food, CMI is asking you to consider donating online to our Hunger Fund at cmihamden.org in support of the Jewish Family Service Food Pantry. Your donations will be used to purchase grocery gift cards for Food Pantry clients. You may also contribute by making a personal check payable to CMI and directing your gift to the Hunger Fund.

SAVE the DATE

**Join Us for a Special Cantor's Concert and Fundraiser
to Celebrate CMI at 180 years!**

WHEN: *Saturday, November 14, 2020 – 7:00-8:30 pm*

WHERE: *In Your Living Room Virtually via Zoom*

FEATURING: *Mark Berman, CMI's Cantor G and Special Friends*



Stay tuned!

September 2020

		1	2	3	4	5
6	7	8	9	10	11	12
13	14	15	16	17	18	19
20	21	22	23	24	25	26
27	28	29	30			

CANTOR'S NOTES *continued...*

We have made it through the summer and now we have the High Holy Days.

High Holy Days have created an incredible challenge for us just because of the sheer size of it all and translating it to work on Zoom because we still cannot be together. Just the thought of us all not being in the magnificent Sanctuary for High Holy Days is extremely distressing and for me and unimaginable! Rabbi Immerman and I are planning to bring you the High Holy Day experience, just differently. Due to the COVID virus we cannot have a Choir this year and there is so much choral music in these services that will be terribly missed. Fortunately, your Cantor can still daven for you the prayers you know and love and the sweet refrains that go with them. Just think of this year as a wonderful new experience!

I look forward to seeing everyone in my CMI family at services, especially during the "Naim Noraim" the Days of Awe! Do not forget that the Community Selichot service will be Saturday Evening, September 12 and please join us as we reflect on the past year and the changes we wish to make in the upcoming one. Read the CMI e-news for details!

It is never too soon to SAVE THE DATE as CMI turns 180 years young!!

We celebrate this momentous event with a Special Cantor's Concert/Fundraiser on Saturday, November 14, 2020 from 7-8:30 PM. It will be broadcast to your living room live and virtually via Zoom and featuring our own Mark Berman, special friends, and myself. Be there!!

PRESIDENT'S MESSAGE

continued...

Our period of Covid-19 seclusion has far exceeded perhaps any of our expectations. During this special milestone year, CMI finds itself challenged by the effects of this global pandemic. While we remain unwavering in our commitment to engage with our community, attract new members and retain our current congregants, we must explore and identify alternative and innovative strategies.

We must secure our financial future as we manage a projected deficit resulting from a period of mandated closure of the Nursery School, postponed life cycle events, lost rental income as well as postponed fundraising events. Now, more than ever, we need you, our community, to respond with your support.

As we look forward to the New Year 5781, we are instructed to perform the mitzvah of Teshuvah or "return", the Jewish practice of turning inward and reflecting on our human transgressions so that we don't repeat them in the future. Teshuvah offers us an opportunity to confront our misdeeds and create a new path forward.

Maimonides, the revered 12th Century Jewish philosopher, physician and author of religious law taught that Teshuvah is a bridge between the Torah and humankind, making all of us worthy of self-transformation and a future of wholeness. While it starts with self-examination and viewing ourselves in the front and rear-view mirrors, there is unlimited opportunity for us to make our world look much better.

At CMI we welcome you to share with us this High Holy Day period of self-reflection. There are so many ways you can join us in performing mitzvot. We thank all who have returned their membership commitment payments and made other charitable gifts. If you have the capacity to give more than your membership commitment, please consider doing so. If you are able to volunteer your time and talents, please contact the CMI office at (203) 288-3877 regarding opportunities to assist with our calendar of activities and events.

For those who are facing financial hardship at this time, please know that all are welcome at CMI, and we will be here to make whatever arrangements are necessary to allow you to remain part of our congregation. Remember, our building may be closed for most purposes, but our community couldn't be more open and welcoming,

L'Shanah Tova!

SEPTEMBER 4

Sylvia Insler Baser *
 Irving Block *
 Lewis Bush
 Edward Campbell
 Johanna Cleiff
 Rose Cohen
 Sylvia R. Cohen
 Harry Drabkin
 Frances L. Feinn *
 Edith Friend
 Benjamin L. Goodman *
 Evelyn Shukovsky Gordon
 Lena N. Henchel *
 Henry Herz *
 Joseph Hozer
 Caryl Johnson *
 Jacob Johnson *
 Iris Kaplan
 Fay Kauffman *
 Kenneth J. Koufman *
 Charles Kushlan *
 Sarah Manasevit
 Stella Mendelsohn *
 Marcia Mersey *
 William S. Perloth *
 Fay Drabkin Peters
 Herbert S. Sacks MD *
 Alfred Simon *
 Marjorie Smith
 Beatrice Wallman *
 Irmgard Steinhardt Weiss *
 Henio Zarkover
 Seymour Zellman

SEPTEMBER 11

Samuel Allen
 Benjamin Arrick *
 Risa Gordon Becker
 George Bostin *
 Joseph Cahn *
 Evelyn Carmody
 Joseph Chetrick *
 Bertha Drabkin
 Bertha Drabkin
 Richard A. Fuchs *
 Beatrice Gesmonde *
 Frank M. Goldsmith
 Mitchell Gompertz *
 Lee Green
 Steffa Harrison *
 Hyman Jacobs *
 Rosaline (Rosh) Kagan
 Frances Kaplan
 Dr. Leopold (Levi) Kleeberg *
 Eugene H. Kone *
 Sylvia B. Koufman *
 Seymour Lemberg
 Walter Lesnick
 Phillip Mackler *
 Frances Manasevit
 Henry Mersey
 Joseph D. Muhlfelder *
 Mark Resnick
 Molly Rosenthal *
 Irving Saltz *
 Selma Kahn Schoenberger *
 Harold Lewis Schwartz *
 Henry Schwarzschild *
 Meyer Silverman
 Annie P. Skolnick
 Richard M. Thalheimer *
 Nathan Ticotsky
 Sarah B. Trotsky *
 June Waldman
 Joan Lapides Wingate *
 Cantor Arthur Yolkoff *
 Yetta Zimmer

SEPTEMBER 18

Esther Myers Adler *
 Ethel Bleich
 Arnold Brown
 Stanley Buetens
 Samuel Cohen *
 Mary Feierstein *
 Barry L. Goodman *
 Mrs. Marilyn Grossman
 Charles Horn
 William N. Kauffman *
 Codman Kruger *
 Robert Landowne
 Howard Levenson
 Lois Postol Levin
 Murray Allen Levin *
 Ida L. Levy *
 Rose Levy
 Charles Lichtenstein *
 Herbert Lipshez
 Henry Meyers Machol Jr. *
 Dr. Edward S. Mack
 Fanny Lurier Morris *
 Nathan A. Myers *
 Saul Pollack
 Dr. Arthur A. Rubin *
 Rachel Golden Rudnick *
 Moses S. Sagal *
 Ida June Sauerteig
 Rosalind Schaefer Savitsky
 Lesley Siegel
 Lillian Silva
 Irving Spatz
 Lillian G. Tessler *
 Julius L. Wareck *
 Andrea Werner

SEPTEMBER 25

Sandra Adler
 Marie Lhevine Aries
 Dr Boris M. Astrachan *
 Bette S. Bender *
 Isaac Breslav *
 Alfreda M. Button *
 Jack Abraham Cohen
 Robert C. Cooper
 Gladys Field
 Lawrence P. Gennett
 Rochelle Sosne Glaser
 Evelyn Greenblatt
 Helen Starin Harrison *
 Ann Hinds
 Alice Kaminsky
 Samantha Karpel
 Pearl Kasper
 Nathan I. Kleiner *
 Robert T. Levine *
 Gertrude Gerson Marks *
 Frances Evans Merberg
 Laura Beth Meyers *
 Florence E. Olinsky
 Shirley Racusin
 Ethel Rosenblatt
 Sophye L. Rosenthal *
 Morris Rosenthal *
 Rella Rubenstein
 Pauline Schreiber
 Dr. Louis M. Serling *
 Theodore Shaker
 Richard Lawrence Shelling *
 Leo Sklarz Sr.
 Olga G. Unger *
 William Weinstein *
 Ethel Weisbart *
 Evelyn G. Zalon *

In Memoriam

Norman Rashba

Louis Scheps

May their memory be for a blessing

OCTOBER 2

Dr. Robert S. Adams *
 Louis Aronson
 Rosalind Berman
 Eva Sheftel Bershtein *
 Albert L. Bolton
 Walter Terry Breslav Jr.
 Sonia Brown *
 Arthur Caplan
 Bernard Chertow *
 Seymour Aaron Cohen *
 Samuel Crane
 Gary Eager
 James Freedman
 Frederick J. Geisinger *
 Nancy Goldenberg
 Moss Gompertz *
 Betty Z. Greenberg *
 Caroline Schoenberger Hahn
 Joan Joffe Hall
 Gerald S. Heller *
 Lena Heller
 Barbara R. Hershenson *
 Earle E. Jacobs Jr. *
 Benny Kerber
 Sidney Kleper
 Peter Ellis Mendelsohn *
 Richard Louis Moore
 Elaine Paul
 Harold Perlin *
 Julius L. Popowich *
 Ruth Samuels *
 Frank J. Schaefer
 Sol S. Scholder *
 Louis Shafer *
 Henry M. Shartenberg *
 Benjamin Sklaver
 Sydney L. Solomon *
 Charlotte Styles *
 Nathan Sussman
 Herman Vener
 Irene Warnk
 Israel Wilensky
 Marc Zimmerman

OCTOBER 9

Clara Shafer Adams *
 Harry Bromberg *
 Richard Byer
 Anthony R. Cannon *
 Meyer Eisenberg
 William Eisner *
 Ronald Ferguson *
 Dorothy Freedman
 Samuel Gingold *
 Aaron Goldberg *
 Leila Gompertz
 Milton Greenberg
 Arthur Jerome Grove
 Edith Sylvia Pinto Hallo *
 Jack Kaplan
 Mabel R. Klebanoff *
 Jerome Saul Klein
 Ruth Kliger *
 Merwin M. Krevit *
 Barbara Kupferberg *
 Larry Laycob
 Lee Leventhal
 Alice MacDonald
 Dr. William Mendelsohn *
 Bessie Milner
 Arthur M. Ross Sr. *
 Sarah (Sockie) Schaefer
 Richard Schwartz
 William H. Silver *
 Judge David W. Skolnick
 Jennie Stern
 Sylvia Ullman *
 William Wallack *
 Jane Wysolmerski
 Julius Zanker
 Abraham Zuckerman

OCTOBER 16

Joseph Arovas *
 Vivienne L. Bassett *
 M. Frederick Batter *
 Steven Beck
 Vitta Berger *
 Samuel Berger *
 David B. Bershtein *
 Virginia H. Bruson *
 Fred Cleiff
 Bess Cohen
 Jessica Miller Craig
 Yvette Eder
 Abraham A. Fisher *
 Mary Fribush
 Sigmund Gallert
 Sharon Chasin Frankel Hoxley
 Rachel Jacobs *
 Dr. Bernard Leon Kartin *
 Edward Kasper
 Dorothy Fuchs Koskoff *
 Joseph M. Koufman
 Fanny Milles *
 Robert Naden
 Mortimer J. Newman *
 Eleanor Ominsky
 Samuel Polsky *
 Alexander Rosenthal
 Rose Yayer Rundback *
 Greta Simon *
 Lionel Sirkin
 Abdul D. Steinbach *
 Isabel Stitelman
 Kate Sturtz
 Rachel Sugenheimer *
 Miriam Lee Tropp
 Frank Unger *
 Flora Rosenthal Weil *
 Clifford Zundell

OCTOBER 23

Rita Alpert *
 Max L. Baker
 Birdie C. Berman *
 Jay Bovilsky
 Mr. Jordan Braverman
 Barbara Bruson Burns *
 Benjamin H. Carroll
 Dorothy Cassin
 Lucie Dale
 Irving Eisen
 Rosalie Fagelson
 William Goodkind
 Michael Hankin
 Lester L. Hershman *
 Rose Kabatznick *
 Fanny Kern *
 Louis Lapides *
 Vivian Berman Lewis *
 Mariluz C. Mermelstein *
 Edward C. Millen *
 Saul S. Milles M.D. *
 Vivian Milstone *
 Aaron Mintz
 Emma Newman *
 Hoang Thi Nga *
 Emil Mark Polski
 Nathan Rosenthal
 Anna Schwarzcchild nee
 Rosenfelder *
 Herbert Setlow
 Abe Shiffrin
 Ethel Ullman Silverman
 Miriam Pagter Spear *
 Bernard A. Steinbach *
 Bertha M. Thalheimer
 Mina Wolfe *
 Gerald Yudkin
 Felicia Zanker-Masucci

OCTOBER 30

Lewis B. Aaron *
 Herman Alpert *
 Morris Arovas
 Irving Bachman
 Judge Robert Berdon
 Elihu Berke *
 Florence Berkowitz *
 Leopold Besser *
 Neal Bregman
 Ursule Felix Cahn *
 Mr. Charles Cahn *
 Joyce Cooley Cahn *
 Ada Cohen
 Maurice J. Dunn
 Norman Field
 Samuel M. Finer *
 Ray Goldberg
 Millie Goldberg *
 Sherman Arnold Goodman *
 Leonard Hillman
 Linda Kohn
 Melvin Kosowsky *
 Abraham Kosowsky
 Julia La Frantz *
 Morton B. Lewis *
 Sol Peter Lipman
 John E. Loeb
 Samantha Lauren Mack
 William J. Mack Sr.
 Isadore Manasevit
 Dinah M. Mendoza *
 Allan A. Moore *
 Belle Shirley Moscovitz
 Mae S. Perlin *
 Jennie M. Rosenbluth *
 Maurice H. Rudnick *
 Robert Ruth *
 Michael Jay Schaefer
 Abraham Soffer *
 Serafima Sorochan
 Louis Spodick
 Ursula Lauber Steinhardt *
 Santo Vitale
 August Weil *
 Samuel H. Yudkin *

In Sympathy

Jean & Robert Adnopoz on the passing of their daughter, Sally Gendler

Dana Brozinsky on the passing of her mother, Millicent Traiman

Shirley Chasin on the passing of her son, Glenn Chasin

Michael Dimenstein on the passing of his aunt, Doris Dimenstein

Suzanne Finkel on the passing of her mother, Theresa D'Arco

Melanie Hellwig on the passing of her grandmother, Lila Jacoby

Rabbi Brian Immerman on the passing of his grandmother, Margot Gold Saunders

Leslie Redmond on the passing of her father, Arnold Goldman

"...who donates much to charity becomes the richer for it..."

Zohar iii 110b

FEBRUARY 1, 2020– AUGUST 1, 2020

Rabbi Immerman's Discretionary Fund

The Beckerman Family
Peter Blasini & Nancy Yedlin
Benjamin & Maria Kahn
Shirley Pripstein
Michael Ross & Beth Stenger

Covid Relief

Michael & Rachel Berman
Elizabeth Koskoff
Robert & Susan Nobleman
Linda Proscio
Nancy Moss Racusin
Leslie Redmond
James Swimmer
Anne Watkins & David Berkowitz

In Appreciation of

RABBI IMMERMANN
RABBI IMMERMANN
RABBI IMMERMANN
RABBI IMMERMANN
RABBI IMMERMANN
RABBI IMMERMANN
RABBI IMMERMANN
RABBI IMMERMANN
RABBI IMMERMANN

Brenda Arovav
Brenda Arovav
Brenda Arovav
Karen Baar
Phyllis & Larry Bausher
Irwin Braverman
Dana Brozinsky & John Keegan
Robert Cole
Robert Cole
Michael Dimenstein &
Hedda Rubenstein
Dr Neil & Marlene Greenberg
Carol Greenhouse
Carol Greenhouse
Benjamin & Maria Kahn
Karen Kimball
Karen & Caroline Kimball
Karen Kimball
The Koizim Family
Lina Lawall
Joan Lipin
Barbara Marcus
Barbara Marcus
Phyllis Medvedow
Susan & David Millen
Linda Proscio
John & Martha Simpson
John & Martha Simpson
Mark & Judy Sklarz
Mark & Judy Sklarz
Ben Solnit
The Sorochan Family
The Sorochan Family
The Sorochan Family
Diana S Wakerley
The Wildes Family
The Wildes Family

In Memory of

RACHELLE DUDE
LUCY GOLDFARB
NORMAN RASHBA
ELI BAAR
SYDNEY BRUSKIN
MURIEL BRAVERMAN
ISABELLE WALTON
CLARE COLE
RICHARD H COLE
HENRY LEVENTHAL
NORMAN RASHBA
DOROTHY GREENHOUSE
HERMAN GREENHOUSE
DR. DANIEL KAHN
BERNARD SCHNEIDER, MD
MAGDA SCHNEIDER
DR. SUSAN SPENCER
MOSES KOIZIM
ARNOLD LAWALL
ABRAHAM LEVIN
HARRIET FIBEL
KALMAN FIBEL
NORMAN RASHBA
MARGOT GOLD SAUNDERS
RHONDA KORFF
DOROTHY SEIF
SAM SEIF
MARGOT GOLD SAUNDERS
LILLIAN ZELLMAN
ALBERT J SOLNIT
HANNAH HANINA
TEVYE-RASIA HANINA
GERSHON TZIFERMAN
FENMORE R SETON
LISA KIRSCH
MILTON KIRSCH

ENDOWMENT FUNDS (invested to generate annual income for specific purposes)

Jay Bovilsky Scholarship Fund (RS)

Deborah Bovilsky

In Honor of
MARK SKLARZ

Robert E. Goldberg Peace & Justice Fund

Dr. Carl Cassin
Martin Korn & Dr. Sylvia Betcher
Barbara Marcus
Barbara Marcus
Bert & Martha Weisbart
Bert & Martha Weisbart
Bert & Martha Weisbart
Bert & Martha Weisbart
Bert & Martha Weisbart

In Memory of
MYRNA K. CASSIN
DAVID S. KORN
HARRIET FIBEL
KALMAN FIBEL
MORTIMER L. COHN
SUZI VARGA FELLER
PHYLLIS WEISBART LITOFF
DAYA WEISBART
ETHEL WEISBART

Benjamin Levine Scholarship Fund (RS)

George S. Levine

In Memory of
BENJAMIN D. LEVINE

Bernard D. Miller Fund

Charles & Elinor Miller

In Memory of
BERNARD D. MILLER

Dr. Louis H. Nahum & Stella K. Nahum Music Fund

Nancy Kramer

In Memory of
ANNA VENER ALDERMAN

Isidor E. Offenbach Musical Fund

Neil & Marlene Greenberg
Russell D. Offenbach

In Memory of
WILLIAM BARKIN
FRIEDA BURKE OFFENBACH

J. Yale Rubin Fund (general)

Harold & Carole Greenbaum
Harold & Carole Greenbaum
Harold & Carole Greenbaum

In Memory of
FLORENCE GLASSBERG
IDA RUBIN LAPPIN
J. YALE RUBIN

Patt Stitzel Campership Fund (youth)

Elaine Blumenthal
Elaine Blumenthal
Elaine Blumenthal
Elaine Blumenthal

In Memory of
DONALD BLUMENTHAL
IRVING BLUMENTHAL
MILDRED BLUMENTHAL
MORRIS STROMFELD

Abraham S. & Helen Ullman Youth Fund

Joel & Lucinda Kramer
Joel & Lucinda Kramer
Andrew M. Ullman

In Memory of
ARTHUR KRAMER
BLANCHE KRAMER
HELEN G. ULLMAN

TARGET AREAS: (meant for immediate use of funds)

General

Mark & Marian Altman
The Astmann Family
Lydia Bornick
Dana Brozinsky & John Keegan
Scott & Abby Friedman
Tamar Gendler & Zoltan Szabo
Ethel & Abe Lapidés Foundation, Inc.
Leonard & Ellen Milstone
Robert & Susan Nobleman

For Covid-19 relief

Allan Hillman & Penny Marcus
Allan Hillman & Penny Marcus
Joel Rudikoff & Robin Masheb

In Appreciation of
MERAV CANAAN
SARAH GREENBLATT
MICHELLE GOLDSTEIN, with our deepest appreciation of your leadership during the COVID-19 crisis in maintaining the functioning of our synagogue and charting a path for our future.

Joel Rudikoff & Robin Masheb

SARAH GREENBLATT, with our deepest appreciation of your leadership during the COVID-19 crisis in maintaining the functioning of our synagogue and charting a path for our future.

Joel Rudikoff & Robin Masheb

RABBI IMMERMANN, with our deepest appreciation of your leadership during the COVID-19 crisis in maintaining the functioning of our synagogue and charting a path for our future.

Diana Pacetta-Ullman
Richard & Marie Shaw
Richard & Marie Shaw

RABBI IMMERMANN
CANTOR GIGLIO
RABBI IMMERMANN

In Honor of

Karen Baar
Gordon & Lillian Fain
Gordon & Lillian Fain
Gordon & Lillian Fain
Gordon & Lillian Fain
Sarah Greenblatt
Judith Hahn

HOLDEN TRAVERSE'S birthday
MERAV CANAAN
CANTOR GIGLIO
RABBI IMMERMANN
THE NADEN FAMILY
MERAV CANAAN
HAROLD & CAROLE GREENBAUM'S
great granddaughter's birth
LAWRENCE SCHAEFER

Adam, Alli & Daniel Schaefer

In Memory of

Norman & Marian Adams
Larry & Lori Adler
Jonathan & Stephanie Alderman
Jonathan & Stephanie Alderman
Jonathan & Stephanie Alderman
Estelle Baltimore
Larry & Phyllis Bausher
Alice Baxter
Peter & Nancy Berdon
Deborah Bovilsky
Irwin Braverman
Irwin Braverman
Dana Brozinsky & John Keegan
Dana Brozinsky & John Keegan
Lynn Bullard
Stuart & Hedy Bush
Stuart & Hedy Bush
David & Julie Chevan and
Robert Abels
Nicholas Cimmino
Mark Cohen & Marcy Hollander
Tom Cole
Michael Dimenstein & Hedda
Rubenstein
John & Tracy Dowgiewicz
John & Tracy Dowgiewicz
Leonard & Stephanie Farber
Jane Farrington
Burt & Suzanne Finkel
Burt & Suzanne Finkel
Bernice Giskin
Judi Glass
Terri Goldberg & Family
Charlotte Goldblatt
John & Frances Gordon
Harold & Carole Greenbaum
Harold & Carole Greenbaum
Neil & Marlene Greenberg
Neil & Marlene Greenberg
Neil & Marlene Greenberg
Sarah B. Greenblatt
Sarah B. Greenblatt
Sarah B. Greenblatt
Sarah B. Greenblatt
Sarah B. Greenblatt
Sarah B. Greenblatt
Sarah B. Greenblatt
Sarah B. Greenblatt
Sarah B. Greenblatt
Sarah B. Greenblatt
Sarah B. Greenblatt

MORTON ADAMS
ELIZABETH J. MAIZELL
STANLEY BACK
HYMAN LAND
MILLIE LAND
HERMAN BERKOWITZ
SHIRLEY BRUSKIN
NORMAN LEVINE
DAVID BERDON
NORMAN RASHBA
MOLLY BRAVERMAN
MORRIS BRAVERMAN
MORTON BROZINSKY
ANNA TREMAIN
ADELE ALTSCHULER
NECIA BUSH
SUSAN BUSH
GUSTAABELS

BARBARA MILLER-CIMMINO
ELIZABETH MAIZELL
JACOB BRESLAV
LILLIAN DIMENSTEIN

YVONNE DOWGIEWICZ
FRANK TAVARES
VIOLET FARBER
JULIET DRABKIN
FAY FINKEL
WENDY FINKEL
LILLIAN FLEISCHNER
NORMAN RASHBA
ELIZABETH MAIZELL
NORMAN RASHBA
ADELE GORDON
WALTER CAHN
NORMAN RASHBA
ANNA BARKIN
ESTHER GREENBERG
MORRIS GREENBERG
YVONNE DOWGIEWICZ
EVELYN L. GREENBLATT
MORTON H. GREENBLATT
EDNA H. LIPMAN
NORMAN RASHBA
MARGO GOLD SAUNDERS
LOUIS SCHEPS
JOEL ZABIN

Judith Hahn
Judith Hahn
Judith Hahn
Larry & Roberta Harris
Larry & Roberta Harris
Larry & Roberta Harris
The Hellerman Family
Gerald & Geraldine Katz
Paulette Kenney
Paul Knapp
Paul Knapp
Ruth Koizim
Ruth Koizim
Carolyn Kone &
Allan Rubenstein
Carolyn Kone &
Allan Rubenstein
Jerry Korman
Jerry Korman
Jerry Korman
Meir & Barbara Kryger
Meir & Barbara Kryger
Meir & Barbara Kryger
Lawrence & Stuart Lazaroff
Wendy Lebson
Wendy Lebson
Jeremy Leven
George & Diane Lublin
George & Diane Lublin
Philip & Sondra Lublin
Howard Lurie
Howard Lurie
Howard Lurie
Howard Lurie
Howard Lurie
Ellen Nasper
Ellen Nasper
The Perlman
Linda Prosko
Ellie Rachleff-Serow
Elli Rachleff-Serow
David Rodnick
David Rodnick
Joel & Lorraine Roseman
Joel & Lorraine Roseman
Edith Rotkopf
Jim & Cis Serling
Bob & Eileen Serow
Richard & Marie Shaw
Michael & Gale Silverberg
Dr. Jeffrey Smith
Lois Spivack
Bob & Maxine Wallace
Marc Wallman & Cynthia Carr
Sharon Webb
Susan Webber
Susan Webber
Marian Wexler
Marian Wexler
Marian Wexler
Cliff, True & Herschel Wolff
Bruce ZuWalcik

HAROLD HAHN, JR.
JACK SILBERBERG
MARION SILBERBERG
ELIZABETH HARRIS
HAROLD HARRIS
JAMES WELSCH
BRETT DAVID HELLERMAN
MORRIS KARMASIN
CHARLES HENRY KENNEY
JEROME GREENWALD
In loving memory of RONNI KNAPP
FANNY GOLDFARB
HARVEY KOIZIM
ESTELLE A. KONE

MAX RUBENSTEIN

ANN GALLERT
FANNIE KORMAN
MORRIS KORMAN
SAMUEL KRYGER
DR. EARL ROSENBLUM
FRANK TAVARES
LINDA LAZAROFF
JANE SILVERMAN WAIFE
GERALD MARCUS
MARTIN LEVIN
MATILDA LUBLIN DEFEQ
TESSIE ROZEN WEISS
MATILDA LUBLIN DEFEQ
MICHAEL HOZER
IDA LURIE
SELMA MATLOFF
NORMAN RASHBA
SHIRLEY SALOWITZ
AARON NASPER
DORIS NASPER
PHILIP PERLMAN
RHODA KORFF
MARSHALL RACHLEFF
ESTHER SMITH
HARVEY RODNICK
RUTH RODNICK
MILDRED FESTA
SANTO FESTA
RACHEL ROTKOPF
FRANK TAVARES
LEAH SEROW
JENNIFER SHAW
SIDNEY S. SILVERBERG
ROBERT SMITH
IRVING SPIVACK
RICK WALLACE
MILTON WALLMAN
SYLVIA PORTOFF
MAL WEBBER
RAE WEBBER
JOHN FOX
NORMAN RASHBA
LAUREL VLOCK
BARBARA WOLFF
JEFFREY M. POSTMAN

Adult Ed/Seniors

Steven Hirth & Nino Zaridze
Barbara Marcus

Barbara Marcus

In Memory of

NORMAN RASHBA
HARRIET FIBEL

KALMAN FIBEL

Building

Richard Chorney &
Lauren Chorney Asnis
Meir & Barbara Kryger
Meir & Barbara Kryger
Chuck & Judy Naden

In Memory of
ALICE CHORNEY

ROSE KRYGER
EVELYN ROSENBLUM
CANTOR BERTRAM NADEN

Cemetery

Peter & Saralee Black
Ira & Sara Brody
Ira & Sara Brody
Ira & Sara Brody
Ira & Sara Brody
Linda Greenhouse
Linda Greenhouse
Ken & Ellie Levine
Mr. & Mrs. Andrew Postman
Andrew & Maryann Postman
Melissa Saxe Rich
Larry Schaefer & Lina Lawall
Larry Schaefer & Lina Lawall
Michael & Gale Silverberg
Ken Winer

In Memory of
LOUIS BLACK
ARNOLD BRODY
GLENN BRODY
ISADORE STRAUSS
LILLIAN STRAUSS
DOROTHY GREENHOUSE
H. ROBERT GREENHOUSE
ZELLY LEVINE
ALAN POSTMAN
PFC. ERIC SOUFRINE
HERBERT ALFRED SAXE
BERNARD N. SCHAEFER
JULIET DRABKIN
LOUIS SCHEPS
FLORENCE WINER

Hunger Fund

Alice & Richard Baxter
Rochelle (Ricci) Cummings
Hoffman/Kamrat Family
Aaron Singer & Elizabeth Caspe

For Covid-19 relief

Irving & Harriet Calechman
Jack & Harriet Fast
Dana & Roberta Friedman
Dana & Roberta Friedman
Dana & Roberta Friedman
Dana & Roberta Friedman
Richard & Nedra Gusenburg
Norman Rashba z"l
Norman Rashba z"l
Steven & Amy Rashba
Marc Schwartz

In Memory of
NORMAN RASHBA
BARBARA MEZOFF
ELIAS FRIEDMAN
THELMA FRIEDMAN
HELEN SANDERS
LAWRENCE I. SANDERS
CHERYL SATIN GUSENBURG
GERTRUDE GOLDBERG
SONYA RASHBA
NORMAN RASHBA
SIDNEY SCHWARTZ

Library

Dr. Martin E. Gordon
Dr. Martin E. Gordon
Dr. Martin E. Gordon
Dr. Martin E. Gordon
Dr. Martin E. Gordon

In Memory of
BELLE GORDON
EVELYN GORDON
ROBERT LAPIDES
RUTH LAPIDES
HERBERT SACKS

Music

Rabbi Steve & Caryl Steinberg

Robert Miller
Peter & Claudia Nielsen
Robert & Susan Nobleman
Michael, Ellen, Seth, Lily
Rosenthal & Diane Purvin
Michael, Ellen, Seth, Lily
Rosenthal & Diane Purvin

In Appreciation of
CANTOR ARTHUR GIGLIO

In Memory of
ANTON STENZLER
MARION SILVERBERG
IRVING BERKOWITZ
EDDIE ROSENTHAL

GERTRUDE ROSENTHAL

Michael, Ellen, Seth, Lily
Rosenthal & Diane Purvin
Michael, Ellen, Seth, Lily
Rosenthal & Diane Purvin
Michael & Gale Silverberg

RAE ROSENTHAL

HERBERT SCHAFFER

MARION B. SILVERBERG

Nursery School Fund

Tessa Bialek & Boris Sigal
Maureen Burke & Paul Cislo
Alex & Michelle Forte
Curt Scharfe & Shayna Roosevelt
Michael & Amy Wyler

Noel & Iris Chemosky
Michael & Erika Forte
Michael & Erika Forte
Michael & Erika Forte
Michael & Erika Forte
Michael & Erika Forte
Steve & Alisa Germaine
Steve & Alisa Germaine

In Memory of
LOUIS CHERNOSKY
ALEXANDER PERLMAN
ABBEY PERLMAN
SYDELLE PERLMAN
MARCI SELLERS
MARGO GOLD SAUNDERS
ROSALIE BYER
SEYMOUR BYER

Religious School

Bev Franken & Family
Jim & Cis Serling

In Memory of
LARRY FRANKEN
MARSHALL R. LAVIN

Social Action

Paula Adelson
Betsy Barnston
The Berdon Family
Sally Goodis
Barbara Marcus
Barbara Marcus
Nancy E. Moss Racusin
Nancy E. Moss Racusin
Michael Ross & Beth Stenger
Richard Ruth & James North

In Memory of
SIMON GROSSMAN
JACK DUDLEY BARNSTON
NANCY T. BERDON
GARY RACUSIN
HARRIET FIBEL
KALMAN FIBEL
CAROLINE OSTER
MR. AARON RACUSIN
NORMAN RASHBA
VIVIAN RUTH

SPECIAL FUNDS:

Herbert N. Brockman Rabbinic Endowment Fund
David & Merle Silver

Joan Lipin
George & Diane Lublin
George & Diane Lublin
Barbara Marcus
Barbara Marcus
Sanford & Carole Schreiber
Sanford & Carole Schreiber
Sanford & Carole Schreiber

In Memory of
FRANK TAVARES
UNCLE GERALD ROZEN
LOUIS WEISS, loving father
HARRIET FIBEL
KALMAN FIBEL
NORMAN RASHBA
BERNICE DREW TROPP
JACK B. TROPP

SPECIAL THANK YOU

We would like to extend a special thank you to Jerome and Roslyn Meyer for their generous support of the Mishkan Israel Nursery School.

We would like to extend a special thank you to The Brotherhood of Men & Women, Alice & Richard Baxter, and Aaron Singer & Elizabeth Caspe for their generous donation of a new commercial size dishwasher for the CMI kitchen.

SEPTEMBER WORSHIP SERVICES & STUDY

SHABBAT KI TAVO

Duet. 26:1-29:8

Friday, September 4

5:30 p.m. Early Oneg
6:00 p.m. Evening Service

Saturday, September 5

10:30 a.m. Morning Service celebrating the Bar Mitzvah of Benjamin Kruger

SHABBAT NITZAVIM-VAYEILECH

Deut. 29:9-31:30

Friday, September 11

5:30 p.m. Early Oneg
6:00 p.m. Evening Service

Saturday, September 12

10:30 a.m. Morning Service celebrating the Bat Mitzvah of Mollee Merritt
7:00 p.m. Community Selichot Service

MEMORIAL SERVICE

Sunday, September 13

2:00 p.m. Memorial Service at CMI Cemetery
701 Whalley Ave., New Haven

ROSH HASHANAH

Friday, September 18

8:00 p.m. Erev Rosh Hashanah Evening Service

Saturday, September 19

9:00 a.m. Tot Program
10:00 a.m. Morning Service
2:00 p.m. Family Service

Sunday, September 20

10:00 a.m. 2nd Day Tashlich

SHABBAT HA'AZINU

Deut. 32:1-32:52

Friday, September 25

5:30 p.m. Early Oneg
6:00 p.m. Evening Service

YOM KIPPUR

Sunday, September 27

8:00 p.m. Kol Nidre

Monday, September 28

9:00 a.m. Tot Program
10:00 a.m. Morning Service
12:30 p.m. Reflection Service
2:00 p.m. Adult Discussion
2:00 p.m. Family Service
3:00 p.m. Afternoon Service
4:45 p.m. Memorial /Concluding Service

OCTOBER WORSHIP SERVICES & STUDY

SUKKOT

Friday, October 2

5:30 p.m. Early Oneg
6:00 p.m. Erev Sukkot Service

Saturday, October 3

10:30 a.m. Sukkot Morning Service celebrating the Bar Mitzvah of Matthew Goldblum

SUKKOT/SIMCHAT TORAH

Friday, October 9

10:30 a.m. Sukkot Service with Yizkor
5:30 p.m. Early Oneg
6:00 p.m. Simchat Torah Service

Saturday, October 10

10:30 a.m. Simchat Torah Service celebrating the Bat Mitzvah of Isabelle Brown

SHABBAT BEREISHIT

Gen. 1:1-6:8

Friday, October 16

5:30 p.m. Early Oneg
6:00 p.m. Evening Service

Saturday, October 17

9:00 a.m. Torah Study
10:30 a.m. Morning Service celebrating the Bat Mitzvah of Cecelia Brin

SHABBAT NOACH

Gen. 6:9-11:32

Friday, October 23

5:30 p.m. Early Oneg
6:00 p.m. Evening Service

Saturday, October 24

9:00 a.m. Torah Study
10:30 a.m. Morning Service

SHABBAT LECH-LECHA

Gen. 12:1-17:27

Friday, October 30

5:30 p.m. Early Oneg
6:00 p.m. Evening Service

Saturday, October 31

9:00 a.m. Torah Study
10:30 a.m. Morning Service

Service times are subject to change. For the most up-to-date information and to hear sample tunes from services, go to <http://cmihamden.org/worship>.



ROBERT E. SHURE, INC.
 — FUNERAL HOME —

Dedicated to the Dignity and Respect of Tradition.

543 George Street, New Haven, CT 06511

Robert E. Shure
 Founder

203-562-8244
 shurefuneralhome.com

James M. Shure
 President

TO OUR READERS

If you use a service from one of our advertisers, please inform them that you are doing so because you saw their ad in the Bulletin.

If you would like to place an ad in the Bulletin, Contact Sarah Legassey at

(203) 288-3877

*Celebrating
 Our 50th Anniversary!*



TOWER ONE • TOWER EAST
An Active Senior Living Community

Contact Rebecca Goodman Olshansky
 (203) 772-1816, ext. 250 rebecca@towerone.org
 www.towerone.org



Ear Nose and Throat
 Specialists of Connecticut

David I. Astrachan, M.D.
 Craig S. Hecht, M.D.

David I. Astrachan, M.D.

Ear, Nose and Throat Medicine • Head and Neck Surgery

Phone 203.248.8409
 Fax 203.281.2905
 www.entct.com

Larry Lazaroff **Arnold's Jewelers**
 The North Haven Diamond Center

117 Washington Avenue
 North Haven Shopping Center
 North Haven, CT 06473

Phone: (203) 239-4291
Fax: (203) 230-9287
Email: laztwo@aol.com
Web: TheArnoldsjewelers.com

Benefit Congregation Mishkan Israel

Ask us about
establishing a fund, trust or annuity
to ensure CMI's future.

Charitable giving strengthens our Community
and provides the donor with tax savings.

Jeffrey Hoos
*Chair,
Board of Trustees*

Jewish Foundation of Greater New Haven



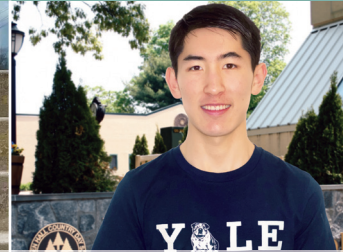
All of us. One Foundation.

Lisa A. Stanger, Esq.
Director
203 387-2424 x382
lstanger@jewishnewhaven.org

THE HAMDEN HALL EXPERIENCE: CREATING ENDLESS OPPORTUNITIES FOR OUR STUDENTS



Orly Richter, Class of 2020
Brown University



Michael Lee, Class of 2020
Yale University



Jasmine Johnson, Class of 2020
UConn / Day of Pride Scholarship



Eduardo Pagliaro-Haque, Class of 2020
Yale University

VISITING OPPORTUNITIES:
Coffee and Campus Tours Sept. 17 / 9-10:30 a.m.
Oct. 15 / 9-10:30 a.m.
Open House Nov. 1 / 1-3 p.m.
Or call 203.752.2610 to schedule a private tour.



HAMDEN HALL COUNTRY DAY SCHOOL

Educating students in PreSchool through Grade 12
1108 WHITNEY AVE. HAMDEN, CT. 203.752.2610
WWW.HAMDENHALL.ORG TRANSPORTATION AVAILABLE

MONUMENTS ERECTED IN ALL CEMETERIES

NOLAN'S HAMDEN MONUMENT COMPANY LICHTENSTEIN COMPANY

323 WASHINGTON AVE., HAMDEN, CT 06518

(203) 288-8486 • (203) 287-1593

CT Toll Free Only (800) 852-8865 • Fax (203) 287-1593

JOHN R. NOLAN
MICHAEL F. NOLAN

nolansmonuments@att.net

ADVERTISING SUPPORT

Weller Funeral Home

The oldest Jewish family funeral home serving the Jewish community of greater New Haven with dignity since 1881

Danny Weller Klein

Fourth generation funeral director at Weller Funeral Home

493 Whitney Avenue, New Haven, CT 06511

203-624-6912 www.wellerfuneralhome.com

Torah Study

Rabbi Immerman's weekly Shabbat morning Bible Study meets Saturday mornings at 9:00 a.m. – 10:00 a.m. No prior knowledge is required.



Intro to Hebrew

Rabbi Steinberg's class will resume to meet once the synagogue can physically open. Registration will be required.

Intro to Judaism

This class is for beginners to learn about the basic elements of the Jewish tradition, its history, theology and observances, both surrounding the life-cycle of a Jew and the yearly festivals. Registration is required.

Intermediate Hebrew Group

The group studies biblical Hebrew grammar and vocabulary. If interested, contact Lisa Marcus at lmarcusphd@gmail.com

ADULT EDUCATION AT CMI



For more information contact Sarah Legassey at 203-288-3877 or slegassey@cmihamden.org

CMI
785 Ridge Road
Hamden, CT 06517
203-288-3877
www.cmihamden.org

HHD FOOD DRIVE



As is our custom, CMI will be sponsoring its annual drive to address food security in our local community.

Make a difference and donate!

We do this in the hope of helping those whose fast will not end at sundown. In view of current Covid-19 restrictions, rather than collecting donations of food, CMI is asking you to consider donating online to our Hunger Fund at cmihamden.org in support of the Jewish Family Service Food Pantry. Your donations will be used to purchase grocery gift cards for Food Pantry clients. You may also contribute by making a personal check payable to CMI and directing your gift to the Hunger Fund.

Mail your donation to CMI or donate online at cmihamden.org

Please be generous in helping those less fortunate. Remember...anything you can spare can help!

Thank You for your time and donation!

CMI • 785 Ridge Road, Hamden, CT 06517 • 203-288-3877 • www.cmihamden.org



Congregation Mishkan Israel wants to help you start the New Year with the gifts of peace, hope and sweetness

Buy one for yourself. Give one as a gift. Spread the joy.

Purchase a Rosh Hashanah Gift Bag and support CMI's programs and services

- Bags will include
- Locally Grown Apples
- 8oz Jar of Local Honey
- A Round Challah
- A Small Bottle of Wine
- A Set of Holiday Dishtowels
- Shabbat Candles
- Brotherhood Coffee Shop Gift Card
- Reusable Shopping Tote Bag

Suggested donation \$54 per bag.

Name: _____

Email address: _____

Phone number: _____

Number of gift bags: _____ Total : _____

Ways to complete your order

You may complete this form and send in a check payable to CMI. You may go online cmihamden.org/hhd to place your order and pay with a credit card.

You may call Sarah Legassey at 203-288-3877 to submit your order. She can then either take your credit card information or you can send in a check payable CMI

Please return your order no later than **September 10** with your check payable to CMI You will be notified of the safe, contactless pick up at the Synagogue

CMI • 785 Ridge Road Hamden, CT 06517 • 203-288-3877 • cmihamden.org

The Congregation Mishkan Israel
785 Ridge Road
Hamden, CT 06517

Next Bulletin Deadline 11/1/20

Time Value Data
Deliver No Later than September 1

Non Profit Org
US POSTAGE
PAID
Permit #156
New Haven, CT

THE CONGREGATION MISHKAN
ISRAEL BULLETIN

September/October 2020 Series 105, #1
THE CONGREGATION MISHKAN ISRAEL
785 Ridge Road, Hamden, CT 06517
Phone: (203) 288-3877 Fax: (203) 248-2148
<http://cmihamden.org>

Rabbi Brian P. Immerman x236

rabbi@cmihamden.org

Rabbi Emeritus Herbert N. Brockman, Ph.D. D.D. x243

cmirabbi@cmihamden.org

Cantor Arthur Giglio x244

cantorg@cmihamden.org

Merav Canaan, Temple Administrator x241

mcaanaan@cmihamden.org

Michelle Goldstein, Religious School Director x237

mgoldstein@cmihamden.org

Alex Forte, Director of Youth Activities

mityor@cmihamden.org

Susan Witten Nason, Early Childhood Director x245

sperry@cmihamden.org

Michael Dimenstein, President

president@cmihamden.org



g mar chatimah tovah

Wishing You an Easy Fast