



The Congregation Mishkan Israel

More than a place. We're a community.

JANUARY/FEBRUARY 2020

Series 104 Number 3

JANUARY & FEBRUARY 2020

**I HAVE A
DREAM**



**ANNUAL
MARTIN LUTHER KING JR.
INTERFAITH SERVICE
FRIDAY, JANUARY 17
7:00 PM**



JANUARY/FEBRUARY BIRTHDAY BLESSINGS

Celebrate your birthday at Family Services. January birthdays will be celebrated at the Family Service on Friday, January 10 at 6:00 p.m. and February birthdays will be celebrated at Family Service on Friday, February 14 at 6:00 p.m. If your child will be attending services in their birthday month, please call Tamara at 203-288-3877.

ONEG SHABBAT & PULPIT FLOWERS

One of the nicest ways to honor a special occasion is to sponsor an Oneg Shabbat and/or pulpit flowers for services.

To arrange for your sponsorship contact Sarah at (203) 288-3877 or slegassey@cmihamden.org.



IN CASE OF INCLEMENT WEATHER

In case of inclement weather, please check WTNH for announcements on delays and closings. As a rule, services are not cancelled.

When appropriate, we also will send a special e-newsletter and post updates on our website and facebook.

In Memoriam,

Justice Robert Berdon
 Stacy Fambro
 Stanley Swimmer

May their memory be for a blessing.

In Sympathy

Scott Friedman on the passing of his father,
 Philip Dicks

TODAH RABAH SHABBAT WELCOME TEAM

Thank you to our greeters:

November

- 1 Howard Lurie & Karen Kimball
- 2 Martha Weisbart
- 8 Joan Lipin & Howard Lurie
- 9 Albert Glassman
- 15 Ivey Cooley & Richard Shaw
- 16 Richard Shaw
- 22 Albert Glassman & Richard Shaw
- 29 Lorri Brown-Ominsky & George Ominsky

December

- 6 Ivey Cooley & Albert Glassman
- 13 True & Cliff Wolff
- 20 Richard & Marie Shaw
- 27 Richard & Marie Shaw

PROTOCOL FOR MI SHEBERACH (HEALING PRAYER) LIST

To add or delete a name to our Mi Sheberach (healing prayer) list that is read at services please call Rabbi's office at (203) 288-3877. You must have permission from the individual to have their name read in public. (There is always the Hebrew option as well.) Names will remain on the list for one month unless renewed or requested to be deleted. If you join us for services you can add a name that evening by signing in with the greeter prior to the beginning of services.

IS SOMEONE IN THE HOSPITAL?

Area hospitals are not permitted to notify us when a congregant has been admitted. If you know of a congregant who is in the hospital and would appreciate a call or visit, please contact Rabbi Immerman's office at (203) 288-3877 or rabbi@cmihamden.org

PAY ONLINE!

Did you know you can pay CMI directly from CMI's website or weekly e-news? The convenience is amazing! You can pay your Dues, Religious School, Nursery School, Make a donation, and special events. Go to: <http://cmihamden.org/who-we-are/giving/>.



A MESSAGE FROM THE RABBI

Rabbi Brian P. Immerman

It's hard to believe that next month our checks will read January 2020. It seems only yesterday that we were celebrating the beginning of a new millennium, filled with fear of the Y2K bug and anticipation of all that was to come in the future. As the 1900's came to an end, our world was filled with endless possibilities as the internet began its slow domination. In the Jewish world, the Reform movement was starting to envision what our communities would look like in 10-20 years through an initiative called Synagogue 2000. This program offered an intentional method for the Reform movement to adapt faster to trends in Judaism, most notable the desire of many modern Jews to embrace more Jewish traditions while maintaining the core Reform principles of personal choice. One outcome was Mishkan T'filah, allowing us to pray according to the traditional service and allowing for more alternative readings than in Gates of Prayer. Our community didn't directly participate in the program, which was limited to a handful of congregations, but we continued to grow and embrace change throughout the two decades since.

In 2001 Rabbi Danny Frelander, then the UAHC's director of programs (the UAHC is the predecessor of the URJ), noted that "At the core of our philosophy is that how the synagogue does business is always going to be changing, but organizations move really slowly and unless you instigate change, it doesn't come automatically." As we start the new decade, Synagogue 2000 is long gone, replaced by a much broader initiative called, unsurprisingly, Synagogue 3000. There are now many organizations dedicated to transforming Jewish life, from education to prayer to social justice. The growth of these organizations, technology, and the way we live in 2020 present a different challenge to synagogue life than those that spurred Rabbi Frelander's comment. Yet the truth remains, Mishkan Israel, like all congregations, must always seek innovative ways to engage our community in our 4000 year old tradition. Even at 180, the way that CMI operates is always changing. Not everything changes, of course. As Rav Kook, said, "What is old will become new and what is new will

become holy." Jews always look backward for guidance as we chart our course for the future. CMI will continue to be dedicated to Social Justice, Education, and Spirited Worship while remaining committed to creating an inclusive and welcoming community. In the next year we will celebrate our 180th birthday as well as the sixtieth anniversary of our beautiful and sacred home in Hamden. Already, we have started unearthing historic pictures of the building from the New Haven historical society that depict the same activities we offer now – learning in the lounge, studying in the library, and praying in the sanctuary. At the same time we have to embrace a changing world.

Our board is valiantly examining three major areas for progress – membership commitments and retention, new development strategies, and opportunities to use our building in new and innovative mission-appropriate ways. Internally, we are working on our communication strategies, program registration, membership database software, and ensuring that our program staff's time aligns with the priorities of our congregants. We are not alone in this process, synagogues across the country understand that the Jewish world is rapidly changing and that we must embrace change swiftly in order to remain centered in people's lives.

I am excited to be on this journey with our community and to have such an incredible staff and dedicated group of lay leaders to partner with me. I invite you to reach out to the board and engage in this process as it continues to unfold and to let me know what you think are the most exciting innovations that we should embrace.

As we begin 2020, a new year and decade, I wish you all a season of hope, joy and meaning.

SAVE THE DATE

Cantor's
CONCERT

April 25, 2020



CANTOR'S NOTES

Cantor Arthur Giglio

January and February may be cold and forbidding outside but the warmth and joy at CMI will keep you cozy! Friday, January 17th is our annual Martin Luther King Jr. Interfaith

Service. Every year it is a highly anticipated event, and this year will be no different. It is a celebration of the very things that make us strong; our diversity and our differences. We have had divisiveness and intolerance forced upon us as some sort of new normal. The Martin Luther King Memorial Service is a reality check that says we will not accept or tolerate the new normal. I will be bringing you various surprise musical organizations from all over Connecticut to share in the experience, so please be there and bring your children, friends and neighbors.

It is never too soon to start talking about our Cantor's Concert Fundraiser and this year I am incredibly excited to tell you that one of our own will be coming home to bring his incredible talent to the CMI stage. Mark Berman, a.k.a. the brother of Barry and Ken Berman, will be here to bless us with his unique jazz keyboard and vocal talents for one unforgettable evening. Mark grew up in CMI, went to Hebrew school and became a Bar Mitzvah here (along with his brothers, Barry and Ken). He was active in the youth group ("MITY"...at the time) and made a lot of lifelong friends. According to Mark, "My interest in developing music and writing, certainly can be credited (or blamed) on CMI. I helped come up with the music for a Friday night service when I was 15. It was for a local NIFTY conclave. The very first crush I had was a girl from a CMI youth event!"

continued on page 10...



Schmaltz is the Word!

Calling all wanna-be actors, singers, and (excuse the expression) hams.

We want you to be a part of this year's Purim Spiel. All ages and (in)experience levels welcome! Be part of the fun at the Purim service on March 9th. Stay tuned for an organizational meeting in January.

Questions?

Email Julie Chevan at julie.chevan@gmail.com



PRESIDENT'S MESSAGE

Sarah B. Greenblatt

Building a Stronger CMI Community!

In my Rosh Hashana speech, I shared that Congregation Mishkan Israel is experiencing new membership and fiscal realities. While we remain the largest synagogue community in the Greater New Haven area, we are a smaller congregation than we have been in other eras of our close to 180-year history. This is a common membership affiliation trend that is impacting congregations throughout our Jewish and non-Jewish community in New Haven as well as nation-wide. Over the past decade, CMI has seen a 25% drop in our dues-paying members – from close to 600 to 428 in November 2019. While we continue to welcome many new member families to our vibrant community, it is important to understand that fewer membership commitments mean we have to trim our operating budget while also asking for more financial support.

To answer questions and seek fresh ideas for addressing this new reality, the Board held congregational conversations between Rosh Hashana and Yom Kippur where we heard enlightening recommendations related to four key areas, including: 1. How we can retain and support existing members by increasing opportunities for involvement in our vibrant CMI community at different times in the life cycle; 2. How we can increase new CMI Membership Commitments; 3. How can we increase income above dues, e.g. through creative building utilization, increased tzedakah, diverse special events, or an intentional fundraising campaign to support our operating budget, refresh our building, and grow our Temple and Rabbinic endowment funds; and 4. How can we adopt even more strategies for controlling expenses.

The Board then held a retreat in late October 2019 to review lessons learned from the meaningful congregational feedback. Three workgroups emerged to address key ideas related to membership engagement and support/dues structure; development; and building utilization. Members of these three time-limited workgroups are meeting to creatively plan and implement a mix of strategies to welcome new congregants and engage existing

continued on page 5...

President's Message *continued...*

members in diverse educational, worship and volunteer community activities; explore options for how to share our spiritual home with others in the non-profit community; and build innovative approaches for CMI members to provide financial support above dues.

Overall, we are hoping that all members of our CMI family will find ways to give of their time, their talents and their treasures (financial commitments) to enhance and strengthen our CMI community. If you have interests in finding out about or joining any of these workgroups, please let me know. I can be reached at president@cmihamden.org.

World Zionist Congress Delegate Elections Promote Opportunities for Reform Movement Voice

Between January 21-March 11, 2020 (Martin Luther King Day through Purim), Jews around the world will have the opportunity to vote for delegates to the World Zionist Congress – an international body of 500 delegates that meets in Jerusalem every 5 years. Known as the Parliament of the Jewish People, the Congress enables delegates to exert ideological influence on both Israeli society and the global Jewish agenda, as well as allocate financial and other resources to various organizations – including the Reform Movement – in Israel.

Founded by Theodor Herzl in 1897, the Zionist Congress (as it was originally known) was the legislative body of the Zionist Organization (ZO), a non-governmental entity that promotes Zionism. Today the two bodies are known respectively as the World Zionist Congress (WZC) and the World Zionist Organization (WZO).

The 38th World Zionist Congress is scheduled to meet in Jerusalem in 2020; the elections determine the size of the various delegations that will attend. Currently the United States has 145 delegates that will participate – the largest single delegation outside of Israel. Thanks to a robust turnout in the 2015 elections, 56 of the 145 delegates (39%) represent the Reform Movement and, as a result, have been able to ensure that more than \$4 million a year (\$20 million over five years) is being directed to the Israeli Reform Movement. By comparison, the Israeli government annually provides nearly \$1.1 billion to Orthodox and Heredi institutions in Israel. A strong election

turnout among North America's Reform Jews and our supporters and allies will ensure that financial resources will continue to flow to our Israeli movement – including Reform congregations and institutions. It will also allow us to fill leadership positions in some of Israel's national institutions, including the World Zionist Organization, the Jewish Agency for Israel, and Keren Kayemeth LeIsrael – Jewish National Fund.

Having a leadership role in the Jewish National Fund will enable us to ensure that decisions about government and public spending over the Green Line – including land purchases – reflect the Reform Movement's values and positions. Only in this way can we continue to build a democratic society in Israel that truly reflects the Jewish values we hold so dear: pluralism, equality, economic justice and peace. What's more, because the Jewish Agency for Israel and the World Zionist Organization support programs of the World Union for Progressive Judaism (WUPJ), high voter turnout will prove beneficial for the WUPJ congregations and for the Netzer Olami and Tamar – which offer programming for Progressive Jewish youth and young adults in communities around the world.

During the months of January through March 2020, Congregation Mishkan Israel will offer opportunities for congregants over age 18 by June 30, 2020 to review the official platform of the World Zionist Organization and the Zionist Movement and to vote in the election for delegates to the World Zionist Congress (for a minimal processing fee). Watch for information in our weekly e-bulletins. If you have questions or would like to participate in organizing the vote, please contact Sarah Greenblatt at president@cmihamden.org.

SAVE THE DATE

Martin Luther King Service

January 17, 2020
7:00 PM



SUSTAINING CMI TODAY AND FOR THE FUTURE

Now more than ever, it is critical that we act to **Sustain CMI** for future generations. Over the next six months, we will highlight the many ways that you can act now to secure CMI through gifts that can be given now or planned for the future. In this bulletin, we will focus on three ways to give now: Gifts of Stock, IRA Charitable Rollover (70 1/2 +), and Charitable Lead Trusts. And, if you're not able to give through one of these methods, please consider donating directly at <http://cmihamden.org/giving>.

When you make a planned gift to Congregation Mishkan Israel, you are ensuring that the work of Mishkan Israel will continue for future generations. Please reach out to Sue McDonald at suemcdonald@sbcglobal.net or 203-249-0244 if you are interested or have any questions.

Gifts of Stock

How it Works: You transfer long-term appreciated stocks, bonds or mutual fund shares you have owned for one year or more to the Mishkan Israel. Please call CMI office for broker information, account and DTC numbers.

Advantages: You receive an immediate income-tax deduction for the fair market value of the securities on the date of transfer, no matter what you originally paid for them. You pay no capital gains tax on the transfer.

Example: In this example, you see that donating the stock results in no capitals gains tax being paid, a larger itemized deduction, and more money for the charity of your choice.

	OPTION 1 Gift of \$10,000 Cash	OPTION 2 Gift of \$10,000 stock
Initial cost basis of securities/appreciation	Not applicable	\$2,000/\$8,000
Capital gains tax saved or paid, assuming 20% rate ¹	Not applicable	\$1,600
Personal income tax savings ² (0.35 × amount donated to charity)	\$3,500	\$3,500
Net Tax savings	\$3,500	\$5,100

Above example assumes 35% tax bracket, a cost basis of \$2,000, that the investment has been held for more than a year, and that all realized gains are subject to a 20% long-term capital gains tax rate. This does not take into account any state or local taxes.

IRA Charitable Rollover for Those 70 ½ and Over

What It Is: The IRA Charitable Rollover creates an opportunity for donors who are 70 ½ and over to distribute up to \$100,000 from their IRA/Roth IRA directly to CMI without realizing any income tax on the distribution amount. (If you liability no longer itemize, this allows you to still realize tax advantages for your giving.)

How It Works: You must contact your plan administrator to have the distribution sent to and payable to CMI.

Advantages: If you already have enough income and your IRA minimum distribution requirement only increases your tax liability, this allows you to donate your distribution directly to CMI without realizing federal or Connecticut income tax liability on the amount of the distribution (you will not have to pay Connecticut or Federal income tax on that amount). In addition, if you have a taxable estate, your IRA, will be subject to income and estate taxes (once both spouses are deceased and the IRA is left to your children, grandchildren or other individuals). In fact, in a taxable estate, your non-spouse beneficiaries could end up with 25 cents on the dollar for your IRA assets! The rollover allows you to remove some of those tax-plagued assets from your estate while also providing you with the opportunity to make a significant charitable gift. In addition, if you have a secondary smaller IRA, which is not a necessary income source, this is an opportunity to donate that IRA to our community and make a significant and much needed impact.

Example: Mr. Cohn distributes \$18,000 from his IRA to CMI to establish an endowment fund in honor of his grandchildren.

Without the IRA Charitable Rollover: Mr. Cohn would be subject to federal and Connecticut income tax on the amount of the distribution (even if it went straight to charity) -- although he could claim a charitable income tax deduction on his federal return (assuming he itemizes) for the donation, he would not be able to do that on a Connecticut income tax return and would have Connecticut income tax liability for the distribution—even if it was given directly to charity.

With the IRA Charitable Rollover: The \$18,000 distribution is not taxable income for federal and Connecticut income tax purposes (even if it is being used toward his required minimum distribution)—it is tax neutral. Mr. Cohn has created a wonderful Jewish legacy for his family and community, reduced his Connecticut income tax liability, and reduced his taxable estate!

Ten things to know about the IRA Charitable Rollover:

1. The distribution from your IRA must be made directly to the charitable organization.
2. You must be 70 ½ or older at the time that the distribution is made (note, this differs from the required minimum distribution where you only need to turn 70 ½ during the year).
3. The IRA Charitable Rollover is permanent; you can do it this year and every year.
4. The maximum amount that can qualify is \$100,000.
5. The IRA Charitable Rollover will satisfy your required minimum distribution.
6. You can rollover more than your required minimum distribution and in addition to your required minimum distribution (up to \$100,000 to charity).
7. The amount of the IRA Charitable Rollover does not need to be reported as income on your federal or Connecticut income tax return. This also means you do not need to itemize in order to realize the advantage of this type of gift.
8. Only distributions from traditional and Roth IRAs qualify.
9. To qualify, the distribution can only be for charitable purposes and cannot be designated for a donor advised fund, supporting organization, private foundation or life-income gift (charitable trust or annuity). No goods or services can be received in exchange for the distribution (i.e. tickets or dinner).
10. In most cases, you will need to contact your IRA plan administrator/financial institution.

Please consult your professional advisor concerning your tax plans.

Charitable Lead Trust

What It Is: A trust that allows you to contribute significantly to CMI now, while planning for the future of your family or a loved one.

How It Works: The trust is established and a portion of the trust's investment yield is distributed annually to CMI. Then, after a specified time or a lifetime, the remainder of the trust is transferred back to the donor or to beneficiaries of the donor's family.

Advantages:

- Reduced capital gains, income or estate tax in variable combinations
- The donor can provide current support to organizations they care about while also making sure loved ones are provided for after his or her lifetime
- The donor can qualify for significant gift or estate tax savings while transferring assets to their heirs



RELIGIOUS SCHOOL NEWS

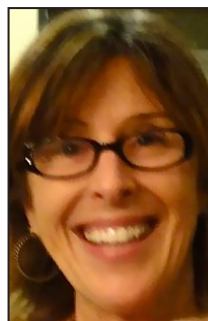
Michelle Goldstein
Religious School Director

We kick off 2020 right away with a Tot Shabbat on Friday, January 3rd! Our youngest students (Preschool-1st grade)

will be leading a Tot Shabbat later in the year, so this is a great opportunity to come and join us and see what it is all about! On Sunday, January 5th, our K-1 class will have their Shabbat Box family program. Students and their parents will listen to “The Shabbat Box” story and then make their own Shabbat boxes for their families. There is also a 4th and 5th grade youth group event after school that day. On Friday, January 10th, four of our high school students will travel to Washington, D.C. to participate in the Religious Action Center’s L’Taken program. They will be learning about different current events issues and the Jewish perspective, ultimately going to congressional offices on Monday morning to lobby. Also on Friday, January 10th, the 5th grade class will lead the Family Service at 6:00 p.m. On Sunday, January 12th, our 6th and 7th graders and their parents will join the Anti-Defamation League for a program called Confronting Anti-Semitism. For the first time this year we are hosting an event “CMI’s Got Talent” on Saturday evening, January 25th. The event will begin with a pasta dinner at 5:30 as we watch members of all ages share their talents. The cost of the event is \$10/adult and is free for kids. If you are interested in participating in CMI’s Got Talent, please contact Michelle (mgoldstein@cmihamden.org). On Sunday, January 26th, the Religious School will be participating in Kol Shira at the Towers in New Haven. This regional religious school event has become an annual part of our calendar and community! It is so important to come and be part of the greater New Haven community and join us there. There is also a High School Social Action Experience Event that day.

On Sunday, February 2nd, there is a 6th and 7th grade youth group event after Religious School. Tot Shabbat in February is on the 7th at 5:30 p.m. On Sunday, February 9th, the school will participate in a Tu B’Shevat Seder at 11:00 a.m. and parents are welcome to join us! The 4th grade will help lead services on Friday, February 14th

at 6:00pm. School will be closed for break the 15th-18th of the month. CMI High will be traveling to New York City February 21st-23rd. There, they will attend services at Central Synagogue and I enjoy dinner at Sammy’s Romanian. We will be traveling to Ellis Island, visiting the Tenement Museum and much more. If you have not signed up yet and are an 8th-12th grader who is interested in attending, please email Michelle (mgoldstein@cmihamden.org).



NURSERY SCHOOL NEWS

Susan Witten Nason
Early Childhood Director

Happy 2020! Hard to believe it is a new year already. 2019 went by too quickly.

We wish you all a happy, healthy new year.

We are enjoying the cold, sometimes snowy weather, (at least those of us under the age of five...), but are also so glad we have such a cool indoor play space to hang out!


The children will be learning about Martin Luther King Jr. in January, and the adults look forward to the special MLK service on January 17th.

As we celebrate the new year, we will also get ready to celebrate Tu B’Shevat- the new year/birthday, of the trees, in February.

That always makes some of us hopeful that spring is around the corner!

Before we know it, Passover will be here.

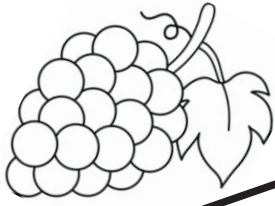
Happy New Year to all!



Mark P Altman MD
*Specializing in surgery of the hand, wrist, shoulder, and elbow
Orthopaedic fracture care*

203.408.2700
Offices in Hamden and Guilford

Tu B'Shevat



Unscramble these words connect to Tu B'Shevat

MOSOLBS
NEMOL
CARITOP
IGF

PPLA
GESRUEEHN
ENTUAR
TERE



Tu B'Shevat Wordsearch

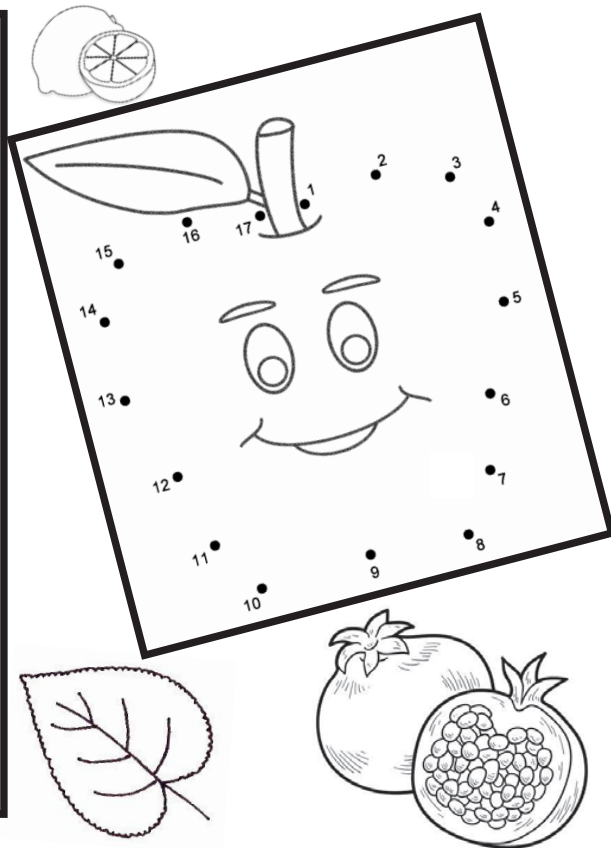
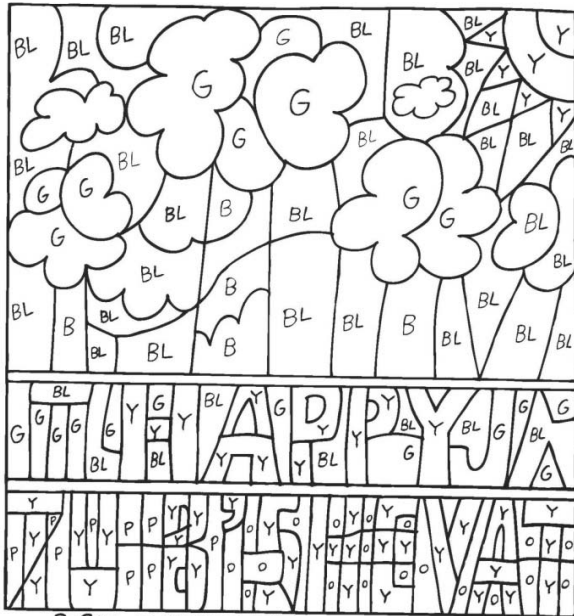
Many different kinds of trees grow in Israel. Find the trees listed below in the wordsearch. The words may be horizontal, vertical, diagonal, backwards or forwards. After you circle the words, the letters which are not used in any words will spell out a Tu B'Shevat message.

- ALMOND
- WILLOW
- APPLE
- TAMARISK
- APRICOT
- CAROB
- PALM
- CEDAR
- ORANGE
- CITRON
- OLIVE
- CYPRESS
- MYRTLE
- FIG
- LEMON
- FIR
- GRAPEFRUIT

C	T	U	B	S	H	N	O	R	T	I	C
E	C	Y	P	R	E	S	S	I	O	E	A
D	V	A	A	T	I	S	U	K	C	N	R
A	P	P	L	E	O	R	W	N	I	A	O
R	S	E	M	T	F	I	R	H	R	E	B
N	E	G	W	E	W	Y	N	E	P	A	R
O	R	N	P	D	N	O	M	L	A	T	H
E	B	A	I	R	M	E	L	T	R	Y	M
T	R	R	H	E	D	A	Y	L	O	F	T
G	H	O	L	I	V	E	E	G	I	F	T
R	T	A	M	A	R	I	S	K	E	W	E

Write the message with the leftover letters.

COLOR THE SPACES USING THE COLOR CODE BELOW AND SEE THE SPECIAL MESSAGE. LEAVE THE BLANK SPACES WHITE!



CANTOR'S NOTES *continued...*

Today, Mark is a world-renowned pianist, composer and music producer who has collaborated with the proverbial who's who of jazz, pop and rock: Aretha Franklin, Carole King, Phoebe Snow, Leslie Gore, Gladys Knight, Wycliff Gordon, Hugh Jackman, Burt Bacharach, Chita Rivera and many others. He has performed at Carnegie Hall, Radio City, the Blue Note, Birdland, the Rainbow Room, and Merkin Hall among other notable New York venues as well as internationally. A graduate of the Hartt School of Music, Berman has written and produced music for television and film including; Sex and the City (where he plays piano on the ubiquitous theme), Nurse Jackie, Royal Pains, The Bachelorette, Bates Motel and many others on NBC, CBS, ABC, Showtime, Comedy Central, HBO and OWN. Mark's original music has also been featured on radio at NPR and CRN International. Mark is also a powerful presence on Broadway, where he's conducted and played lead piano in Rent, Smokey Joe's Cafe, Bullets Over Broadway, The Boy from Oz, Hairspray, 42nd Street, Radio City, Aida, The Color Purple, Jesus Christ Superstar, Hair and Spider-Man. There will be more to this concert than meets the eye but if I gave away all the details that would spoil the anticipation, so put Saturday evening, April 25th, 2020 on your calendar and save the date!! Every year, inevitably someone comes up to me and tells me, "I heard how wonderful the Cantor's Concert was this year, I am very sad I missed it." Mark the date, change your plans, regret is never a good feeling. This is not just a concert, this is a fundraiser and the money we raise is needed, un-jokingly, to turn the lights on.

In case you haven't heard, CMI is in the midst of a serious financial crisis and we need your support now more than ever. The legacy and longevity of CMI is long and deep and we have an obligation to continue the important work of CMI for future generations. The social justice legacies of Rabbi Goldberg and Rabbi Brockman, the pulpit where Martin Luther King Jr preached, the amazing mosaic Ark and murals of the world renowned Jewish Artist Ben Shahn. Did you know Ben Shahn's works are held in the collections of the Art Institute of Chicago, the Whitney Museum of American Art in New York, the Tate Gallery in London, and the National Gallery of Art in Washington, D.C., among others and we have

his artistry right in front of us on our walls and bimah? Ben Shahn's works were inexorably tied to his pursuit of social justice and lifelong activism within leftist political beliefs. Is it any mistake that this great Jewish artist is inexorably connected to the very heart and soul of Mishkan Israel? Hardly; but we have the bigger challenge of never losing sight of what it means to continue the work of our forebears, to keep the legacy of CMI ever evolving. Rabbi Immerman has clearly and quickly picked up that torch and is running with it, so too does everyone need to rise to the occasion to continue this legacy. Come to our Cantor's Concert, Saturday evening, April 25, 2020, support CMI!

CONNECT WITH CMI ONLINE

Keep up-to-date with all CMI events. Check our website regularly at <http://cmihamden.org>. You will find announcements, upcoming events, calendar, worship service times and contact information. New members can join the congregation and everyone can register for religious school and nursery school, pay your bills and make contributions. And don't miss the slideshow of recent events – it changes frequently so check back often!



We have several e-newsletters to keep our congregational family informed of upcoming events, recent passings and school events. If you're not currently receiving our e-newsletters you can get on the distribution list.

CMI is on Facebook. Click the icon on our website or go to <http://www.facebook.com/cmihamden>. You'll want to "like" us.

CMI Religious School is on Facebook. Go to <https://www.facebook.com/cmireligiousschool> and "like" us. We would like to keep you up-to-date with all Religious School events.

JANUARY 2020

				1 New Years Day Office & School Closed	2 12:00 noon Mussar Lunch & Learn	3 5:30 p.m. Early Oneg 5:30 p.m. Tot Shabbat 6:00 p.m. Evening Service	4 9:00 a.m. Torah Study
5 9:00 a.m. Brotherhood Coffee Shop 9:30 a.m. Religious School 9:30 a.m. Kadima Shabbat Box Family Program 9:45 a.m. Intro to Reading Liturgical Hebrew 10:45 a.m. Judaism: New Interpretations of Old Ideas 12:00 noon- 4th & 5th Grade Youth Group 12:30 p.m. Confirmation	6	7 4:00 p.m. Religious School 7:00 p.m. Choir Rehearsal	8 12:15 p.m. Intermediate Hebrew 6:00 p.m. Executive Committee Meeting	9 12:00 noon Mussar Lunch & Learn	10 L'Taken Washington Trip 5:30 p.m. Early Oneg 6:00 p.m. 5th Grade Family Service & Birthday Blessings	11 L'Taken Washington Trip 9:00 a.m. Torah Study	
12 L'Taken Trip 9:00a.m. Brotherhood Coffee Shop 9:30 a.m. Religious School 9:30 a.m. 6th/7th Grade ADL Confronting Semitism Program 9:45 a.m. Intro to Reading Liturgical Hebrew 10:00 a.m. Brotherhood Book Club 10:45 a.m. Judaism: New Interpretations of Old Ideas	13 L'Taken Trip	14 4:00 p.m. Religious School 7:00 p.m. Choir Rehearsal	15 12:15 p.m. Intermediate Hebrew 7:00 p.m. Board Meeting	16	17 7:00 p.m. MLK Evening Service 8:30 p.m. Oneg	18 9:00 a.m. Torah Study 10:30 a.m. Kabbalah Study Group	
19 No Religious School or Activities	20 MINS Closed	21 4:00 p.m. Religious School 7:00 p.m. Choir Rehearsal	22 12:15 p.m. Intermediate Hebrew	23 12:00 noon Mussar Lunch & Learn	24 5:30 p.m. Early Oneg 6:00 p.m. Evening Service	25 9:00 a.m. Torah Study 10:30 a.m. Morning Service 12:00 p.m. Potluck Lunch 5:00 p.m. CMI Got Talent Event & Dinner	
26 9:30 a.m. Kol Shira Community Concert at The Towers 9:45 a.m. Intro to Reading Liturgical Hebrew 10:00 a.m. Chevre Hands 10:45 a.m. Judaism: New Interpretations of Old Ideas 12:00 Noon CMI High 12:00 Noon Life is Delicious	27	28 4:00 p.m. Religious School 7:00 p.m. Choir Rehearsal	29 12:15 p.m. Intermediate Hebrew 7:00 p.m. Ritual Committee Meeting	30 12:00 noon Mussar Lunch & Learn	31 5:30 p.m. Early Oneg 6:00 p.m. Evening Service		

JANUARY CALENDAR

FEBRUARY CALENDAR

FEBRUARY 2020

								1 9:00 a.m. Torah Study
2 9:00 a.m. Brotherhood Coffee Shop 9:45 a.m. Intro to Reading Liturgical Hebrew 10:00 a.m. Brotherhood Book Club (snow date) 10:45 a.m. Judaism: New Interpretations of Old Ideas 12:00 Noon 6th & 7th Grade Youth Group	3	4 4:00 p.m. Religious School 7:00 p.m. Choir Rehearsal	5 12:15 p.m. Intermediate Hebrew 7:00 p.m. Executive Committee Meeting	6 12:00 noon Mussar Lunch & Learn	7 5:30 p.m. Early Oneg 5:30 p.m. Tot Shabbat Service 6:00 p.m. Evening Service	8 9:00 a.m. Torah Study		
9 9:00 a.m. Brotherhood Coffee Shop 9:30 a.m. Religious School 9:30 a.m. Tot Program – Tu B'Shevat 9:45 a.m. Intro to Reading Liturgical Hebrew 10:00 a.m. Brotherhood Book Club 10:45 a.m. Judaism: New Interpretations of Old Ideas 11:00 a.m. Religious School Seder Tu B'Shevat 12:30 p.m. Confirmation	10	11 4:00 p.m. Religious School 7:00 p.m. Choir Rehearsal	12 12:15 p.m. Intermediate Hebrew	13 12:00 noon Mussar Lunch & Learn	14 5:30 p.m. Early Oneg 6:00 p.m. Family Service & Birthday Blessings	15 9:00 a.m. Torah Study 10:30 a.m. Morning Service 12:00 Noon Potluck Lunch		
16 No Religious School or Activities	17	18 No Religious School	19 12:15 p.m. Intermediate Hebrew 7:00 p.m. Board Meeting	20 12:00 noon Mussar Lunch & Learn	21 CMI High NYC Trip 5:30 p.m. Early Oneg 6:00 p.m. Evening Service	22 CMI High NYC Trip 9:00 a.m. Torah Study		
23 CMI High NYC Trip 9:00 a.m. Brotherhood Coffee Shop 9:30 a.m. Religious School 9:45 a.m. Intro to Reading Liturgical Hebrew 10:00 a.m. Chevre Hands 10:00 a.m. Brotherhood Book Club (snow date) 10:45 a.m. Judaism: New Interpretations of Old Ideas 11:30 a.m. CMI High 12:00 p.m. Life is Delicious	24	25 4:00 p.m. Religious School 7:00 p.m. Choir Rehearsal	26 12:15 p.m. Intermediate Hebrew	27 12:00 noon Mussar Lunch & Learn	28 7:00 p.m. Evening Service 8:00 p.m. Oneg	29 9:00 a.m. Torah Study 10:30 a.m. Morning Service 10:30 a.m. Kabbalah Group		

Kol Shira:
Celebrating Jewish Music in New Haven

Sunday, January 26
 10:00am - 11:30am
 -The Towers-
 18 Tower Ln
 New Haven, CT
 06519

Parents are invited to join and are responsible for transportation of their child(ren). Please arrive at 9:45am

CMI • 785 Ridge Road Hamden, CT 06517 • 203-288-3877 • www.cmihamden.org

TOT SHABBAT

January 3 & February 7
 5:30 PM

Join CMI staff members for this celebration of Shabbat with prayers, song and stories.

Tot Shabbats are designed for families with children age 6 years and under and are open to the community

CMI • 785 Ridge Road Hamden, CT 06517 • 203-288-3877 • www.cmihamden.org

FEBRUARY WORSHIP SERVICES & STUDY

SHABBAT BESHALACH

Ex. 13:17-17:16

Friday, February 7

- 5:30 p.m. Early Oneg
- 5:30 p.m. Tot Shabbat
- 6:00 p.m. Evening Service

Saturday, February 8

- 9:00 a.m. Torah Study

SHABBAT YITRO

Ex. 18:1-20:23

Friday, February 14

- 5:30 p.m. Early Oneg
- 6:00 p.m. Family Service & Birthday Blessings

Saturday, February 15

- 9:00 a.m. Torah Study
- 10:30 a.m. Morning Service

SHABBAT MISHPATIM

Ex. 21:1-24:18

Friday, February 21

- 5:30 p.m. Early Oneg
- 6:00 p.m. Evening Service

Saturday, February 22

- 9:00 a.m. Torah Study

SHABBAT TERUMAH

Ex. 25:1-27:19

Friday, February 28

- 7:00 p.m. Evening Service
- 8:00 p.m. Oneg

Saturday, February 29

- 9:00 a.m. Torah Study
- 10:30 a.m. Morning Service
- 10:30 a.m. Kabbalah Study Group

“...who donates much to charity becomes the richer for it...”

Zohar iii 110b

OCTOBER 1, 2019– DECEMBER 1, 2019

ENDOWMENT FUNDS: (invested to generate annual income for specific purposes)

General Fund

Howard Lurie	In Memory of
Howard Lurie	ROSE ALTSCHULER HOZER
	ABRAHAM SHIFFRIN

Jay Bovilsky Scholarship Fund (RS)

Ronni Knapp	In Memory of
	JULIA LAFRANTZ

Cemetery Fund

Peter & Saralee Black	In Memory of
	EVA BLACK

Robert Goldberg Peace & Justice Fund

Larry & Betsy Rosenthal

Richard Ruth & Jim North	In Memory of
Bert & Martha Weisbart	ROBERT RUTH
	IRVING WEISBART

Isidor E. Offenbach Musical Service Fund

Ruth Koizim	In Memory of
	LUCIE M. DALE

TARGET AREAS: (meant for immediate use of funds)

Karen Baar
Phillip & Louise Danishevsky
Robert & Tamara Epstein
Susan Fishbein
Sarah B. Greenblatt
Priscilla Jencks
Len & Ellen Milstone

General

Jonathan & Stephanie Alderman	In Appreciation of
Herb & Elin Brockman	CMI PROFESSIONAL STAFF
Herb & Elin Brockman	MERAV CANAAN
	SARAH GREENBLATT
	In Memory of
Betsy Barnston	NELSON HAHN
David & Ruthann Beckerman	SYLVIA BECKERMAN
David & Ruthann Beckerman	WILLIAM BECKERMAN
Anita Beloff	NORMA FIRTEL
Marian Dobbs	CARYL ANDERSON on her birthday
Bob & Tamara Epstein	SANTO VITALE
Sarah B. Greenblatt	PHILIP DICKS
Sarah B. Greenblatt	BRUIN T. LIPMAN
Sarah B. Greenblatt	I. ALBERT LIPMAN
Mark & Arlene Grubert	MARILYN UNGER
Judith Hahn	DR. RICHARD SHELLING
The Hellerman Family	MARILUZ MERMELSTEIN ADAMS
The Lewis Family	HERBERT LEWIS
The Lewis Family	VIVIAN LEWIS
Philip & Sondra Lublin	FRANCES GORDON
Larry Schaefer & Lina Lawall	FANNIE DRABKIN
Larry Schaefer & Lina Lawall	MICHAEL SCHAEFER
Larry Schaefer & Lina Lawall	SARAH SCHAEFER
Judith Schwartz	A. HERBERT SCHWARTZ
Joan Wexler	HARRY WEXLER
Dr. Sydney Zudekoff	DAVID PAUL ZUDEKOFF

Adult Ed./Seniors

Rona Garbowit	In Memory of
Rona Garbowit	DAVID EHRlich
	FAY EHRlich

Building

Judy & Chuck Naden
Judy & Chuck Naden
Robert & Susan Nobleman

In Memory of
JACK KAPLAN
CANTOR BERTRAM NADEN
ARNOLD BALTIMORE

Cemetery

Kenneth Landorf

In Memory of
CAROLYN LANDORF

Hunger

Cindy Kissin & John Jacobson
Norman Rashba
Norman Rashba

In Memory of
WILLIAM STECKERL
HARRY GOLDBERG
ABE RASHBA

Music

Julie & David Chevan

Susan Mazonson & Edward Matluck
Michael, Ellen, Seth, Lily
Rosenthal & Diane Purvin
Jim & Cis Serling

In Memory of
FRED STEVEN LANDORF
NATHAN ROSENTHAL
BARBARA SUSMAN

Nursery School

The Germaine Family

In Memory of
STANLEY SWIMMER

Religious School

John Keegan & Dana Brozinsky
The Sorochan Family
The Sorochan Family
The Sorochan Family

In Memory of
CHARLES D. KEEGAN
BELLA AVERBUCH
MEYER BEN YA'AKOV AVERBUCH
TZ'VI HERSH BEN AVRAHAM HANINA

Religious School Scholarship

Rona Garbowit
Rona Garbowit

In Memory of
DAVID EHRlich
FAY EHRlich

SPECIAL FUNDS:

Herbert N. Brockman Rabbinic Endowment Fund

William Goldberg	In Appreciation of
	MERAV CANAAN
	In Memory of
Ruth Koizim	MAX GOLDFARB
Ruth Koizim	JEAN KAHN
Sanford & Carol Schreiber	MIRIAM LEE TROPP

Rabbi Immerman's Discretionary Fund

Dr. Carl M Cassin	In Memory of
Jane Farrington	DOROTHY CASSIN
Jane Farrington	MICHAEL SCHAEFER
Marlene & Neil Greenberg	SARA SCHAEFER
Joan Lipin	ELEANOR JACOBS
Linda Proscio	BERNARD LIPIN, my husband
	ROBERT GOLDBERG

2019-2020 CHAI APPEAL

It is with immense gratitude that we acknowledge those families who as of this publication have responded to the menu of additional giving opportunities with a commitment above their standard dues and to the holiday appeal.

Our Pacesetters:

Michael Allen & Eun-Mi Shim**
Michael Dimenstein & Hedda Rubenstein
Andrew & Eileen Eder
Sonja Goldstein
Sarah B. Greenblatt
Judith Hahn**
Adam Hittelman & Michelle Serlin**
John & Susan Hoffmann
James Horwitz & Sandra Allison**
Ruth Koizim
J. Lance Lichtor
Jerome & Roslyn Meyer**
Larry Schaefer & Lina Lawall
Louis Scheps
Mark & Judith Sklarz
Andrew Wingate & Tanya Bilchik

*Double Chai

**Torah Circle

Additional Gifts:

Jason & Suzanne Alderman, The Astmann Family, Betsy Barnston, Laura Baum, Larry & Phyllis Bausher, Irwin Braverman, Stuart & Hedy Bush, Alice Baxter, Matthew & Michele Cohen, Jacob & Nedra Crane, Dr. Neil & Marlene Greenberg, Robert Homer, Irwin & Hilda Horowitz, Alvin Klevorick & Susan Bender, Joel & Cindy Kramer, Joan Lipin, David & Susan Millen, Jeffrey Smith & Edith Rotkopf, Jerome & Cecelia Serling, Michael & Gale Silverberg, Rabbi Hesch Sommer & Dr. Linda Waldman, Marc Wallman & Cynthia Carr, Bert & Martha Weisbart

THE SMOKO AGENCY
Insurance

2661 WHITNEY AVENUE
HAMDEN, CONNECTICUT 06518

RONALD L. SMOKO, JR.
ACCOUNT EXECUTIVE

(203) 281-6576
FAX (203) 248-5162

LIFE IS DELICIOUS

Life is Delicious gets together one Sunday each month to cook for Columbus House regular shelter. Congregants and their children are invited to join in the fun and help with the cooking.



We will be back in the kitchen to cook for Columbus House's overflow shelter.

**Sunday, January 26 &
Sunday, February 23
12:00 noon**

If you'd like to help shop, set-up, cook or clean for this session, contact Aaron at aaron.singer@thehartford.com

Slots fill up quickly



CMI • 785 Ridge Road Hamden, CT 06517 • 203-288-3877 • www.cmihamden.org

COLLECTIONS

The Social Action Committee continues its ongoing collection of non-perishable foods for the food pantry at Christian Community Action. Please bring non-perishable goods to the collection bin in the rotunda. CCA requests that food be brought in sturdy bags or be double-bagged and prefers no glass containers. If you have any questions, contact Rick Molot (richard.molot2@usdoj.gov).

The Committee also collects clothes for Immanuel Baptist Church's "Clothes Closet," which provides items at no charge to those in need. Gently used winter clothing and coats for children and adults are appreciated at this time of year. The clothing bin is located inside the CMI coatroom. For more information, contact Sarah at sbg4750@aol.com.

TO OUR READERS

If you use a service from one of our advertisers, please inform them that you are doing so because you saw their ad in the Bulletin.

If you would like to place an ad in the Bulletin, Contact Sarah at **(203) 288-3877**.

MORE NEWS TO USE

ADULT EDUCATION

Kabbalah & Judaism

Stanley Friedman will be leading discussion sessions that explore topics of interest in Kabbalah and Judaism. The sessions will be held in the Congregation Mishkan Israel lounge from 10:30 AM to noon, on selected Saturday mornings. No prerequisites required – only intellectual curiosity. For questions or to be added to the email list, contact Dr. Friedman at: stanf24@hotmail.com.

Class will meet the following dates:

- January 18, 2020:** Dreams in Kabbalah
- February 29, 2020:** Heaven
- March 28, 2020:** Reincarnation/Soul
- May 2, 2020:** Nature of Evil
- May 30, 2020:** Kabbalistic Astrology
- June 13, 2020:** "Work" of the Kabbalist

Shabbat Morning Torah Study

Classes meet every Saturday morning at 9:00 a.m. with Rabbi Immerman.

Introduction to Reading Liturgical Hebrew

Liturgical Hebrew is taught by Rabbi Steinberg and meets Sunday mornings from 9:45 - 10:30 a.m.

Judaism: New Interpretations of Old Ideas

Class with Rabbi Steinberg meets Sunday mornings from 10:45 a.m.-12:00 p.m. New participants are always welcome

Mussar Lunch and Learn - Thursdays at Noon

Thursday, December 5
Through the practice of mussar (moral conduct) we will learn how to achieve balance in our lives through Jewish values. We will study and explore mussar texts including Everyday Holiness by Alan Morinis. . Bring your lunch and meet in the Library. Please sign up by emailing Sarah Legassey at slegassey@cmihamden.org.

Intermediate Biblical Hebrew Study Group

Meeting on Wednesday afternoons, 12:15 - 1:00 p.m., the group studies biblical Hebrew vocabulary and grammar with a focus on a direct translation of Genesis.

KABBALAH

STUDY GROUP

Saturday • 10:30 AM – 12:00 Noon
Date: January 19 & February 18

Do you have a new ^{אדם}ad without dates?

Congregation Mishkan Israel is offering an adult education & discussion series about Jewish Mysticism presented by Dr. Stan Friedman.

No prior knowledge is required. The series is free and open to the community.

Contact Stanley Friedman to RSVP or for more information at stanf24@hotmail.com

CMI • 785 Ridge Road Hamden, CT 06517 • 203-288-3877 • www.cmihamden.org

RITUAL COMMITTEE NEWS

Shabbat Morning Services

Shabbat morning has always been an important time to gather as a community for joyful prayer, study and to read Torah. In addition to the 9am Torah study, we will have Shabbat morning services at 10am when there is no Bar/Bat Mitzvah. These lay-led services offer an informal setting to pray, build community, and learn more about the Shabbat prayers. For many in our community who do not drive at night, they also an opportunity to celebrate Shabbat here at CMI. We hope that you will join us, consider leading, and help make a minyan.



BROTHERHOOD COFFEE SHOP OPENS

The Coffee Shop is in full operation
9:00 a.m. – 12:00 noon
Every Sunday of Religious School

January 3

Jeffrey Abrams
 Simon Arovas *
 Frances Belman
 Ann Berland
 Barnett Berman
 Joel Bolsky
 Eve Bovilsky
 Adeline Buxbaum *
 Annette Cohen
 Joseph Cohen *
 Joseph Cohn
 Anna Eisenberg
 Asna Finkelstein
 William Glass
 Diana Grafman
 Donald Henry Grinder *
 Isabelle Lurier Hahn *
 Adrian Hirschhorn
 Esther Hubelbank
 Minna Kleeberg *
 Rose Kryger
 Zelman Evans Leshine
 Clara D. Levin *
 Sybella Ruth Maskel *
 Julius Moore
 Forester Newick
 Rosaline Klein Passell *
 Minnie Perlman
 Joseph Rattner
 Irene Links Ray *
 Susan E. Rosen *
 Dorothy Rosenberg
 Miriam Hamerman Rudnick *
 Jeannette Schycon *
 Louis Eli Shapiro *
 Pauline Smolinsky
 Martha Solnit
 Kate Gootenberg Starin *
 Yetta Steinklein *
 Marvin Stone
 Flora Switko
 Martin Stuart Weisbart *
 Herbert E. Yudkin
 Annette G. Zelson *

January 10

Irene C. Adams *
 Harold S. Appell *
 Avraham ben Ya'akov
 Josef Averbuch
 Dr. Arnold M. Baskin *
 Louis Bender
 Sidney M. Brown *
 Evelyn W. Brownstein *
 Abraham Buxbaum *
 Sarah Prince Cheskis
 Jane C. Cohen
 Steven M. Drozd
 Babette B. Epstein *
 Albert Evans
 William H. Fenn *
 Herman Frankenberger
 Fannie Frankenberger
 Nathan B. Frankenberger
 Myron L. Gordon
 Willard Greenwald
 Alfred E. Gross *
 Abe Harris
 Charles Hellwig
 Dr. Aaron R. Hertz *
 Robert K. Hertz *
 Pauline Hilcoff
 Abraham Hubelbank
 Albert "Johnson Sr."
 James D. Kauffman *
 Eleanor Kaye
 Harry L. Kirsch *
 Regina Wendel Kleiner *
 Anna Kruger
 Millie Land
 Lillian L. Langrock *
 James Edward Levy *
 George S. Linde *
 Hilda Lipsher *
 Mark Walter Neitlich
 Mary O'Brasky *
 Isidor E. Offenbach *
 Edna S. Oppen *
 Edward L. Ritch *
 Nathan G. Sachs *
 Leah P. Sachs
 Dorothy Sands
 Blanche T. Shafer *
 Sylvia Shustak
 Lloyd Silverman
 Herbert Siperstein
 Sadie Kurtz Snider *
 Joseph Soffer
 Bella bat Moshe Sorochan
 Gladys Stenger
 Jacob Strauss *
 Joseph Tandler
 Edward Daniel Wallack *
 Bertha Weil *
 Rachel Zanker

January 17

Max Adler *
 Clifford Altschuler *
 Miriam Astmann
 Jeffrey Hirsch Cohen
 Gladys E. Collins
 Harold Fishbone
 Saul R. Friedler *
 Yetta Gittler
 Pauline Glass
 Robert Gold
 Hattie H. Goldbaum *
 David W. Goldberg *
 Harry Goldblum
 Elaine Goldman
 Elizabeth Goldsmith
 David M. Goodman *
 Sophie Stinow Goodman *
 Louis Greenberg
 Nathan H. Hamerman *
 Philip J. Harrison *
 Jean Lachman Howard
 Robert E. Hyman *
 Lisa Shanbrom Keane
 Linda L. Klebanoff *
 Sylvia S. Korn *
 Morris Korzenowitz
 H. David Kushlan *
 Louis Lapidus *
 Mary Levine
 Frank B. Levine *
 Charles Lipin
 Alan Massey
 Deborah Mermelstein
 Drew Ryan Merriam *
 Benjamin Milles *
 Walter Bernard Moscovitz
 Vivienne Nemerson
 Bennett S. Olins *
 Abraham Ominsky
 Theresa Lillian Phillips
 Lillian M. Rubin
 Hattie Schwartzman *
 Jeanette Serling *
 Dr. Arnold H. Serow *
 Flora P. Silvernail
 Nathan Siperstein
 Irving Steiglitz *
 Rose Stein *
 Cele Sweedler
 Ruth Lipton Swirsky
 David R. Tiven
 Dr. Joseph Weiner
 Irving Weisbart *
 Ida Levine Yudkin

January 24

Nancy Ackerbaum *
 Siegmund Adler *
 Essie Barest
 Howard Beckerman
 Samuel Bell
 Josephine Feinberg Bruno *
 Bessie Feldman Bruskin
 Annie Cohen
 Rose Eisner *
 Irving Enson
 Lillian Gerrol Farber
 Milton Feinstein *
 Michael Franford
 William Gitlitz *
 George Goldman
 Monroe S. Gordon
 Dorothy Katz Greenblatt
 Sonia Grossman
 Lillian Hall
 Rose Hershenson
 Dorothy (Dolly) Hyman Hertz *
 William Horowitz
 Herbert Kabatznick *
 Helen Bretzfelder Kleiner *
 Lillian (Bunni) Korman *
 Joseph Ullman Labov
 Florence S. Levine *
 Edward H. Levy *
 Mary B. Linde *
 Ella S. Loeb *
 Hyman Lurie
 Clifford M Masheb *
 Daniel A. Mendoza *
 David Meyers *
 Edith Stein Meyers *
 Michael Milander *
 Lee Perlman
 Nathan Rattner
 Dr. Seymour Rosenblatt
 Arthur J. Rosenbluth *
 Sheldon Samuels *
 Samuel Schwartz *
 Miriam Shapiro
 Barbara Silverstone
 Judith Siperstein
 Arnold Unger *
 Carl Walman *
 Leonor L. Wexler
 Steve Zielinski

January 31

Robert Cyril Ackerberg
 Janice Ackerman
 S. Bennett Alderman *
 Howard M. Barach *
 Bennett Blech
 Rabbi Harold Brockman
 Muriel Carberry
 Lillian Chaprack
 Anna Elfman Cohen *
 Rose Danzinger
 Hyman Dimenstein
 Dao Kim Phung Dinhvanminh *
 Irene Pines Finke
 Thomas Flynn
 Ellinor Jill Fox
 Herschel ben Velvel Gingis
 David Glass
 Helen Katz Goodkind
 Melvin Green
 Joseph Handleman *
 Mr. Seymour J. Hatkin
 Albert Hoffman *
 Rose Starin Hyman *
 Nahman J. Jacobs
 Jerome Jason
 Jennie Fishman Kaufman *
 Florence Knopp
 Harry Korman
 Irene Lehman *
 Jane Johnson Livingston *
 Martin Lowlicht *
 Sidney Margolis
 Mary Jane McDonald
 Estelle Meyer
 Dr. J. Haskell Milstone *
 Sarah Naden
 Pauline Newman *
 Mildred Olgin
 Adrian Ostfeld *
 George Paley
 David M. Popowich
 Grace Zeidenberg Postman
 Isidor Premark
 Harold Rosenberg
 Helen Hydeman Ross *
 Maxwell Rubenstein
 M. Wallace Rubin *
 A. Herbert Schwartz
 Louis Shure *
 Harry Silver
 Samuel Simons
 Ida Shoninger Sonnenberg *
 Louis Sturtz
 Dr. Paul Teiger
 Murray Tuckell *
 Rebecca Tuckell
 Paul Turner
 Marshall Richard Weiner

February 7

Louis Adams
 Florence Opper Alderman *
 Valerie Allen
 Jennie Arovas *
 Milton B. Baker
 Jack I. Baser *
 Louis I. Berdon
 Louise Buxbaum *
 Henry Kleiner Cahn
 Murray Cohen
 Sidney Cohen
 Charles Eisenberg
 Max Evans
 Betty Fleischner *
 Pauline Freed *
 Rose Gingold *
 Walter Fuld Gips
 Israel Goldstein *
 Israel "Babe" Gordon
 Leo Jacob Gordon
 Bessie Handleman *
 Sylvia Sheftel Hecht *
 Minna B. Hoffman *
 Emily Kohn Isaacs *
 Elsa Klahr
 Hyman Land
 Anna K. Lapidés *
 Morris Levine
 Sally Levine
 Godel Ominsky
 Caroline Oster
 William S. Richman *
 Harry Rittner
 Kenneth Rocklin
 Morris Roseman *
 Douglas Sandlaufer
 Sam Seif
 Theresa Silver
 Joseph Smolinsky
 Delores "Dubby" Spivack
 Addie Stinow *
 Dr. Maurice J. Strauss *
 Elsie Stromfeld
 Lena Sturtz
 Jules Sturtz
 Louis Vener
 Isadore L. Wexler
 Gertrude Baumgartl Wolf *
 Sarah Zuckerman

February 14

Bessie Adler
 Stanley Back
 Inge Battige
 Sylvia Bernstein
 Hyman Bostin *
 Eva Brody
 David Caesar *
 Henrietta B. Cahn *
 Herman Robert Cherman *
 Abraham Cohen
 Jacob Cooperman *
 Samuel Dryfus *
 Ben Eager
 Jack H. Evans
 Sonya Gale
 Malka Gingis
 Walter Fuld "Gips Jr."
 Molly Gold
 Anita Goldberg
 Dorothy Eleanor Greenhouse *
 Norman Greenstein *
 Dennis Grove
 Joyce Hirschhorn
 Zelda Hoffman
 Mervin Jacobson
 Ann Schpero Kaplan
 Celia Kassow
 Jacob Kassow
 Benjamin B. Kauffman *
 Mrs. Doris G Kaufman
 Dr. Harry E Klebanoff *
 Julius Kraft
 Ruth Lapidés *
 Robert Lebson
 Roger C. Lehman
 Robert Maisel *
 Bertha Milander *
 Hyman Montlick *
 Yale Roy Nemerson
 Ellinor G. Newman
 Sam Nobleman
 Max Jordan Rand *
 Evelyn Rosenblum
 Gerald Rozen
 Jacob Rubin
 Hernan Saavedra
 Dr. Bernard Schneider
 Rose Fuchs Shernow *
 Pearl Shindler
 Abraham Skolnick
 Emma M. Sonnenberg *
 Alex Sterling
 Alan Tiven
 Louis Weiss
 Israel Willensky
 Gerald Wyndorf
 Marisa Yudkin


February 21

Harry Astmann
 Edward S. Beck *
 Sylvia Bernstein
 Bertha Blech
 Jacob Blech
 Myron Blumenthal *
 Theodore Bovilsky
 Sadie Cohen
 Ida R. Cohen *
 Arthur Eder
 Harry Evans
 Clara Field
 Ernest I. Frankenberger
 Herman Fribush
 Elaine Greenblatt Gladstein
 Flora Goldstein
 Jennie H. Gompertz *
 Louis Michael Gompertz *
 William Wolf Goodman
 Emanuel H. Gratenstein *
 Tevye-Rasia Hanina
 Esther Hershman *
 Emily Heller Herz *
 LeRoy Homer
 Isadore Jacobson
 Milton Kirsch
 Belle Krall
 Jennie Doroff Lavietes *
 Harry Levine *
 Mr. Herbert S. Levinson
 Joseph E. Levy *
 Dr. Bernard Lipman
 Veronica Loewenbaum
 Charles H. Marks *
 Hinda Massey
 Barbara Fast Mezoﬀ
 Myron Puklin *
 Howard Roseman
 Cecelia Rosenberg *
 Gertrude Rosenthal
 Paul Stephen Rosenthal
 Irwin Sack
 Robert H. Saltzer *
 Norma Abeshouse Schaefer
 Herbert Schaffer
 Anna Schreiber
 Joan H. Schwarzkopf *
 Fanny Shoninger *
 Frances Shartenberg Shure *
 Burton Tenner
 Augusta Thomas *
 Hugo Weiss *
 Dorothy Zundell

February 28


Babetta Adler *
 Herbert Baltimore *
 Cheryl Ann Campbell
 Sherwin Casher
 Hilda Delson
 Louis J. Fox
 Gerald Gale
 Shirley Glooskin
 Marvin Chaucer Gold *
 Samuel Goodman *
 Sophie Wilensky Green *
 Bertha Grove
 Dr. J.M. (Julius) Harrison *
 Bertha Herz *
 Gussie Hoffer Insler *
 Mildred Kirsch *
 Jeannette B. Kruger *
 Arnold Lawall
 Eziel Lederman
 Hershey Marcus
 Morris Marqusee *
 Clara Menzel
 Frederick A. Merliss *
 Zelda Moss
 Samuel Olanik
 Samuel M. Opper *
 Mollie Opperman
 Max L. Osterweis *
 Rollin G. Osterweis
 Jack Post *
 Marc David Rosenberg
 Jean Rothbaum
 Dorothy Seif
 Harry Seltzer
 Melvin Silverman
 Eva Sugenheimer *
 Gershon Tziferman
 Helen Ullman *
 Maurice Vener
 Hannah Stodel Weiner *
 Jacob Abraham Weiner *
 Samuel Zakar
 Gertrude Zwickler

Larry Lazaroff **Arnold's Jewelers**
The North Haven Diamond Center



117 Washington Avenue
North Haven Shopping Center
North Haven, CT 06473

Phone: (203) 239-4291
Fax: (203) 230-8138
Email: laztwo@aol.com
Web: TheArnoldsjewelers.com



Ear Nose and Throat
Specialists of Connecticut

David I. Astrachan, M.D.
Craig S. Hecht, M.D.

David I. Astrachan, M.D.
Ear, Nose and Throat Medicine • Head and Neck Surgery

Phone 203.248.8409
Fax 203.281.2905
www.entct.com

MONUMENTS ERECTED IN ALL CEMETERIES

NOLAN'S
HAMDEN MONUMENT COMPANY
LICHTENSTEIN COMPANY

323 WASHINGTON AVE., HAMDEN, CT 06518
(203) 288-8486 • (203) 287-1593
CT Toll Free Only (800) 852-8865 • Fax (203) 287-1593

JOHN R. NOLAN
MIACHAEL F. NOLAN nolanmonuments@att.net

Celebrating
Our 50th Anniversary!



TOWER ONE • TOWER EAST
An Active Senior Living Community

Contact Rebecca Goodman Olshansky
(203) 772-1816, ext. 250 rebecca@towerone.org
www.towerone.org

Weller Funeral Home

The oldest Jewish family funeral home serving the Jewish community of greater New Haven with dignity since 1881

Danny Weller Klein

Fourth generation funeral director at Weller Funeral Home

424 Elm Street, New Haven, CT 06511
(203) 624-6912 www.wellerfuneralhome.com



ROBERT E. SHURE, INC.

— FUNERAL HOME —

Dedicated to the Dignity and Respect of Tradition.

543 George Street, New Haven, CT 06511

Robert E. Shure
Founder

203-562-8244
shurefuneralhome.com

James M. Shure
President

Building a Strong Future for the Next Generation



Ask us about establishing a fund, trust
or annuity to ensure CMI's Future.



Jewish Foundation
OF GREATER NEW HAVEN



newhavenjewishfoundation.org

THE HAMDEN HALL EXPERIENCE CREATING ENDLESS OPPORTUNITIES FOR OUR STUDENTS



View Class in Session at our
Morning Coffee and Campus Tours:

Thursday, Jan. 23 / 9-10:30 a.m.

Thursday, Feb. 20 / 9-10:30 a.m.

Or call 203.752.2610 to schedule a private tour.



HAMDEN HALL COUNTRY DAY SCHOOL

Educating students in PreSchool through Grade 12
1108 WHITNEY AVE. HAMDEN, CT. 203.752.2610
WWW.HAMDENHALL.ORG TRANSPORTATION AVAILABLE

JOIN CMI'S CONFIRMATION CLASS



STARTING JANUARY 5 • 12 NOON

Calling all 10th graders! Confirmation class will begin on Sunday, January 5 with Rabbi Immerman. Please join him for the first meeting to see what confirmation is going to be all about! For more information and to sign up, contact the school office .

CMI • 785 Ridge Road Hamden, CT 06517 • 203-288-3877 • www.cmihamden.org

Chevra Hands



Sunday, January 26 &
Sunday, February 23

10:00 am

ALL
WELCOME

Join us as we make quilts for the elderly and baby blankets for our newest congregants

For more information, contact
Sue at (203) 288-9797 or
smillen179@sbcglobal.net



CMI • 785 Ridge Road Hamden, CT 06517 • 203-288-3877 • www.cmihamden.org



CMI TOT PROGRAM

ALL ABOUT TU'SHEVAT

Sunday, February 9 • 9:30-12:00 noon

Join our Preschool and Kadima teachers. Listen to stories, sing with Elise, and create a special craft project around the Jewish year.

Tot Programs are designed for CMI families with children age 5 years and under. Crafts will be geared for students ages 2-5. Younger children can participate in a playgroup in the Pre-K classroom. All programs are free. Snack is provided.

CMI • 785 Ridge Road Hamden, CT 06517 • 203-288-3877 • www.cmihamden.org

Happy Birthday

Celebrate your birthday at
Family Service.

January 10, 2020

6:00 p.m.

&

February 14, 2020

6:00 p.m.

If your child will be attending
Service in their birthday month,
please call Tamara
203-288-3877 or email:
tepstein@cmihamden.org

CMI • 785 Ridge Road Hamden, CT 06517 • 203-288-3877 • www.cmihamden.org

The Congregation Mishkan Israel
785 Ridge Road
Hamden, CT 06517

Next Bulletin Deadline 1/1/19

Time Value Data
Deliver No Later than January 1

Non Profit Org
US POSTAGE
PAID
Permit #156
New Haven, CT

THE CONGREGATION MISHKAN ISRAEL BULLETIN

JAnuary/February 2020 Series 104 #3

Published monthly except July and August

THE CONGREGATION MISHKAN ISRAEL

785 Ridge Road Hamden CT 06517

Phone: (203) 288-3877 Fax: (203) 248-2148

<http://cmihamden.org>

Rabbi Brian P. Immerman x236

rabbi@cmihamden.org

Rabbi Emeritus Herbert N. Brockman, Ph.D. D.D. x243

cmirabbi@cmihamden.org

Cantor Arthur Giglio x244

cantorg@cmihamden.org

Merav Canaan, Temple Administrator x241

mcanaan@cmihamden.org

Michelle Goldstein, Religious School Director x237

mgoldstein@cmihamden.org

Alex Forte, Director of Youth Activities

mityor@cmihamden.org

Susan Witten Nason, Early Childhood Director x245

sperry@cmihamden.org

Sarah B. Greenblatt, President

president@cmihamden.org

JANUARY WORSHIP SERVICES & STUDY

SHABBAT VAYIGASH

Gen. 44:18-47:27

Friday, January 3

5:30 p.m. Early Oneg

5:30 p.m. Tot Shabbat

6:00 p.m. Evening Service

Saturday, January 4

9:00 a.m. Torah Study

SHABBAT VAYECHI

Gen. 47:28-50:26

Friday, January 10

5:30 p.m. Early Oneg

6:00 p.m. Family Service &
Birthday Blessing

Saturday, January 11

9:00 a.m. Torah Study

SHABBAT SHEMOT

Ex. 1:1-6:1

Friday, January 17

7:00 p.m. MLK Interfaith Service

8:30 p.m. Oneg

Saturday, January 18

9:00 a.m. Torah Study

10:30 a.m. Kabbalah Study Group

SHABBAT VAERA

Ex. 6:2-9:24

Friday, January 24

5:30 p.m. Early Oneg

6:00 p.m. Evening Service

Saturday, January 25

9:00 a.m. Torah Study

10:30 a.m. Morning Service

SHABBAT BO

Ex. 20:1-13:16

Friday, January 31

5:30 p.m. Early Oneg

6:00 p.m. Evening Service

Saturday, February 1

9:00 a.m. Torah Study

Service times are subject to change. For the most up-to-date information and to hear sample tunes from services, go to <http://cmihamden.org/worship>.