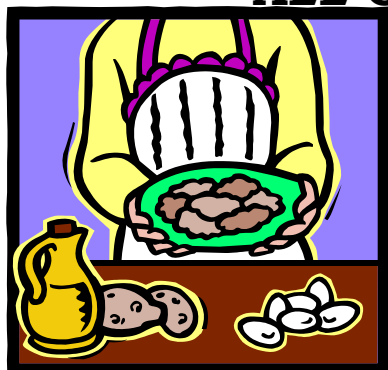


# CHANUKAH BEGINS **DECEMBER 2<sup>nd</sup>!!!**

## TIME FOR OUR ANNUAL CHANUKAH LATKE SALE!

**A FUNDRAISER FOR THE RELIGIOUS SCHOOL AND NO  
MUSS - NO FUSS FROZEN, EASY TO SERVE LATKES FOR  
ALL OF YOUR HOLIDAY CELEBRATIONS!!**



24 LATKES/BOX

\$15/BOX \$25/TWO BOXES

ALL ORDERS ARE DUE

**NOVEMBER 18<sup>th</sup>**

*Consider ordering a box to donate to the Religious School Chanukah celebration! Indicate number for donation on the form below.*

LATKES MUST BE PICKED UP ON SUNDAY, **DECEMBER 2<sup>nd</sup>**  
from 9:30 a.m. to 12:00 noon (in the kitchen)

Plan a visit to the Mitzvah Mall when you pick up your latkes!!!

---

Make checks payable to "CMI": Please mail this stub with your check to:  
CMI • 785 Ridge Road • Hamden, CT 06517

Name: \_\_\_\_\_

Phone Number: \_\_\_\_\_

Number of boxes ordered for our family: \_\_\_\_\_

Number of boxes for school donation: \_\_\_\_\_

Total number of boxes ordered \_\_\_\_\_ Total amount enclosed: \$ \_\_\_\_\_

*Thank you for your order!!! Happy Chanukah!*